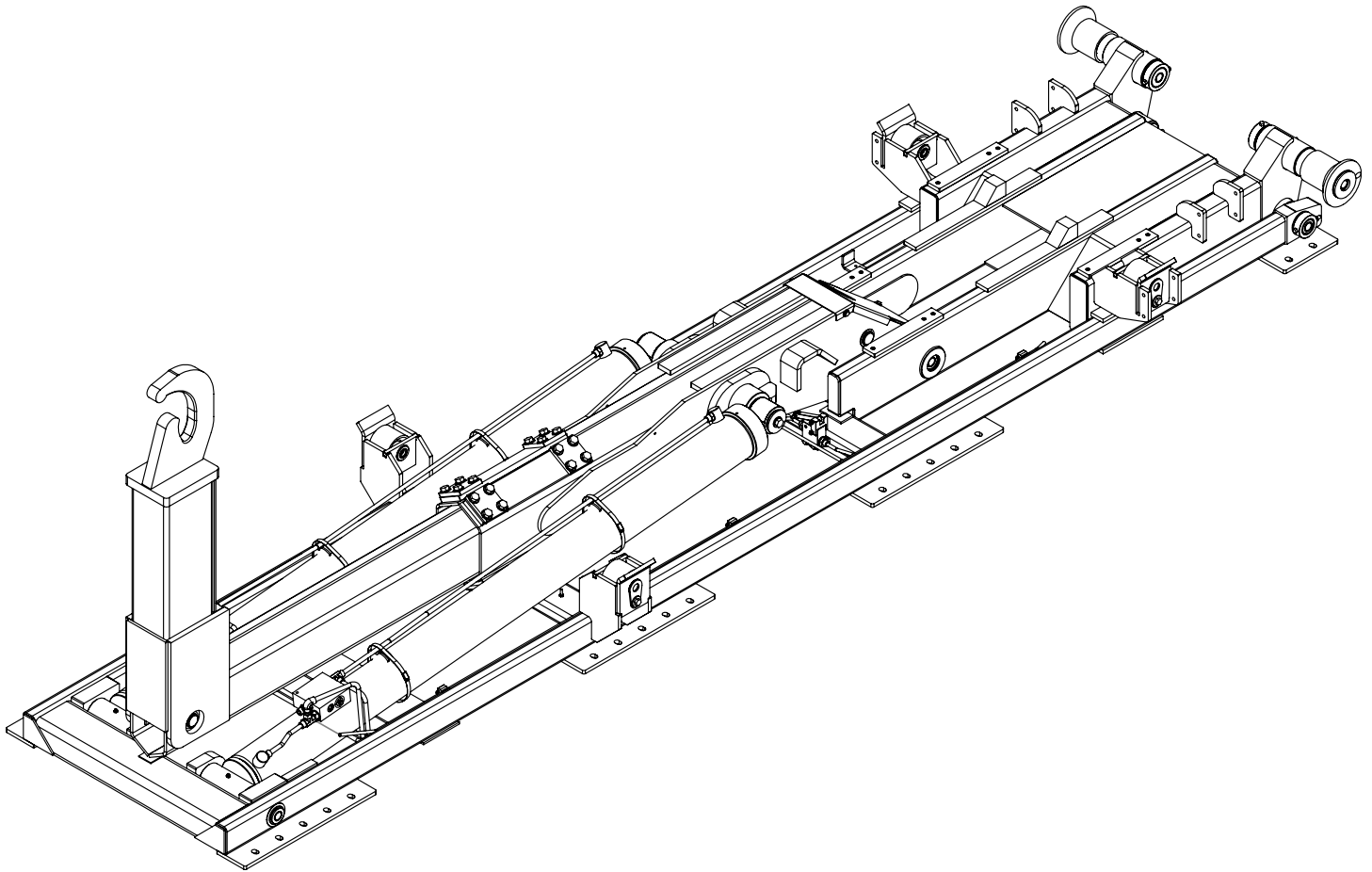




# Slider26 Hooklift Owner's Manual

Installation • Assembly Drawings • Parts



**Stellar Industries, Inc.**

**190 State Street**

**PO Box 169**

**Garner, IA 50438**

**800-321-3741**

**Fax: 641-923-2811**

**[www.stellarindustries.com](http://www.stellarindustries.com)**

Subject to Change without Notification.  
© 2016 Stellar Industries, Inc.

Last Revision: 11/04/16

# Slider Hooklift Manual Revisions

Date of Revision	Section Revised	Description of Revision
July 30th, 2010	Chapter 6 - Assembly Drawings	Updated Secondary Assembly to reflect engineering changes

# Table of Contents

---

Introduction.....	iv
Serial Tag Location .....	v
<b>Chapter 1 - Specifications.....</b>	<b>1</b>
Slider26 Specifications.....	1
Slider26 Latch Locations for Skid Compatibility .....	2
Slider26 Grease Zerk Locations .....	2
<b>Chapter 2 - Installation .....</b>	<b>3</b>
General Installation .....	3
Installer Notice .....	3
Torque Data Chart .....	4
Installation Note.....	5
Step 1: Set the hooklift onto the truck frame. ....	5
Step 2: Drill mounting holes. ....	5
Step 3: Install bumper.....	6
Step 4: Install tie-downs.....	6
Step 5: Install tarper tower (If applicable). ....	6
Step 6: Install hydraulic reservoir and valve bank. ....	6
Reservoir Assembly (2 Section Cable Controls) - PN 67093.....	7
Reservoir Assembly (3 Section Cable Controls) - PN 55230.....	8
Reservoir Assembly (2 Section Air Controls) - PN 64639 .....	9
Reservoir Assembly (3 Section Air Controls) - PN 65654 .....	10
Step 7: Install PTO and pump.....	13
Step 8: Route hydraulic hoses.....	14
Hose Kit - PN 54851 (Fixed Hook Height Models) .....	14
Hose Kit - PN 84189 (Adjustable Hook Height Models).....	15
Power Beyond VDM8 Valve .....	16
Step 9: Route Electrical Components.....	17
Step 10: Install cab and PTO controls.....	18
Cable Controls.....	18
Air Controls.....	19
Optional - Controller Pedestal Reinforcement .....	20
Step 11: Install mud flaps and fenders. ....	21
Step 12: Install Hoist Up Light Sensor - PN 83115 .....	21
Step 13: Apply Decals.....	22
Step 14: Fill reservoir and activate hydraulic flow.....	23
Step 15: Operate hooklift.....	23
Set System Relief Pressure.....	24
<b>Chapter 3 - Assembly Drawings .....</b>	<b>25</b>
Base Assembly - PN 53457 .....	25
Plunger Valve Assembly - PN 86130.....	25
Dump Assembly - PN 53735.....	27
Outside Latch Assembly - PN 55358 (Optional) .....	28
Inside Latch Assembly - PN 54216 (Optional).....	28
Secondary Assembly - PN 53669.....	29
Dump Latch Assembly - PN 80982.....	30
Main Cylinder Assembly - PN 53770.....	31
Jib Assembly (35.63" Hook Height) - PN 53463.....	32
Jib Assembly (54" Hook Height) - PN 53959.....	33
Jib Assembly (61.75" Hook Height) - PN 53960.....	34
Jib Assembly (35.63/54" Hook Height) - PN 53961 .....	35
Jib Assembly (54/61.75" Hook Height) - PN 53962 .....	37
Hose Track - PN 54213 .....	39
Slider26 Cylinder Assemblies.....	40
Toolbox Assembly - PN 8480 .....	41
Toolbox Assembly - PN 10401 .....	41
Toolbox Assembly - PN 10402 .....	41

# Introduction

A copy of this manual is provided with every hooklift and can be found in the hard plastic manual case that is installed on the chassis. A copy of this manual shall remain with the hooklift at all times.

Throughout the manual, three signal words will be used to bring attention to important items:

## **NOTICE**

A NOTICE signal word indicates a practice not related to physical injury.

## **⚠ WARNING**

A WARNING signal word indicates a hazardous situation which, if not avoided, could result in death or serious injury.

## **⚠ DANGER**

A DANGER signal word indicates a hazardous situation which, if not avoided, will result in death or serious injury.

Information contained within this manual does not cover operation, maintenance, or troubleshooting. Please refer to the General Slider Hooklift Manual for details on these items.

This manual is not binding. Stellar Industries, Inc. reserves the right to change, at any time, any or all of the items, components, and parts deemed necessary for product improvement or commercial/production purposes. This right is kept with no requirement or obligation for immediate mandatory updating of this manual.

In closing:

If more information is required or technical assistance is needed, or if you feel that any part of this manual is unclear or incorrect, please contact the Stellar Customer Service Department by phone at 800-321-3741 or email at [service@stellarindustries.com](mailto:service@stellarindustries.com).

**For Technical Questions, Information, Parts, or Warranty, Call Toll-Free at  
800-321-3741**

Hours: Monday - Friday, 8:00 a.m. - 5:00 p.m. CST

Or email at the following addresses:

**Technical Questions, and Information**

[service@stellarindustries.com](mailto:service@stellarindustries.com)

**Order Parts**

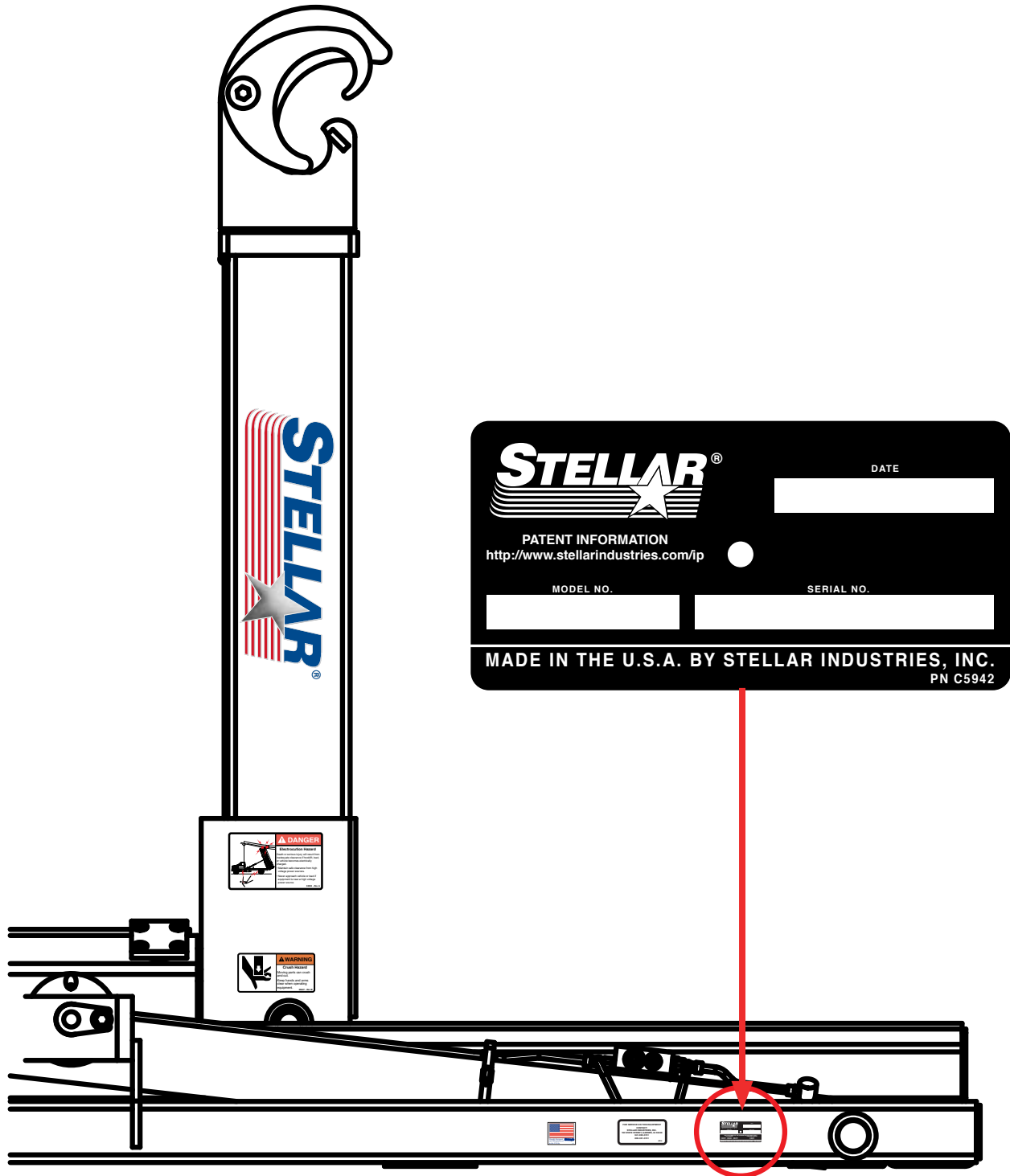
[parts@stellarindustries.com](mailto:parts@stellarindustries.com)

**Warranty Information**

[warranty@stellarindustries.com](mailto:warranty@stellarindustries.com)

# Serial Tag Location

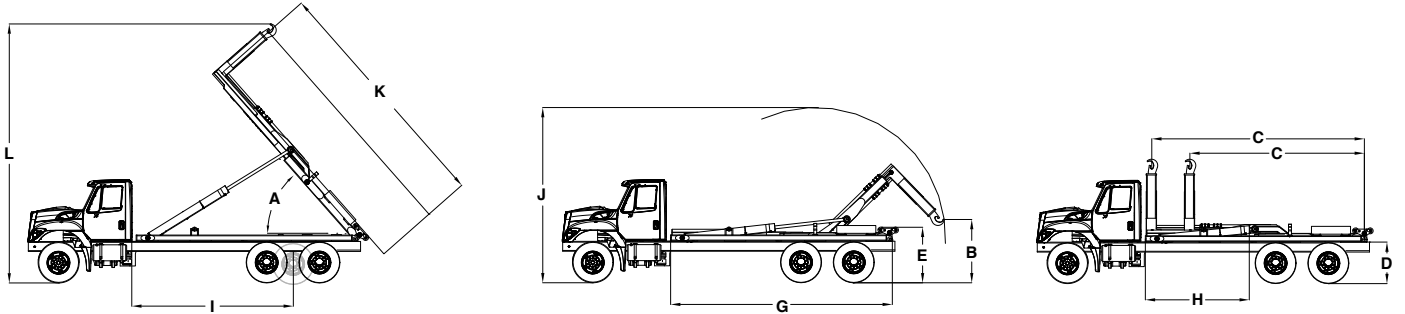
The serial tag should be located on the right side (passenger side) of the base assembly:



**This page intentionally left blank.**

# Chapter 1 - Specifications

## Slider26 Specifications



	35.63" (905mm) Fixed Hook Height	54" (1,372mm) Fixed Hook Height	61.75" (1,569mm) Fixed Hook Height	35.63" (905mm) to 54" (1,372mm) Adjustable Hook Height	54" (1,372mm) to 61.75" (1,569mm) Adjustable Hook Height
Lifting Capacity	26,000 lbs (11,703 kg)	26,000 lbs (11,703 kg)	26,000 lbs (11,703 kg)	26,000 lbs (11,703 kg)	26,000 lbs (11,703 kg)
Dumping Capacity	26,000 lbs (11,703 kg)	26,000 lbs (11,703 kg)	26,000 lbs (11,703 kg)	26,000 lbs (11,703 kg)	26,000 lbs (11,703 kg)
A Dump Angle	68°	68°	68°	68°	68°
B Lowest Hook Height	6" (152 mm)	41.5" (1,054 mm)	48.5" (1,232 mm)	6" or 41.5" (152 mm or 1,054 mm)	41.5" or 48.5" (1,054 mm or 1,232 mm)
C Effective Length	120.4" to 169.4" (3,058 mm to 4,302 mm)	120.4" to 169.4" (3,058 mm to 4,302 mm)	120.4" to 169.4" (3,058 mm to 4,302 mm)	120.4" to 169.4" (3,058 mm to 4,302 mm)	120.4" to 169.4" (3,058 mm to 4,302 mm)
D Truck Frame Height	40" (1,016 mm)	40" (1,016 mm)	40" (1,016 mm)	40" (1,016 mm)	40" (1,016 mm)
E Hooklift Height	51.88" (1,318 mm)	51.88" (1,318 mm)	51.88" (1,318 mm)	51.88" (1,318 mm)	51.88" (1,318 mm)
G Hooklift Length	182.75" (4,642 mm)	182.75" (4,642 mm)	182.75" (4,642 mm)	182.75" (4,642 mm)	182.75" (4,642 mm)
H Hooklift Center of Gravity	83.25" (2,115 mm)	83.25" (2,115 mm)	83.25" (2,115 mm)	83.25" (2,115 mm)	83.25" (2,115 mm)
I Chassis Cab to Axle	130" to 144" (3,302 mm to 3,658 mm)***	130" to 144" (3,302 mm to 3,658 mm)***	130" to 144" (3,302 mm to 3,658 mm)***	130" to 144" (3,302 mm to 3,658 mm)***	130" to 144" (3,302 mm to 3,658 mm)***
Chassis Cab to Trunion	130" to 138" (3,302 mm to 3,505 mm)***	130" to 138" (3,302 mm to 3,505 mm)***	130" to 138" (3,302 mm to 3,505 mm)***	130" to 138" (3,302 mm to 3,505 mm)***	130" to 138" (3,302 mm to 3,505 mm)***
J Max. Height When Loading	140.63" (3,572 mm)	152" (3,860 mm)	157.56" (4,002 mm)	140.63" or 152" (3,572 mm or 3,860 mm)	152" or 157.56" (3,860 mm or 4,002 mm)
K Longest Body When Dumping	18' (5.5 m)	18' (5.5 m)	18' (5.5 m)	18' (5.5 m)	18' (5.5 m)
L Max. Height When Dumping	225.59" (5,730 mm)	232.43" (5,904 mm)	235.43" (5,980 mm)	225.59" or 232.43" (5,730 mm or 5,903 mm)	232.43" or 235.43" (5,903 mm or 5,979 mm)
Maximum Operating Pressure	3,900 psi (27 MPa)	3,900 psi (27 MPa)	3,900 psi (27 MPa)	3,900 psi (27 MPa)	3,900 psi (27 MPa)
Hydraulic Flow	20 gpm (75 lpm)	20 gpm (75 lpm)	20 gpm (75 lpm)	20 gpm (75 lpm)	20 gpm (75 lpm)
Shipping Weight	3,200 lbs (1,451 kg)	3,300 lbs (1,497 kg)	3,400 lbs (1,542 kg)	3,500 lbs (1,588 kg)	3,600 lbs (1,633 kg)
Shipping Dimensions (LxWxH)	185" x 46" x 58"	185" x 46" x 76"	185" x 46" x 84"	185" x 46" x 58"	185" x 46" x 76"
Minimum Truck GVWR	25,000 lbs (11,340 kg)	25,000 lbs (11,340 kg)	25,000 lbs (11,340 kg)	25,000 lbs (11,340 kg)	25,000 lbs (11,340 kg)
Load Angle w/Shortest Body Length	43°	37°	37°	43° or 37°	37°
Recommended Container Lengths*	12' to 16' (3.7 m to 4.8 m)	12' to 16' (3.7 m to 4.8 m)	12' to 16' (3.7 m to 4.8 m)	12' to 16' (3.7 m to 4.8 m)	12' to 16' (3.7 m to 4.8 m)
Recommended Flatbed Lengths**	12' to 18' (3.7 m to 5.4 m)	12' to 18' (3.7 m to 5.4 m)	12' to 18' (3.7 m to 5.4 m)	12' to 18' (3.7 m to 5.4 m)	12' to 18' (3.7 m to 5.4 m)

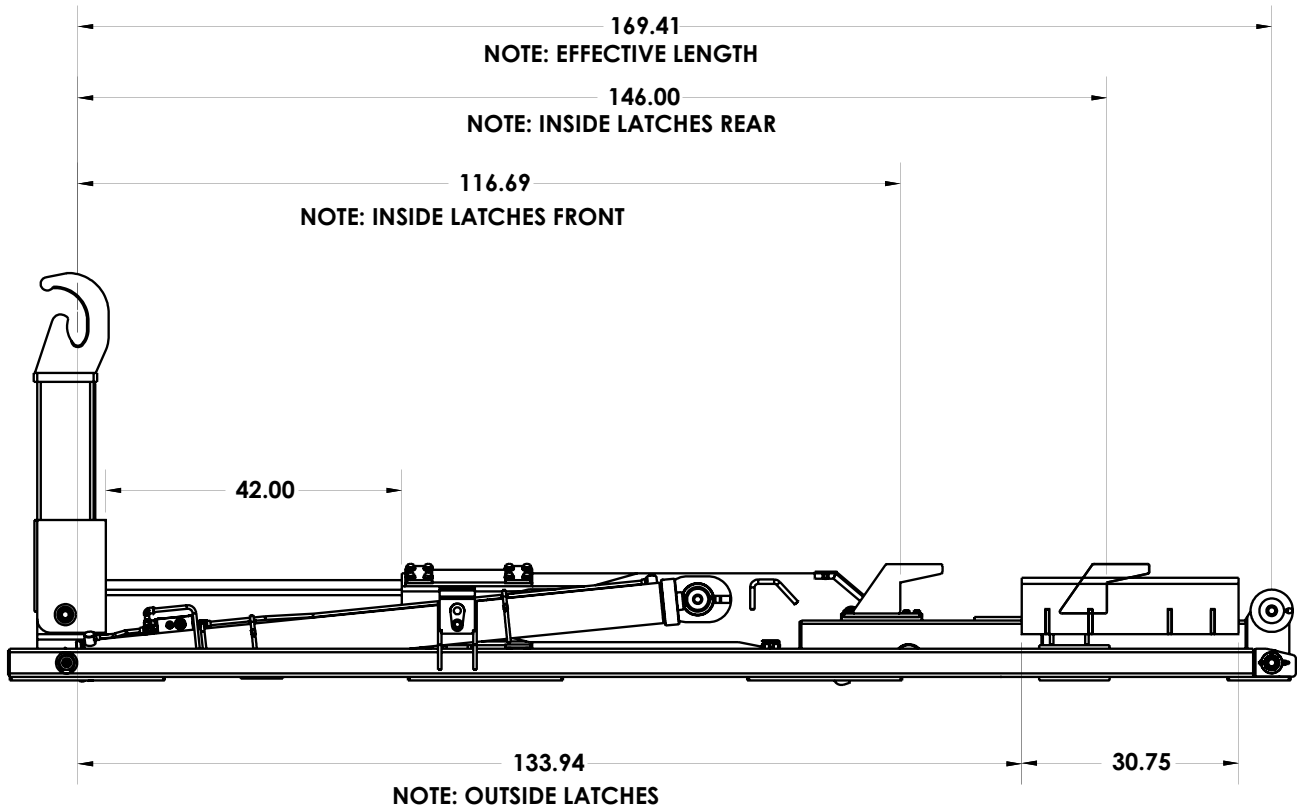
\*Assumes 3 ft. overhang from center of rear roller pin (Bumper typically 12" from center of roller pin)

\*\*Assumes 5 ft. overhang from center of rear roller pin (May require bumper and latch options)

\*\*\*Weight Distribution Required

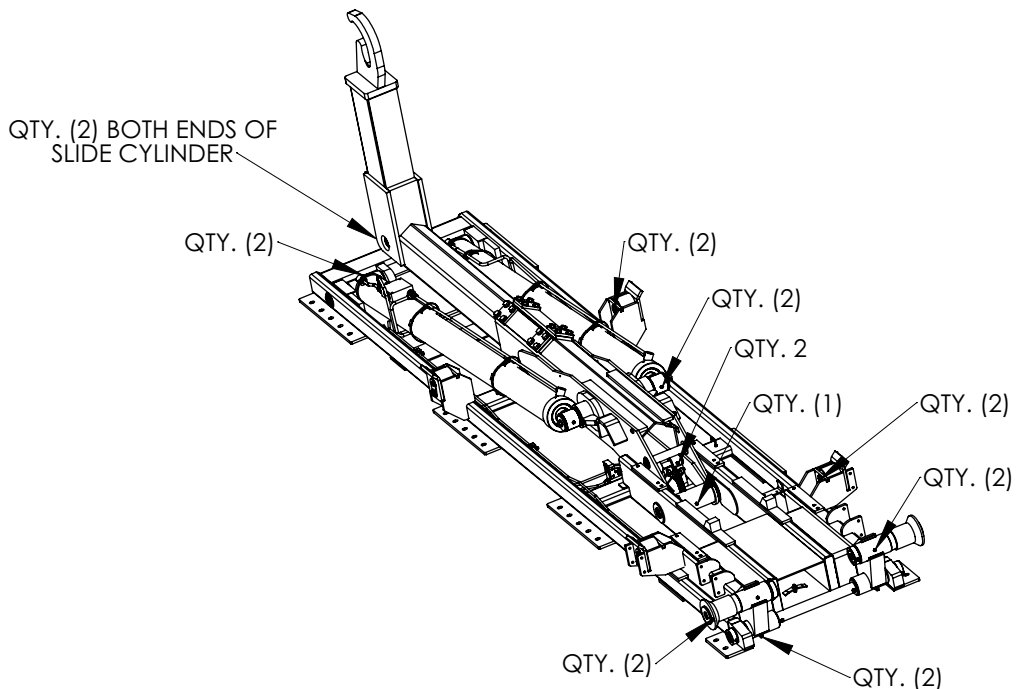
# Slider26 Latch Locations for Skid Compatibility

NOTE: INSIDE HOLD DOWNS CAN BE BOLTED IN FRONT OR REAR LOCATION



# Slider26 Grease Zerk Locations

Slider26



**Note: Grease After Every 100 Cycles.**



# Chapter 2 - Installation

## General Installation

This chapter is designed to serve as a general guide for the installation of a Stellar® Slider26 Hooklift. Each installation is considered unique so certain portions of this chapter may or may not apply to your direct application. If a question should arise during the installation process, please contact Stellar Customer Service at (800) 321 3741.

PTO and Pump installation instructions are provided by the corresponding manufacturers. For more information on which PTO and Pump fit your application, please contact your local Stellar Distributor or Stellar Customer Service.

**⚠ WARNING** Do not install this hooklift on a chassis not capable of handling the loads imposed on it. Failure to do so may result in serious injury or death.

**NOTICE** Do not weld or drill holes into the side wall of the base tubes.

### Hooklift Mounting and Assembly

Study names and locations of the parts and familiarize yourself with the hooklift before starting the assembly. Reading the step-by-step instructions that follow will be helpful.

#### Assembly

Select an area for assembly that will be large enough to accommodate the completed unit. The surface of the work area should be as level as possible. Use the proper hand tools to ensure proper bolt tightness. Refer to the torque data chart in this chapter for the recommended torque values for different sizes of bolts.

#### Model Number

Know the model number of the Stellar® Hooklift being mounted. Use this model number whenever referring to the assembly or parts listing pages. The number is stamped on the name plate which is located on the front frame member.

## Installer Notice

According to Federal Law (49 cfr part 571), each final-stage manufacturer shall complete the vehicle in such a manner that it conforms to the standards in effect on the date of manufacture of the incomplete vehicle, the date of final completion, or a date between those two dates. This requirement shall, however, be superseded by any conflicting provisions of a standard that applies by its terms to vehicles manufactured in two or more stages.

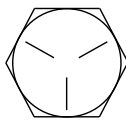
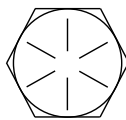
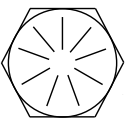
Therefore, the installer of Stellar® Hooklifts is considered one of the manufacturers of the vehicle. As such a manufacturer, the installer is responsible for compliance with all applicable federal and state regulations. They are required to certify that the vehicle is in compliance with the Federal Motor Vehicle Safety Standards and other regulations issued under the National Traffic and Motor Vehicle Safety Act.

Please reference the Code of Federal Regulations, title 49 - Transportation, Volume 5 (400-999), for further information, or visit <http://www.gpoaccess.gov/nara/index.html> for the full text of Code of Federal Regulations.

## Torque Data Chart

When using the torque data in the chart, the following rules should be observed:

- Bolt manufacturer's particular specifications should be consulted when provided.
- Flat washers of equal strength must be used.
- All torque measurements are given in foot-pounds. To convert to inch-pounds, multiply by 12.
- Torque values specified are for bolts with residual oils or no special lubricants applied. If special lubricants of high stress ability, such as Never-Seez compound graphite and oil, molybdenum disulphite, colloidal copper or white lead are applied, multiply the torque values in the charts by the factor .90. The use of Loctite does not affect the torque values listed above.

		GRADE 5		GRADE 8		GRADE 9
						
Size (DIA-TPI)	Bolt DIA (Inches)	Plain (Ft-Lb)	Plated (Ft-Lb)	Plain (Ft-Lb)	Plated (Ft-Lb)	Plated (Ft-Lb)
5/16-18	0.3125	17	13	25	18	22
3/8-16	0.3750	31	23	44	33	39
7/16-14	0.4375	49	37	70	52	63
1/2-13	0.5000	75	57	105	80	96
9/16-12	0.5625	110	82	155	115	139
5/8-11	0.6250	150	115	220	160	192
3/4-10	0.7500	265	200	375	280	340
7/8-9	0.8750	395	295	605	455	549
1-8	1.000	590	445	910	680	823
1 1/8-7	1.1250	795	595	1290	965	1167
1 1/4-7	1.2500	1120	840	1815	1360	1646
1 3/8-6	1.3750	1470	1100	2380	1780	2158
1 1/2-6	1.500	1950	1460	3160	2370	2865

- Torque values for socket-head capscrews are the same as for Grade 8 capscrews.
- Do not use these values if a different torque value or tightening procedure is given for a specific application. Torque values listed are for general use only. Check tightness of fasteners periodically.
- Sheer bolts are designed to fail under predetermined loads. Always replace shear bolts with identical grade.
- Fasteners should be replaced with the same or higher grade. If higher grade fasteners are used, these should only be tightened to the strength of the original.
- Tighten plastic insert or crimped steel-type lock nuts to approximately 110 percent of the dry torque values shown in the chart below, applied to the nut, not to the bolt head. Tighten toothed or serrated-type lock nuts to the full torque value. *Note: "Lubricated" means coated with a lubricant such as engine oil, or fasteners with phosphate and oil coatings. "Dry" means plain or zinc plated without lubrication. Tighten lubricated bolts to approximately 80% of dry bolts.*

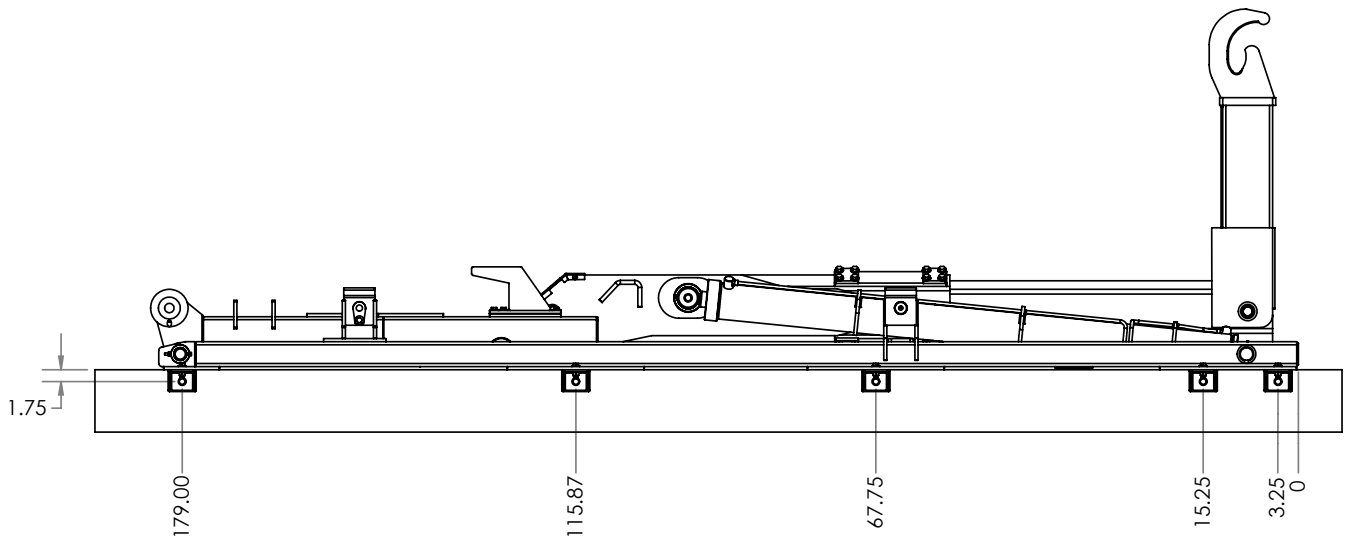
## Installation Note

Every hooklift installation is unique. However, certain guidelines exist that apply to every model. Listed below is a general set of chronological steps that may be followed when installing a Stellar Hooklift. If any questions arise during the installation process, feel free to contact your local dealer or Stellar Customer Service at 800-321-3741.

## Step 1: Set the hooklift onto the truck frame.

- Visually inspect the truck and look for any potential issues. For example: Clearance problems, cross members extending too high, insufficient room in front of the Slider for tarpers, exhaust manifolds, etc., or insufficient room in the rear to allow for bumper selection. *Note: Stellar Industries recommends allowing 12" behind the start of clear truck frame for installation of a tarping system.*
- Be sure to square the Slider on the truck frame to allow for proper measurement. The front of the hooklift needs to be at least 2.50" behind the cab or any equipment mounted behind the cab. *Note: On some Slider models, the jib may extend beyond the front of the base.*

## Step 2: Drill mounting holes.

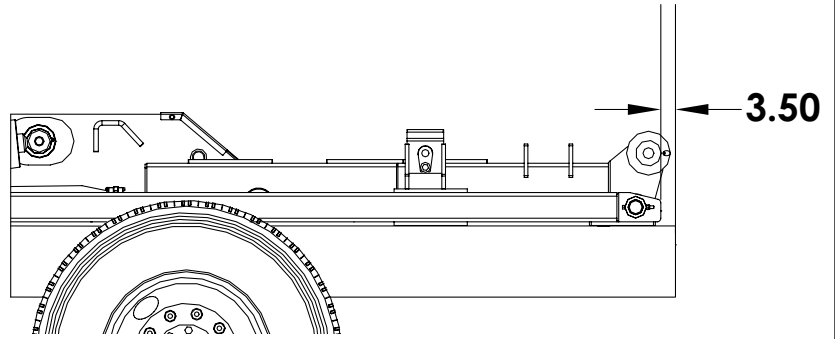


Note: These are approximate measurements from the front of the hooklift base. Specific applications may vary.

- When positioning mounts to frame, tie-down castings are bolted to the underside of each tie down plate located on the outside of the main rails of the base. The tie-down plate closest to the front of the base requires one mount on each side of the pin. This is the only time two tie down castings are required per a single tie-down plate. The tie-down plates are designed with multiple slots to offer more flexibility in mounting locations. Additional holes may not be added to the tie-down plates.
- Using the tie-down castings as a guide, drill 11/16" holes through the truck frame as shown.

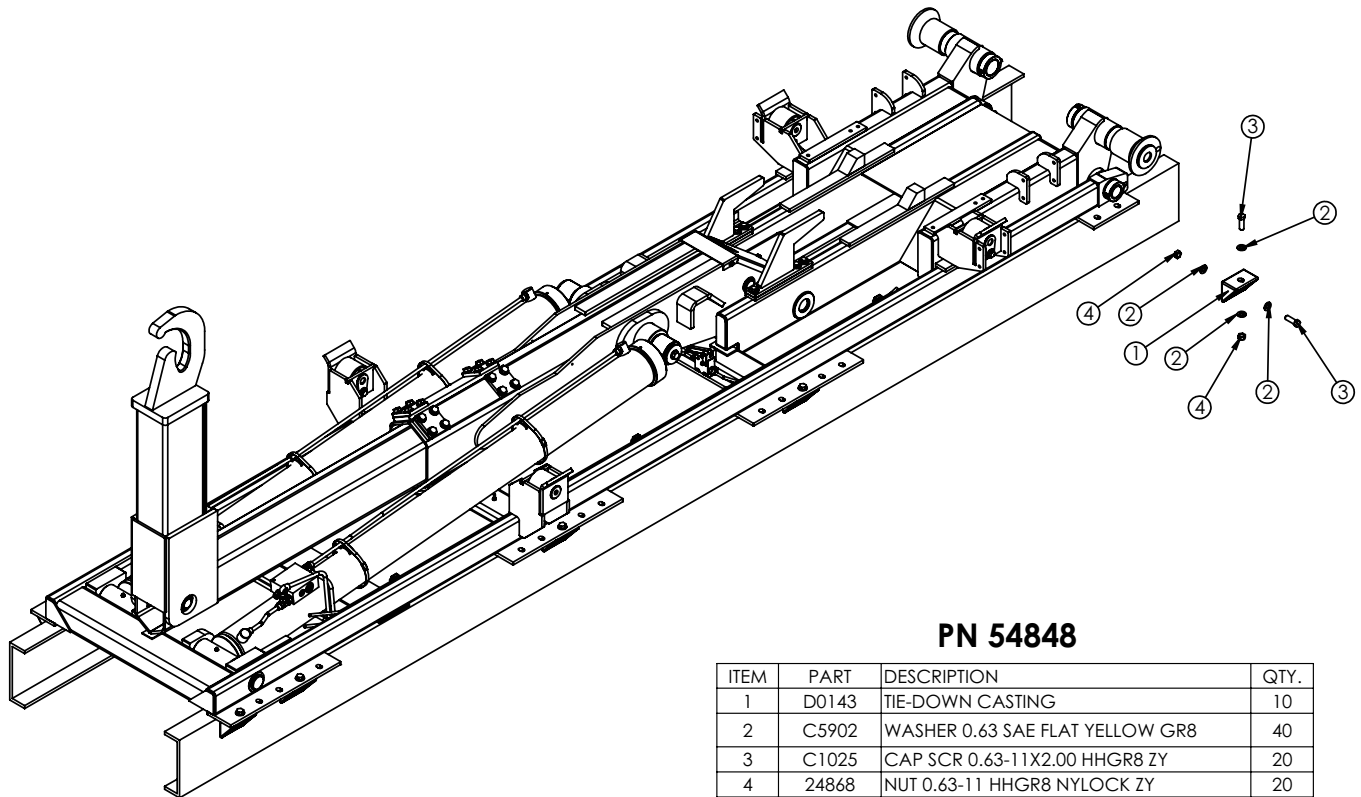
## Step 3: Install bumper.

- See NHTSA (National Highway Truck Safety Administration) Regulations for acceptable placement.
- Modify the truck frame as necessary so that it ends 2" from the rear of the hooklift.



## Step 4: Install tie-downs.

Note: See torque chart at beginning of chapter:



## Step 5: Install taper tower (If applicable).

See brand specific installation instructions.

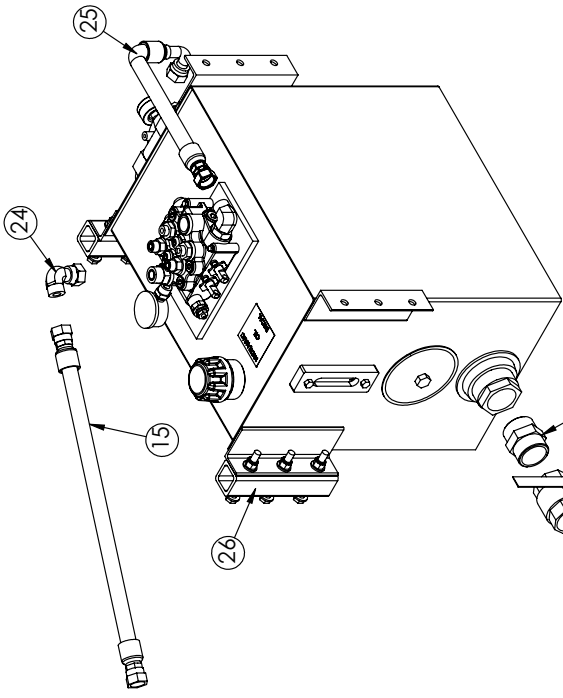
## Step 6: Install hydraulic reservoir and valve bank.

- Before drilling and bolting to the frame, confirm adequate room for cable routing between in-cab controls and the valve bank. **Note: The top of the reservoir should not be above the truck frame.**

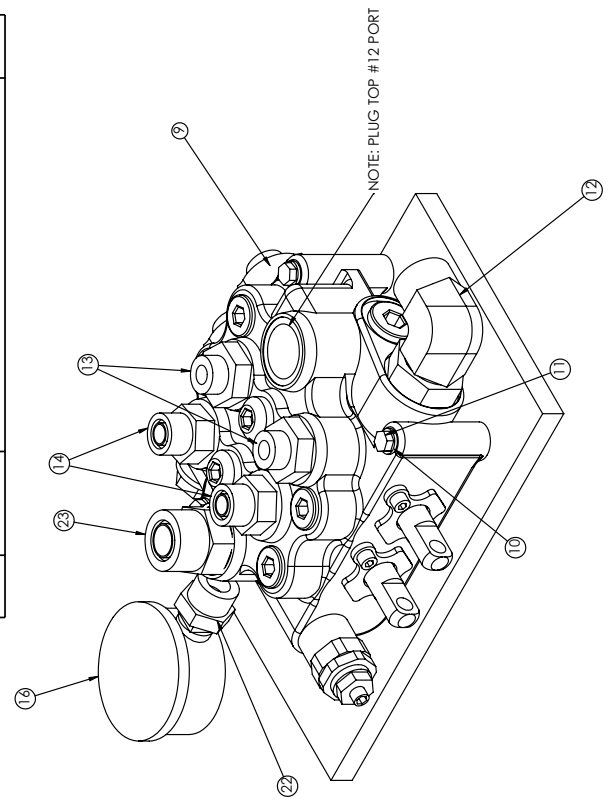
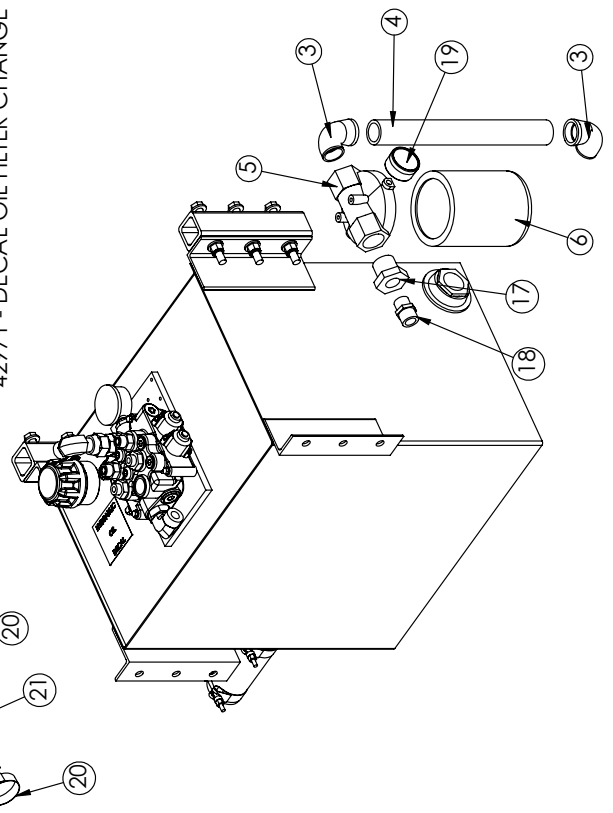
# Reservoir Assembly (2 Section Cable Controls) - PN 67093

## PN 67093

ITEM	PART	DESCRIPTION	QTY
1	26510	RSRVR ASM 25GAL K MODEL	1
2	7353	FTG 32-32 MP-MP HEX NIPPLE STRAIGHT	1
3	C4694	ST EL 1.25 90 DEG BLK	2
4	D0024	NIPPLE 1.25X14.00 BLK	1
5	C6228	FILTER HEAD SF120-25 1.3	1
6	C6225	FILTER LARGE SE-10	1
7	C4750	VALVE BALL 2.00	1
8	C4730	FTG 32-32 MP-HB STRAIGHT	1
9	24611	VB 2-SECTION VDM8	1
10	0521	WASHER 0.25 LOCK	3
11	0339	CAP SCR 0.25-20X2.50 HHGR5	3
12	C5968	FTG 12-12 MFS-MAORB 90	1
13	C1855	FTG 6-10 MFS-MORB STRAIGHT	2
14	C2252	FTG 8-10 MFS-MORB STRAIGHT	2
15	27119	HOSE 0.75(78C-12-JC-12-12-120)	1
16	10094	GAUGE OIL LF 2.5" 0-50000 BM	1
17	C2375	FTG 20-12 MP-FP REDUCER BUSHING	1
18	C4952	FTG 12-12 MFS-MP STRAIGHT	1
19	16145	GAUGE PRES FILTER SERVICE C120	1
20	C4819	HOSE CLAMP 2.00	2
21	17766	HOSE SUCT 2.00 10FT	1
22	25630	FTG 10-4 MORB-FP STRAIGHT	1
23	d1435	FTG 12-10 MFS-MORB STRAIGHT	1
24	C4903	FTG 12-12 MFS-FFSS 90	1
25	83960	HOSE 0.75(4500PSI)-12FFSS SHORT-12FFSS 90 SHORT-14CL	1
26	83959	MINT KIT RSRVR 25G	1



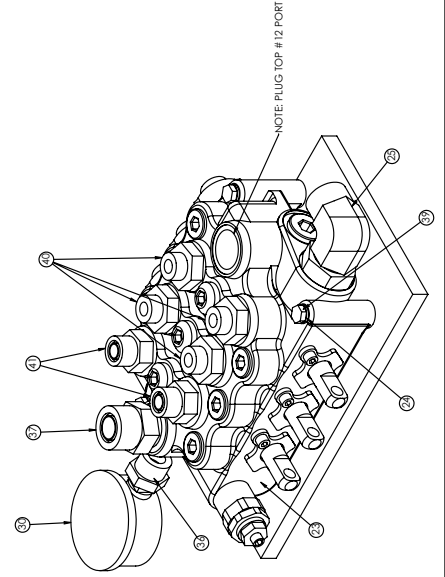
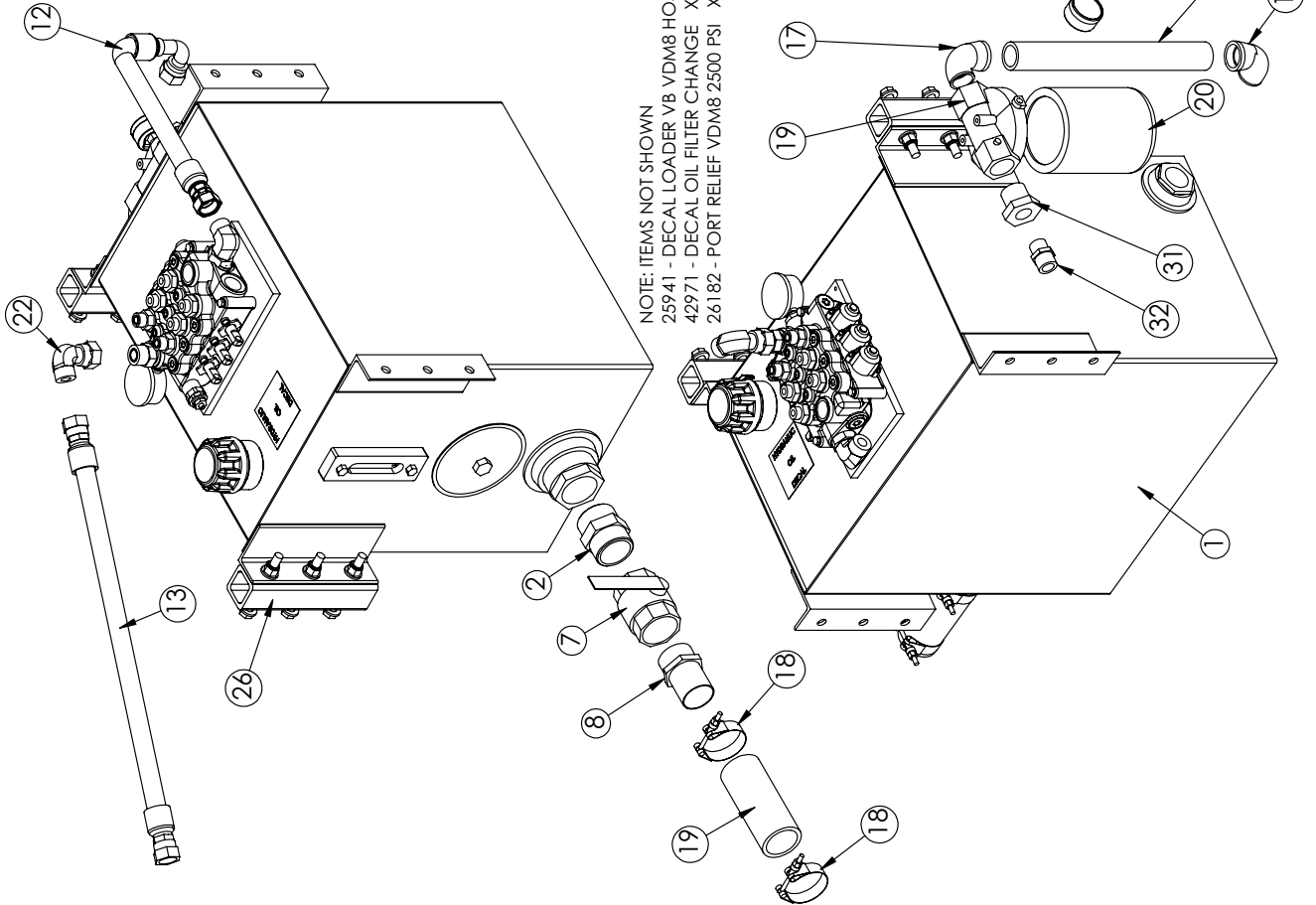
NOTE: ITEMS NOT SHOWN  
 25941 - DECAL LOADER VB VDM8 HOSE LOCATION X 1  
 42971 - DECAL OIL FILTER CHANGE X 1



# Reservoir Assembly (3 Section Cable Controls) - PN 55230

## PN 55230

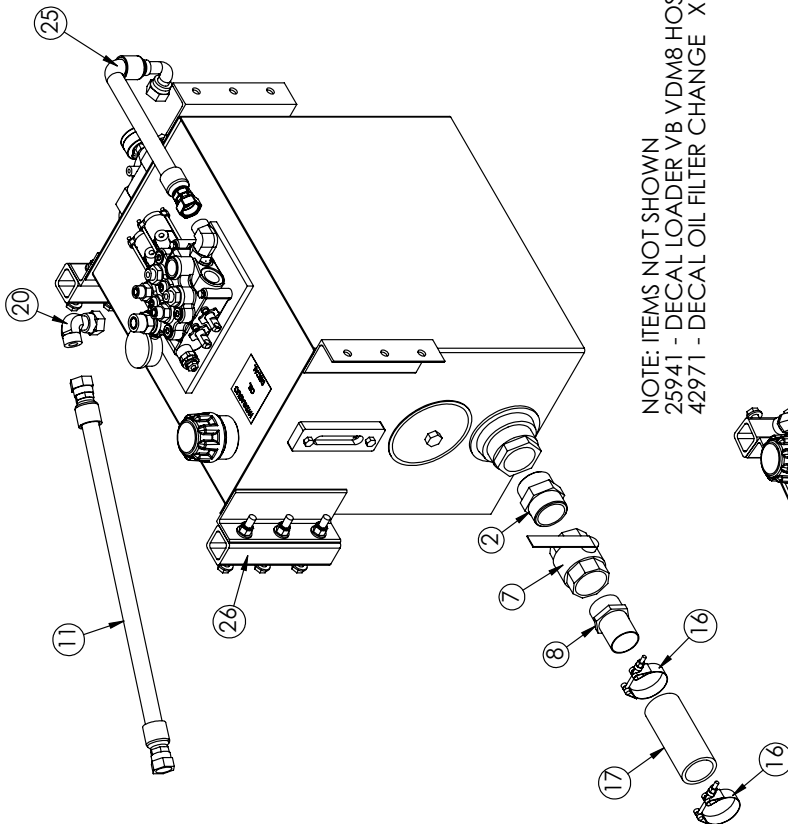
ITEM	PART	DESCRIPTION	QTY.
1	26510	RSRVR ASM 25GAL K MODEL	1
2	7353	FTG 32-32 MP-MP HEX NIPPLE STRAIGHT	1
3	C4694	ST EL 1.25 90 DEG BLK	2
4	D0024	NIPPLE 1.25X14.00 BLK	1
5	C6228	FILTER HEAD SF120-25 1.3	1
6	C6225	FILTER LARGE SE-10	1
7	C4750	VALVE BALL 2.00	1
8	C4730	FTG 32-32 MP-HB STRAIGHT	1
9	38230	VB 3-SECT VDM8	1
10	0521	WASHER 0.25 LOCK	3
11	C5968	FTG 12-12 MFS-MA ORB 90	1
12	83960	HOSE 0.75(4500PSI)-12FFSS SHORT-12FFSS 90.SHORT-14CL	1
13	27119	HOSE 0.75(78C-12-JC-JC-12-12-12-120)	1
14	10094	GAUGE OIL LF 2.5" 0-5000 BM	1
15	C2375	FTG 20-12 MP-FP REDUCER BUSHING	1
16	C4952	FTG 12-12 MFS-MP STRAIGHT	1
17	16145	GAUGE PRES FILTER SERVICE C120	1
18	c4819	HOSE CLAMP 2.00	2
19	17766	HOSE SUCT 2.00 10FT	1
20	25630	FTG 10-4 MORB-FP STRAIGHT	1
21	d1435	FTG 12-10 MFS-MORB STRAIGHT	1
22	c4903	FTG 12-12 MFS-FFSS 90	1
23	0339	CAP SCR 0.25-20X2.50 HHGR5	3
24	C1855	FTG 6-10 MFS-MORB STRAIGHT	4
25	C2252	FTG 8-10 MFS-MORB STRAIGHT	2
26	83959	MNT KIT RSRVR 25G	1



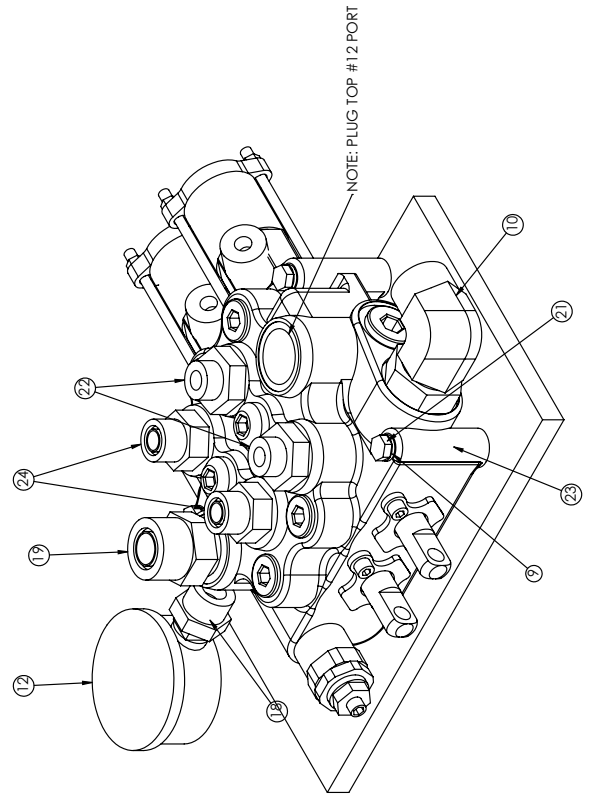
# Reservoir Assembly (2 Section Air Controls) - PN 64639

## PN 64639

ITEM	PART	DESCRIPTION	QTY
1	26510	RSVR ASM 25GALK MODEL	1
2	7353	FTG 32-32 MP-MP HEX NIPPLE STRAIGHT	1
3	C4694	ST EL 1.25 90 DEG BLK	2
4	D0024	NIPPLE 1.25X14.00 BLK	1
5	C6228	FILTER HEAD SF120-25 1.3	1
6	C6225	FILTER LARGE SE-10	1
7	C4750	VALVE BALL 2.00	1
8	C4730	FTG 32-32 MP-HB STRAIGHT	1
9	0521	WASHER 0.25 LOCK	3
10	C5948	FTG 12-12 MFS-MAORB 90	1
11	27119	HOSE 0.75(78C-12-JC-12-12-12-120)	1
12	10094	GAUGE OIL LF 2.5" 0-5000 BM	1
13	C2375	FTG 20-12 MP-FP REDUCER BUSHING	1
14	C4952	FTG 12-12 MFS-MP STRAIGHT	1
15	16145	GAUGE PRES FILTER SERVICE CI20	1
16	C4819	HOSE CLAMP 2.00	2
17	17766	HOSE SUCT 200 TOFT	1
18	25630	FTG 10-4 MORB-FP STRAIGHT	1
19	d1435	FTG 12-10 MFS-MORB STRAIGHT	1
20	c4903	FTG 12-12 MFS-FFSS 90	1
21	0339	CAP SCR 0.25-20X2.50 HHGR5	3
22	C1855	FTG 6-10 MFS-MORB STRAIGHT	2
23	25940	VB 2-SECTION VDM8 W/AIR ACTUATORS	1
24	C2252	FTG 8-10 MFS-MORB STRAIGHT	2
25	83960	HOSE 0.75(4500PSI)-12FFSS SHORT-F12FFSS 90.SHORTL4CL	1
26	83959	MNT KIT RSRVR 25G	1



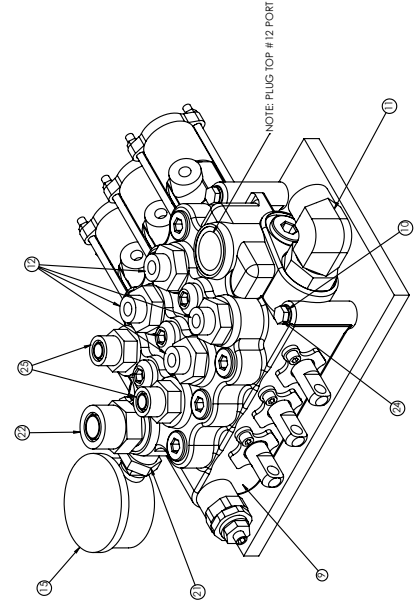
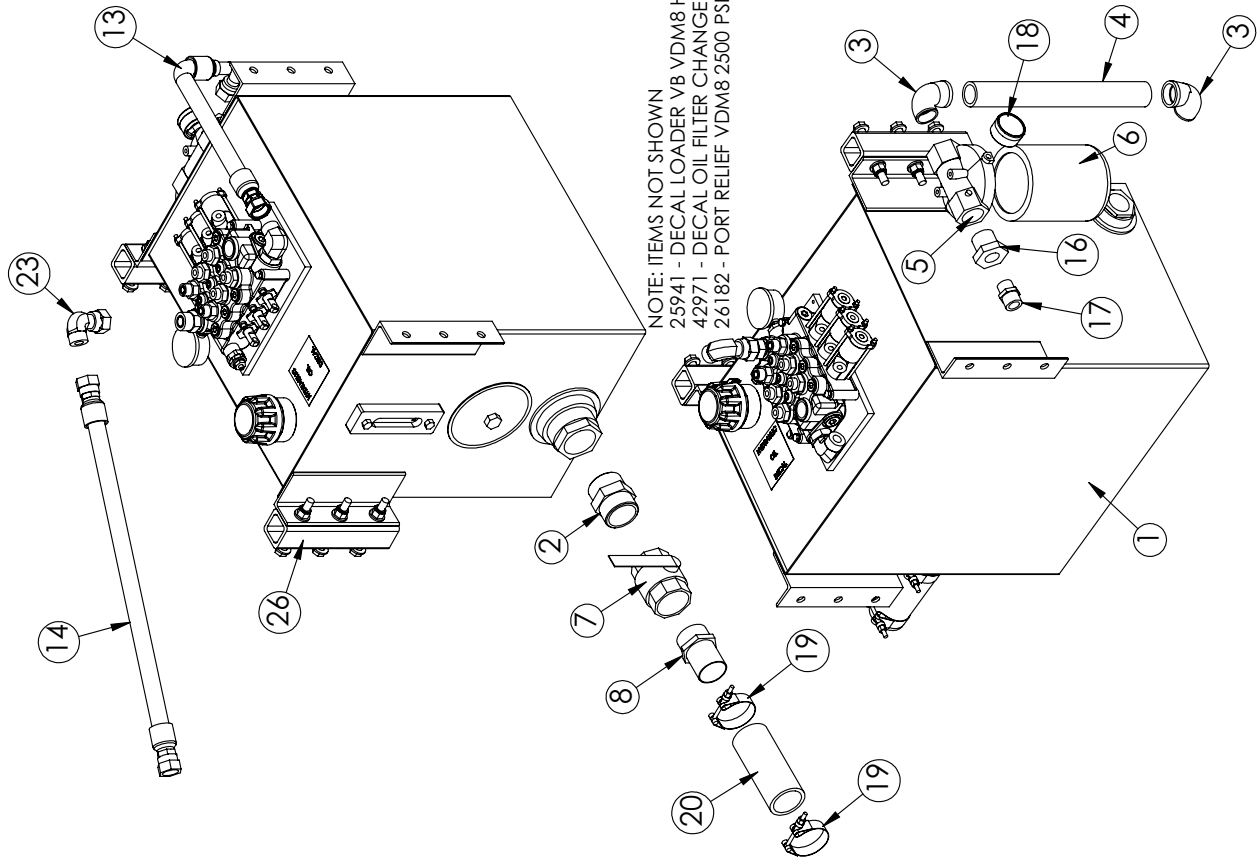
NOTE: ITEMS NOT SHOWN  
 25941 - DECAL LOADER VB VDM8 HOSE LOCATION X 1  
 42971 - DECAL OIL FILTER CHANGE X 1



# Reservoir Assembly (3 Section Air Controls) - PN 65654

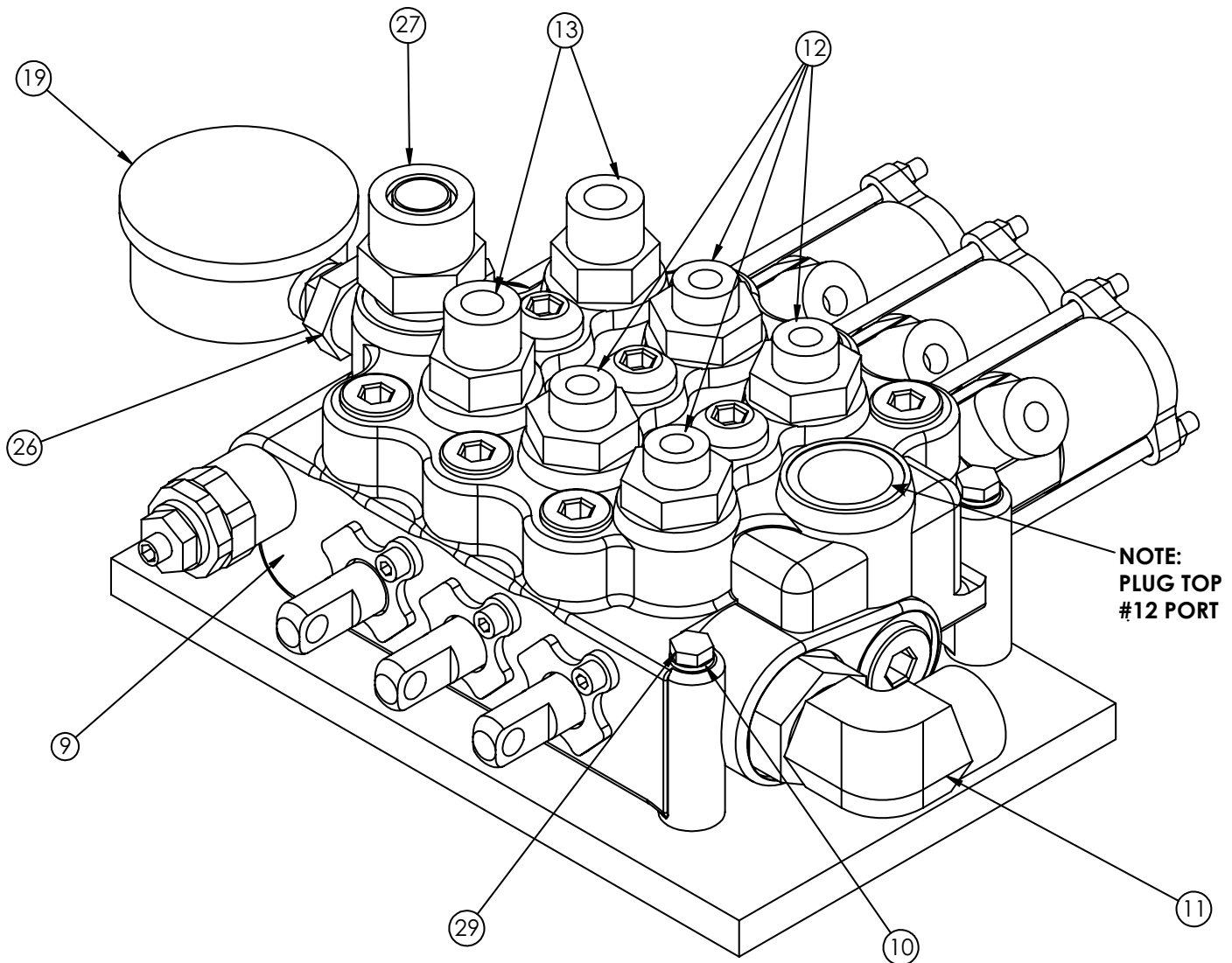
## PN 65654

ITEM	PART	DESCRIPTION	QTY.
1	26510	RSRVR ASM 25GAL K MODEL	1
2	7353	FG 32-32 MP-MP HEX NIPPLE STRAIGHT	1
3	C4694	ST EL 1.25 90 DEG BLK	2
4	D0024	NIPPLE 1.25X1.4.00 BLK	1
5	C6228	FILTER HEAD SF120-25 1.3	1
6	C6225	FILTER LARGE SE-10	1
7	C4750	VALVE BALL 2.00	1
8	C4730	FG 32-32 MP-HB STRAIGHT	1
9	47562	VB 3-SECTION VDM8 W/AIR ACTUATORS	1
10	0521	WASHER 0.25 LOCK	3
11	C5968	FG 12-12 MFS-MAORB 90	1
12	C1855	FG 6-10 MFS-MORB STRAIGHT	4
13	83960	HOSE 0.75 (4500PSI)-12FSS SHORT-12FSS 90.SHORTEL.4CL	1
14	27119	HOSE 0.75 (78C-12-JC-12-12-12-120)	1
15	10094	GAUGE OIL LF 2.5" 0-5000 BM	1
16	C2375	FG 20-12 MP-FP REDUCER BUSHING	1
17	C4952	FG 12-12 MFS-MP STRAIGHT	1
18	16145	GAUGE PRES FILTER SERVICE C120	1
19	c-4819	HOSE CLAMP 2.00	2
20	17766	HOSE SUCT 2.00 10FT	1
21	25630	FG 10-4 MORB-FP STRAIGHT	1
22	d1435	FG 12-10 MFS-MORB STRAIGHT	1
23	c4903	FG 12-12 MFS-FSS 90	1
24	0339	CAP SCR 0.25-20X2.50 HHGR5	3
25	C2252	FG 8-10 MFS-MORB STRAIGHT	2
26	83959	MNT KIT RSRVR 25G	1





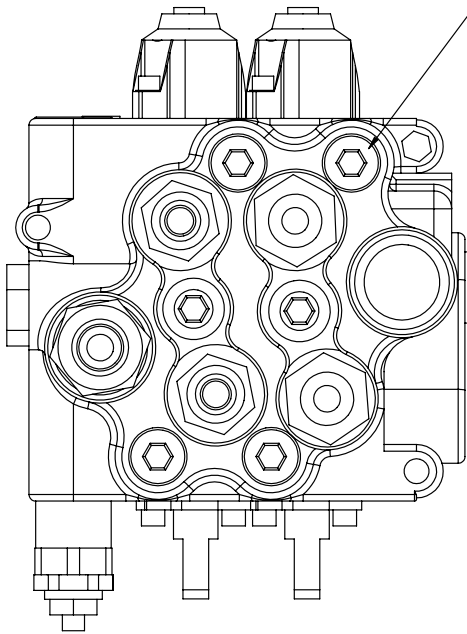
## Step 6: Install hydraulic reservoir and valve bank continued...



ITEM	PART	DESCRIPTION	QTY
9	47562	VB 3-SECTION VDM8 W/AIR ACTUATORS	1
10	0521	WASHER 0.25 LOCK	3
11	C5968	FTG ADAPT 90 12-C5OLO-S	1
12	C1855	FTG ADAPT 6-10 F5OLO-S	4
13	16152	FTG ADAPT 10-F5OLO-S	2
19	10094	GAUGE OIL LF 2.5" 0-500 BM	1
26	25630	FTG ADAPT 10-1/4 F5OG	1
27	d1435	FTG ADAPT O'RING 12-10	1
29	0339	CAP SCR 0.25-20X2.50 HHGR5	3

# Step 6: Install hydraulic reservoir and valve bank continued...

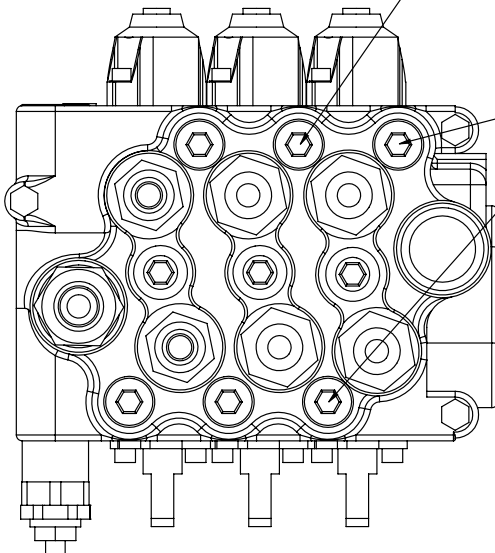
## 2 Section Valve Bank



NOTE: INSTALL PORT RELIEF 26182 HERE WHEN PN'S FROM THE FOLLOWING LIST ARE USED.

DUMP ASM'S  
61370  
LATCH KITS  
54216  
66598  
62315  
70405  
55758

## 3 Section Valve Bank



NOTE: INSTALL PORT RELIEF 26182 HERE WHEN PN'S FROM THE FOLLOWING LIST ARE USED.

DUMP ASM'S  
61370  
LATCH KITS  
54216  
66598  
62315  
70405  
55758

NOTE: INSTALL PORT RELIEF 26182 HERE.

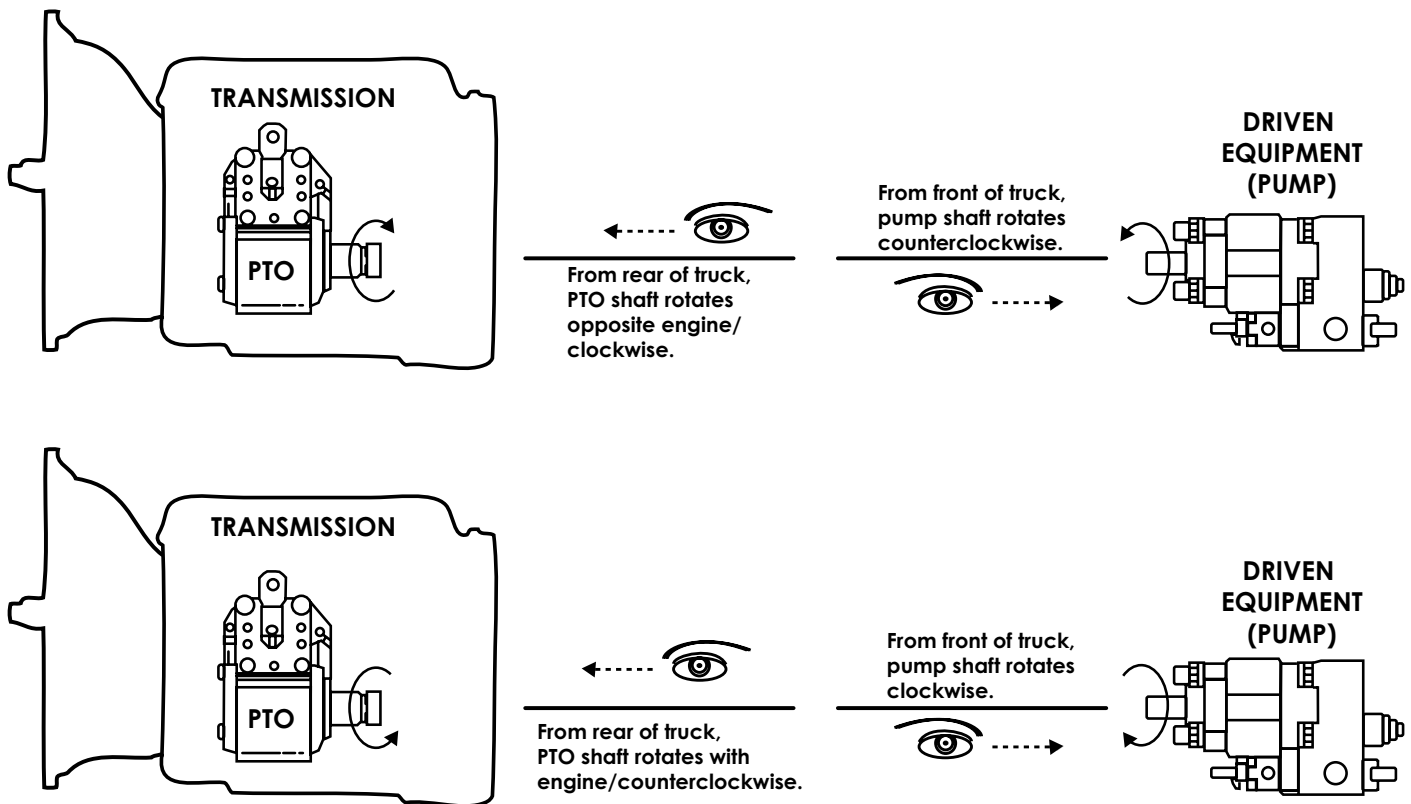
## Step 7: Install PTO and pump.

- Before installing the pump to the PTO, always check the direction of the PTO output shaft to determine which direction the hydraulic pump needs to rotate to operate the equipment. If this is not determined prior to installing the hydraulic pump, the hydraulic pump may rotate in the incorrect direction and damage the front shaft seal.

### PTO Direction of Rotation Tip:

Viewed by standing at the rear of the vehicle, looking forward at the PTO shaft, with the PTO shaft pointing toward the rear of the vehicle:

P.T.O.	Driven Equipment
Rotates Opposite Engine (looks "clockwise")	Driven equipment must rotate counterclockwise (also called left-hand rotation, "A" for anti-clockwise or C.C.W. for counter clockwise).
Rotates With Engine (looks "counterclockwise")	Driven equipment must rotate clockwise (also called right-hand rotation or "C" for clockwise).



Remember that the PTO is specified by looking from the rear of the truck to the front of the truck. The driven equipment (pump) is specified by looking from the front of the truck to the rear of the truck.

- Use the brand specific PTO/Pump installation instructions. If the directions are not quite clear, contact Stellar® Customer Service or consult with a hydraulic specialty house or company prior to installation.

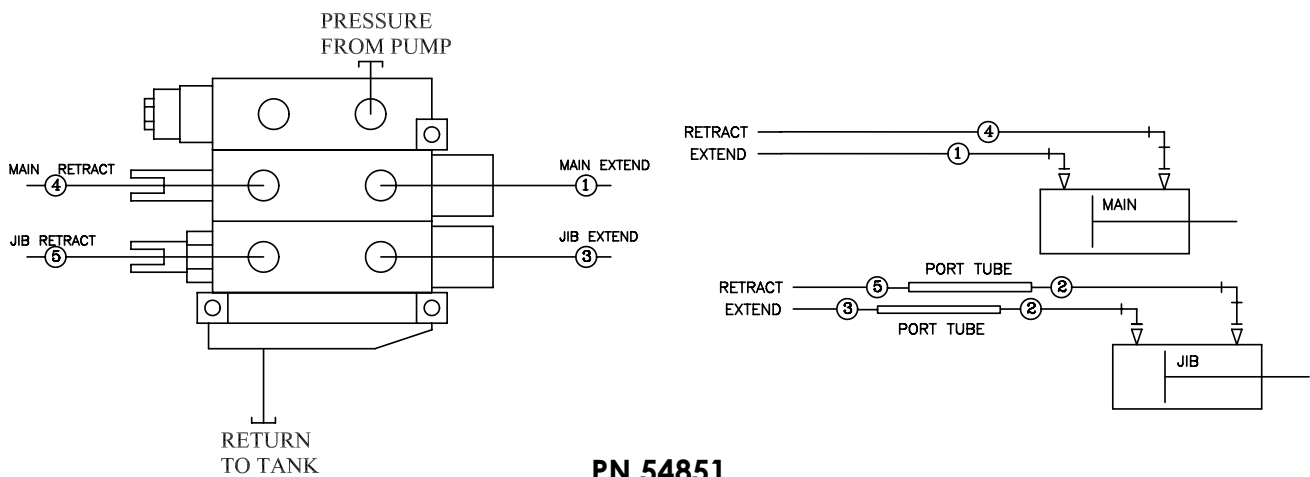
# Step 8: Route hydraulic hoses.

1. Route hose line from the reservoir to the pump (See hose kit drawing for details).
  2. Route hose line from the pump to the valve bank (See hose kit drawing for details).
  3. Route hose line from the valve bank to the reservoir (See hose kit drawing for details).
  4. Route hose line from the valve bank and the hooklift (See hose kit drawing for details).
- Note: If using the Power Beyond feature for additional function, see "Power Beyond VDM8 Valve" later in this chapter for further details.

## Notes on hose line routing:

- Protect these lines with hose wrap when necessary.
- Keep these lines away from sharp edges.
- Keep these lines away from the exhaust or other temperature extreme items.
- Keep these lines away from the driveshaft or other moving items.

## Hose Kit - PN 54851 (Fixed Hook Height Models)

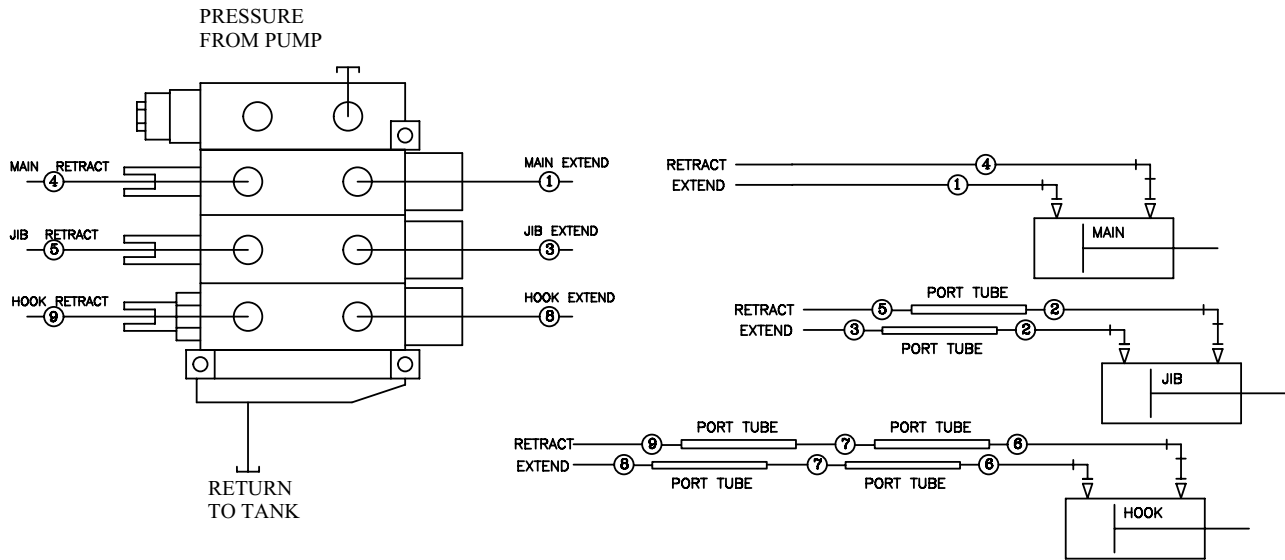


### PN 54851

05	55361	HOSE 0.38(471TC-JO-J1-6-6-6-60)	1
04	55360	HOSE 0.50(471TC-JC-J1-8-8-8-88)	1
03	55352	HOSE 0.38(471TC-JO-J9-6-6-6-60)	1
02	55353	HOSE 0.38(471TC-JO-J9-6-6-6-110)	2
01	55354	HOSE 0.50(471TC-JC-J9-8-8-8-88)	1
ITEM	PART No.	DESCRIPTION	QTY

<p>STELLAR #55354- (471TC-JC-J9-8-8-8-88") QTY - 1</p> <p>FUNCTION: MAIN CYLINDER TO VALVE BANK EXTEND</p>	<p>STELLAR #55353- (471TC-JO-J9-6-6-6-110") QTY - 2</p> <p>FUNCTION: PORT TUBES TO THE JIB CYLINDER</p>	
<p>STELLAR #55360- (471TC-JC-J1-8-8-8-88") QTY - 1</p> <p>FUNCTION: MAIN CYLINDER TO VALVE BANK RETRACT</p>	<p>STELLAR #55361- (471TC-JO-J1-6-6-6-60") QTY - 1</p> <p>FUNCTION: PORT TUBE TO THE VALVE BANK RETRACT</p>	<p>STELLAR #55352- (471TC-JO-J9-6-6-6-60") QTY - 1</p> <p>FUNCTION: PORT TUBE TO THE VALVE BANK EXTEND</p>

# Hose Kit - PN 84189 (Adjustable Hook Height Models)



09	84190	HOSE 0.25(3000PSI)-4MFS-6FFSS 90 LONG-60CL	1
08	84191	HOSE 0.25(3000PSI)-4MFS-6FFSS 90 SHORT-60CL	1
07	84618	HOSE 0.25(3000PSI)-4MFS-4MFS-110CL	2
06	84617	HOSE 0.25(3000PSI)-4FFSS SHORT-4MFS-99CL	2
05	55361	HOSE 0.38(4500PSI)-6MFS-6FFSS 90 LONG-60CL	1
04	55360	HOSE 0.50(4500PSI)-8FFSS SHORT-8FFSS 90 LONG-88CL	1
03	55352	HOSE 0.38(4500PSI)-6MFS-6FFSS 90 SHORT-60CL	1
02	55353	HOSE 0.38(4500PSI)-6MFS-6FFSS 90 SHORT-110CL	2
01	55354	HOSE 0.50(4500PSI)-8FFSS SHORT-8FFSS 90 SHORT-88CL	1
ITEM	PART No.	DESCRIPTION	QTY

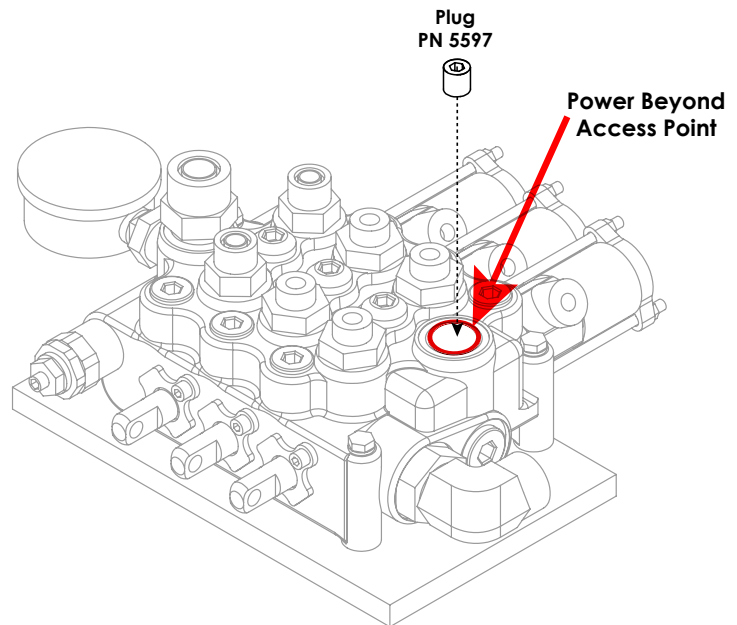
NOTE: SYSTEM PRESSURE IS 4500 P.S.I.

<p>STELLAR #84617- 0.25(3000PSI)-4FFSS SHORT-4MFS-99CL QTY - 2</p> <p>FUNCTION: HOOK HEIGHT CYLINDER TO PORT TUBE (EXT. AND RET.)</p>	<p>STELLAR #84191 -0.25(3000PSI)-4MFS-6FFSS 90 SHORT-60CL QTY - 1</p> <p>FUNCTION: H.H. CYLINDER PORT TUBE TO VALVE BANK EXTEND</p>	<p>STELLAR #84190-0.25(3000PSI)-4MFS-6FFSS 90 LONG-60CL QTY - 1</p> <p>FUNCTION: H.H. CYLINDER PORT TUBE TO VALVE BANK RETRACT</p>
<p>STELLAR #55354-0.50(4500PSI)-8FFSS SHORT-8FFSS 90 SHORT-88CL QTY - 1</p> <p>FUNCTION: MAIN CYLINDER TO VALVE BANK EXTEND</p>	<p>STELLAR #55353-0.38(4500PSI)-6MFS-6FFSS 90 SHORT-110CL QTY - 2</p> <p>FUNCTION: PORT TUBE TO THE JIB CYLINDER</p>	<p>STELLAR #84618-0.25(3000PSI)-4MFS-4MFS-110CL QTY - 2</p> <p>FUNCTION: HOOK HEIGHT PORT TUBE TO PORT TUBE</p>
<p>STELLAR #55360-0.50(4500PSI)-8FFSS SHORT-8FFSS 90 LONG-88CL QTY - 1</p> <p>FUNCTION: MAIN CYLINDER TO VALVE BANK RETRACT</p>	<p>STELLAR #55361- 0.38(4500PSI)-6MFS-6FFSS 90 LONG-60CL QTY - 1</p> <p>FUNCTION: JIB CYLINDER PORT TUBE TO VALVE BANK RETRACT</p>	<p>STELLAR #55352-0.38(4500PSI)-6MFS-6FFSS 90 SHORT-60CL QTY - 1</p> <p>FUNCTION: JIB CYLINDER PORT TUBE TO VALVE BANK EXTEND</p>

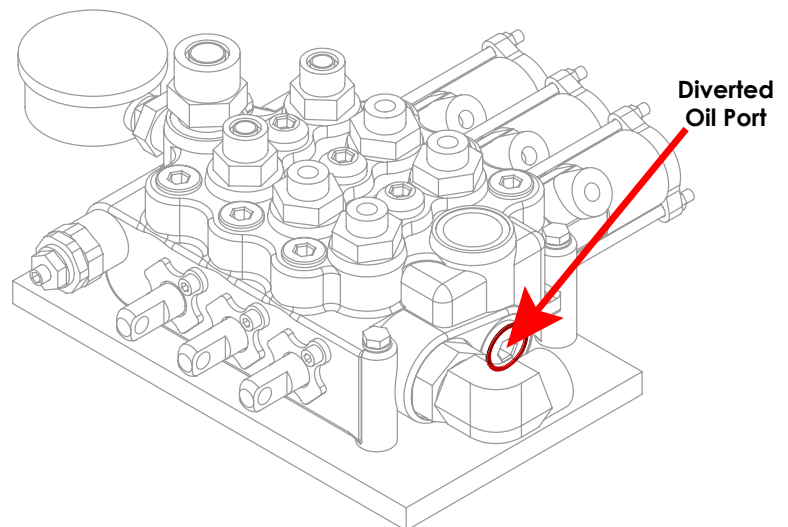
## Power Beyond VDM8 Valve

These instructions are intended for correct installation of power beyond on a Salami VDM8 valve bank. If any hydraulic component is integrated after this valve the power beyond must be installed correctly, or serious damage may incur to the hydraulic system.

1. Remove cover/access plug to reveal the power beyond access point. Can also be used as the Return/Tank port.
2. Install 3/8" straight thread pipe plug (PN 5597) into lower portion of cavity to activate the power beyond feature. Use thread sealer (tape sealers not recommended).



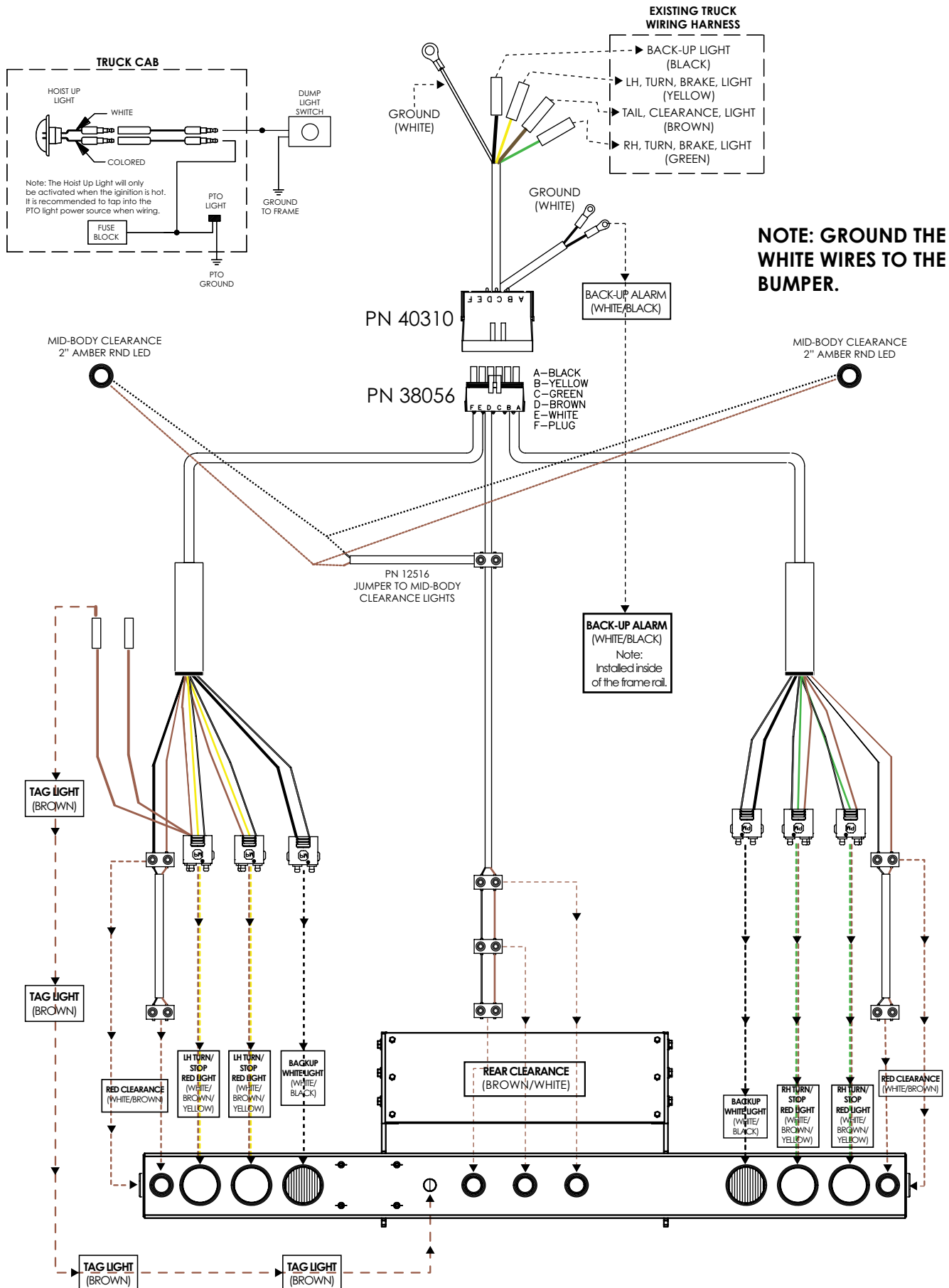
3. The Power Beyond feature is now activated and will divert oil to alternate system via the port shown.



### Notes:

- The return/tank line must be connected to the top or the side port, labeled "T".
- Using the return line to run auxiliary equipment will directly result in a failure and will not in any circumstance be covered under warranty.
- A standard Stellar® Hooklift will have 6 hydraulic lines attached to the valve. With Power Beyond activated, they will have 7 hydraulic lines attached to the valve.

# Step 9: Route Electrical Components

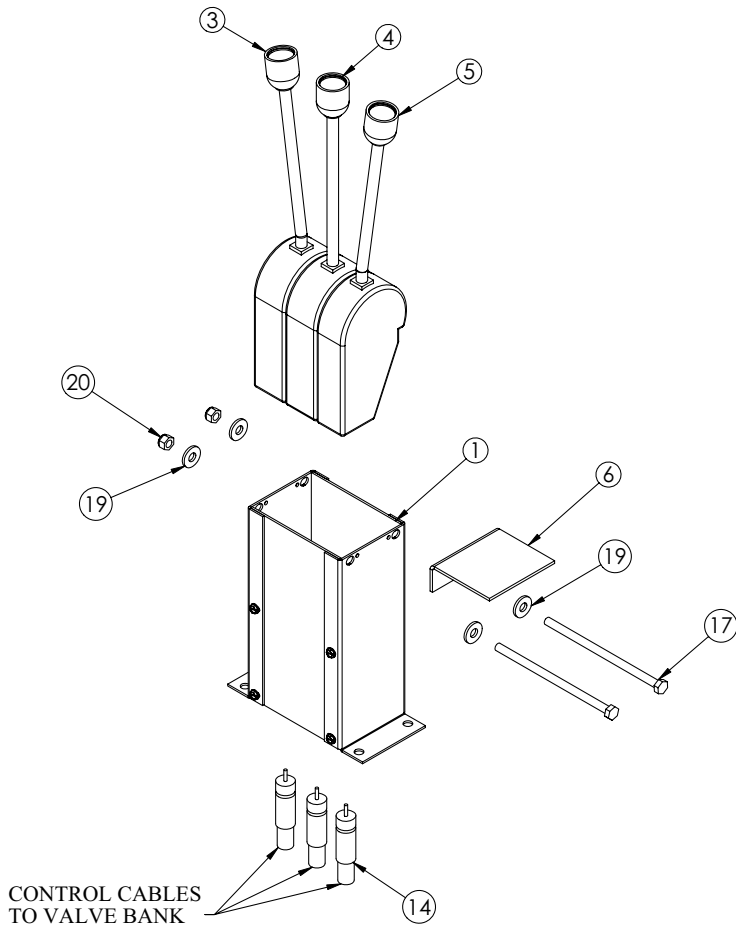


# Step 10: Install cab and PTO controls.

- Use PTO brand specific installation instructions.
- For cab controls, see controller assembly drawings for details:

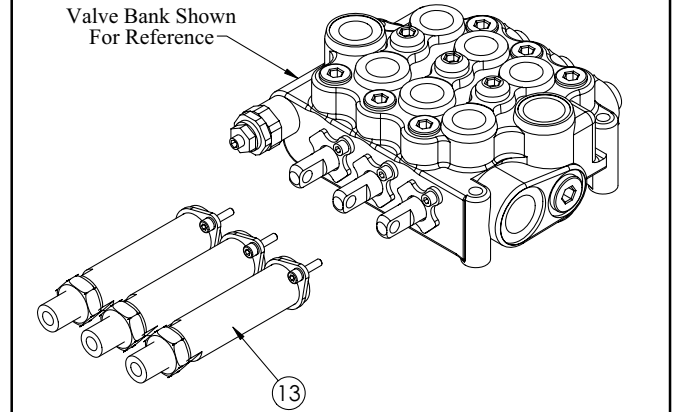
## Cable Controls

### In Cab Installation



	2 SECTION	3 SECTION
<b>96 INCH</b>	PN 55534	PN 54746
<b>144 INCH</b>	PN 55540	PN 54747
<b>192 INCH</b>	PN 55541	PN 54748

### At Valve Installation



ITEM	PART	DESCRIPTION	QTY.
1	38351	VALVE CTRL CONSOLE 3LEVER RVC (3 Section Only)	1
1	37470	VALVE CTRL CONSOLE 2LEVER RVC (2 Section Only)	1
3	37475	CONTROLLER CTR LOCK LEFT BEND	1
4	37476	CONTROLLER CTR LOCK NO BEND (3 Section Only)	1
5	37474	CONTROLLER CTR LOCK RIGHT BEND	1
6	25933	BRKT CONTROLLER DECAL	1
13	37469	CABLE CONN. KIT FOR VD8A/VDM8	2/3
14	37471	CONTROL CABLE 96 IN WESCON	2/3
14	37472	CONTROL CABLE 144 IN WESCON	2/3
14	37473	CONTROL CABLE 192 IN WESCON	2/3
17	20057	CAP SCR 0.31-18X6.50 HHGR5 (3 Section Only)	2
17	0491	CAP SCR 0.31-18X4.00 HHGR5 (2 Section Only)	2
19	0343	WASHER 0.31 USS FLAT ZINC	4
20	0342	NUT 0.31-18 HHGR5 NYLOC	2



# Air Controls

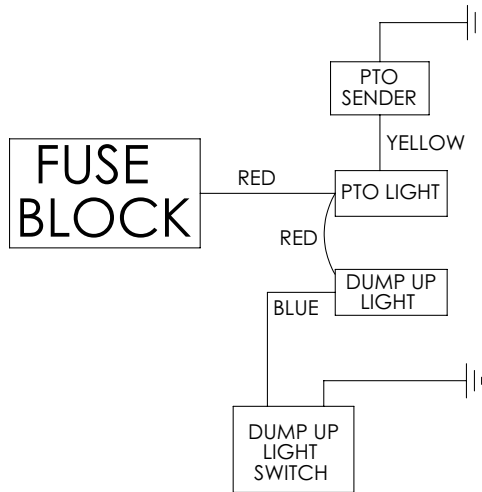
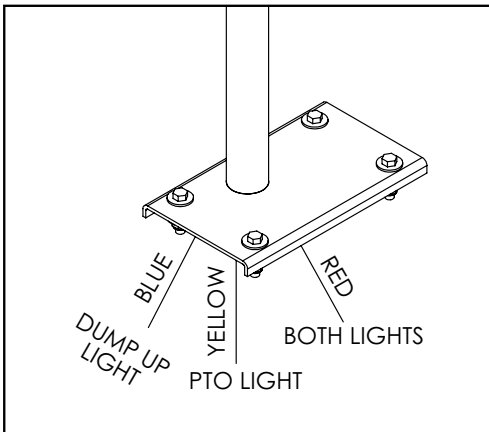
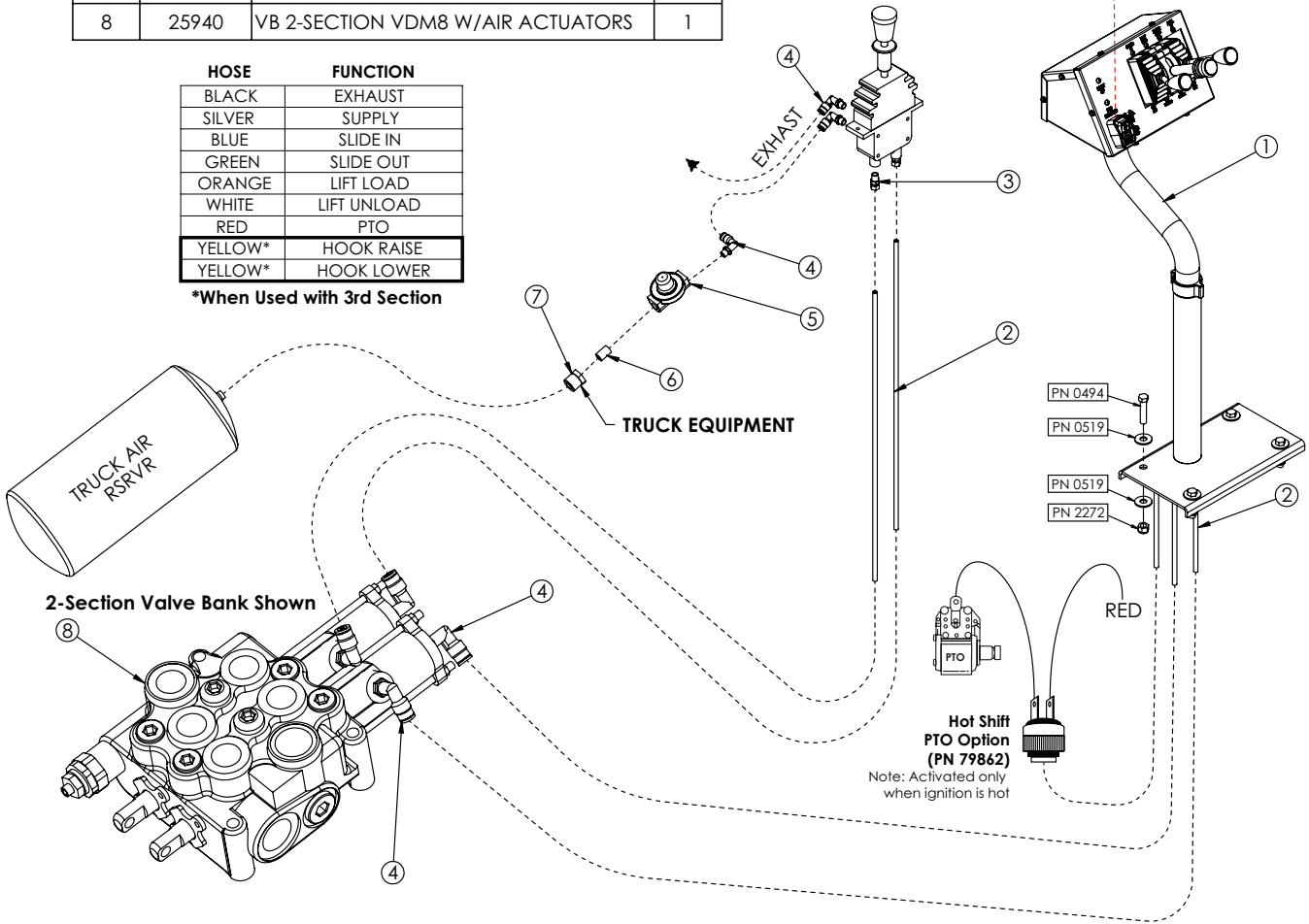
ITEM	PART	DESCRIPTION	QTY.
1	75868	CONTROLLER ASM 3 SECT AIR PED	1
2	D1810	TBE AIR SAEJ844 TYPE A .25 (RM)	4
3	45333	FTG .125NPT MALE / .25 TUBE QR KPAC	2
4	45687	FTG ADAPT PTC-MNPT 90 1/4-1/8 NI-PLATED BRASS	7
5	35211	PTO AIR REGULATOR 378414	1
6	C5934	NIPPLE 0.25XCLOSE BLK	1
7	C1065	BUSHING 0.50X0.25 BLK	1
8	25940	VB 2-SECTION VDM8 W/AIR ACTUATORS	1

**PTO SWITCH**  
**AIR - 62976 (Standard)**  
**ELECTRIC\* - PN 63142 (Optional)**

\* Note: When using PN 63142, an adapter plate (PN 63143) is required.

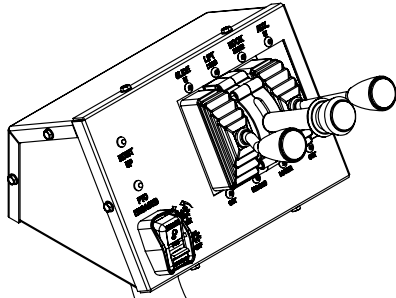
HOSE	FUNCTION
BLACK	EXHAUST
SILVER	SUPPLY
BLUE	SLIDE IN
GREEN	SLIDE OUT
ORANGE	LIFT LOAD
WHITE	LIFT UNLOAD
RED	PTO
YELLOW*	HOOK RAISE
YELLOW*	HOOK LOWER

**\*When Used with 3rd Section**



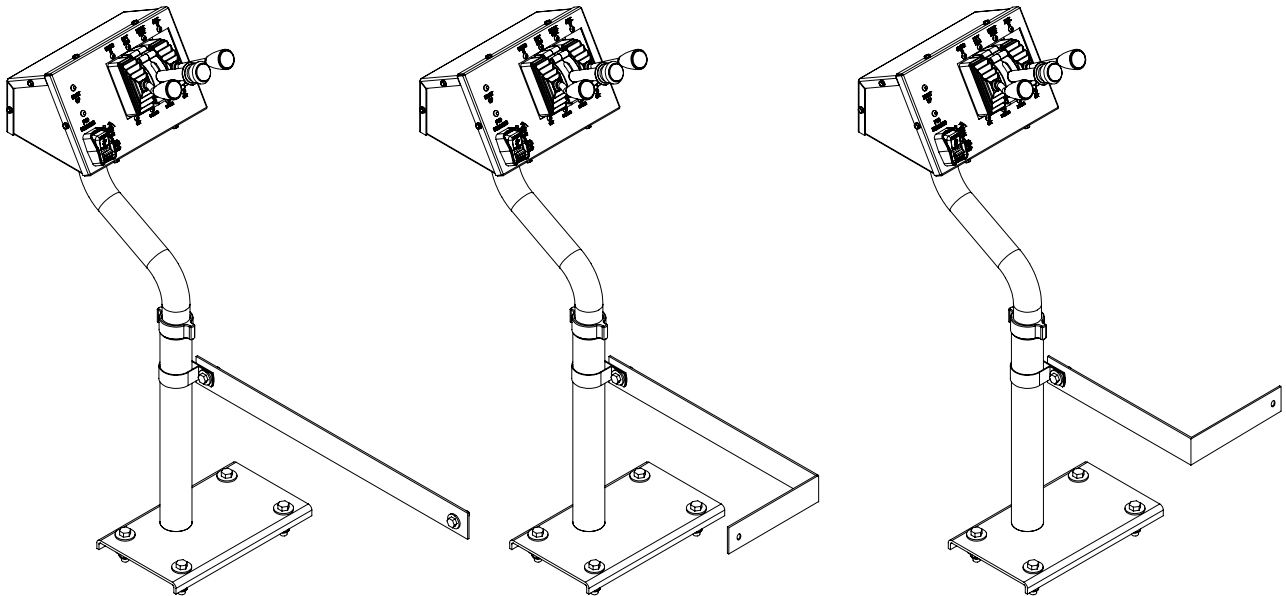
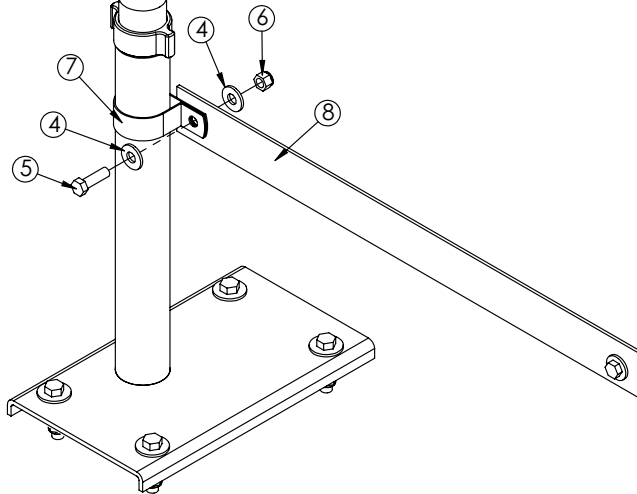
**NOTE: THE HOIST UP LIGHT WILL ONLY BE ACTIVATED WHEN THE IGNITION IS HOT. IT IS RECOMMENDED TO TAP INTO THE PTO LIGHT POWERSOURCE WHEN WIRING.**

## Optional - Controller Pedestal Reinforcement



If the chassis floor is too thin to provide sturdy support for the controller pedestal, use the optional support hardware:

ITEM	PART	DESCRIPTION	QTY.
5	0335	CAP SCR 0.38-16X1.25 HHGR5	2
6	0347	NUT 0.38-16 HHGR5 NYLOC	2
7	CLAMP	CLAMP 2.00 BLK VINYL	1
8	BRACKET	BRKT 10GAX2.00X24.00	1



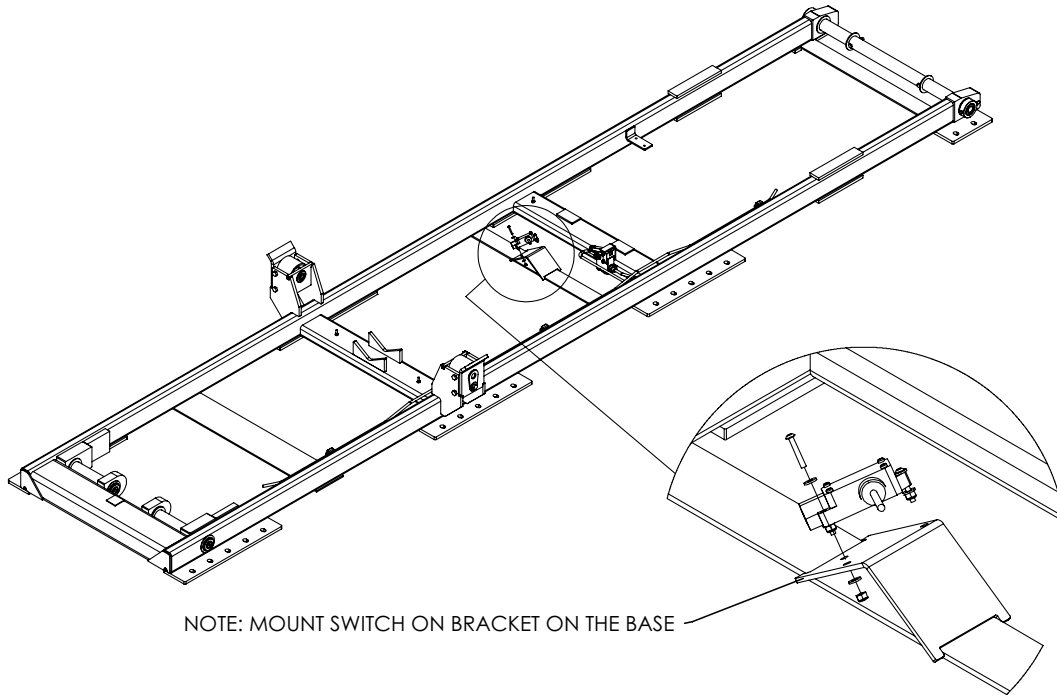
**Note:** The bracket can be bent, cut, trimmed, etc to allow fastening to the structure under the passenger seat.

# Step 11: Install mud flaps and fenders.

See brand specific installation instructions.

# Step 12: Install Hoist Up Light Sensor - PN 83115

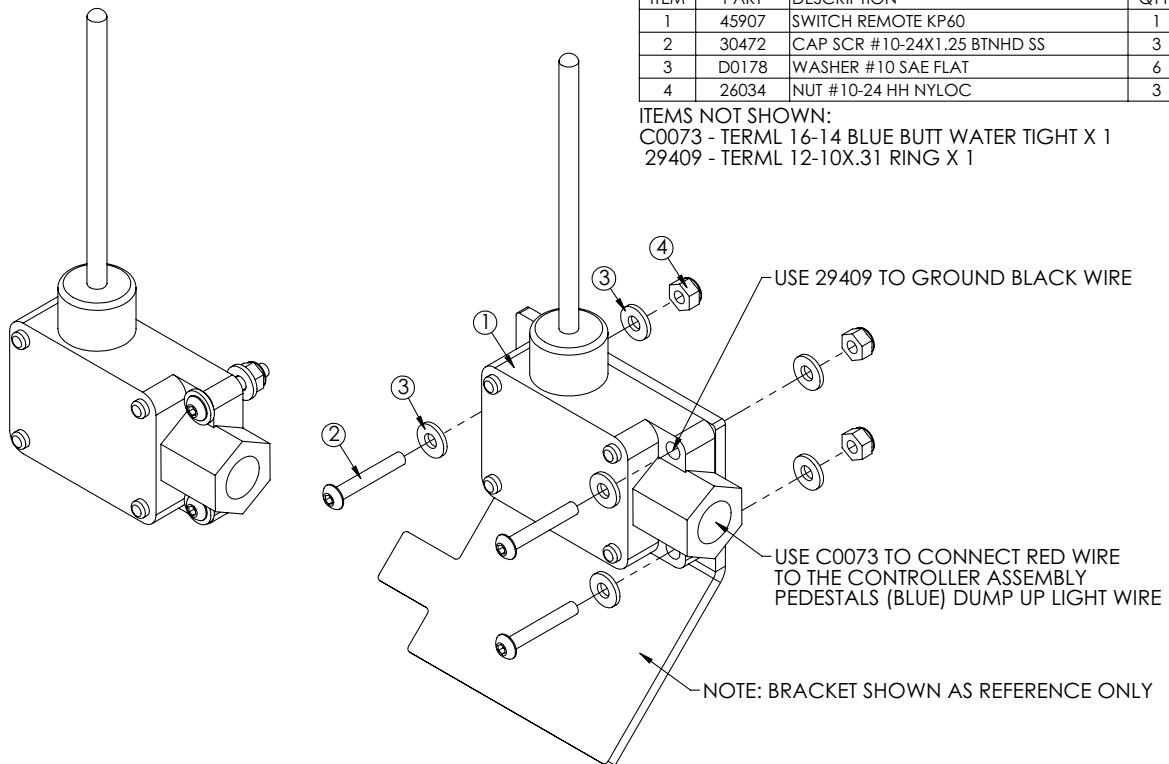
Install the hoist up light sensor onto the base of the hooklift as shown:



NOTE: MOUNT SWITCH ON BRACKET ON THE BASE

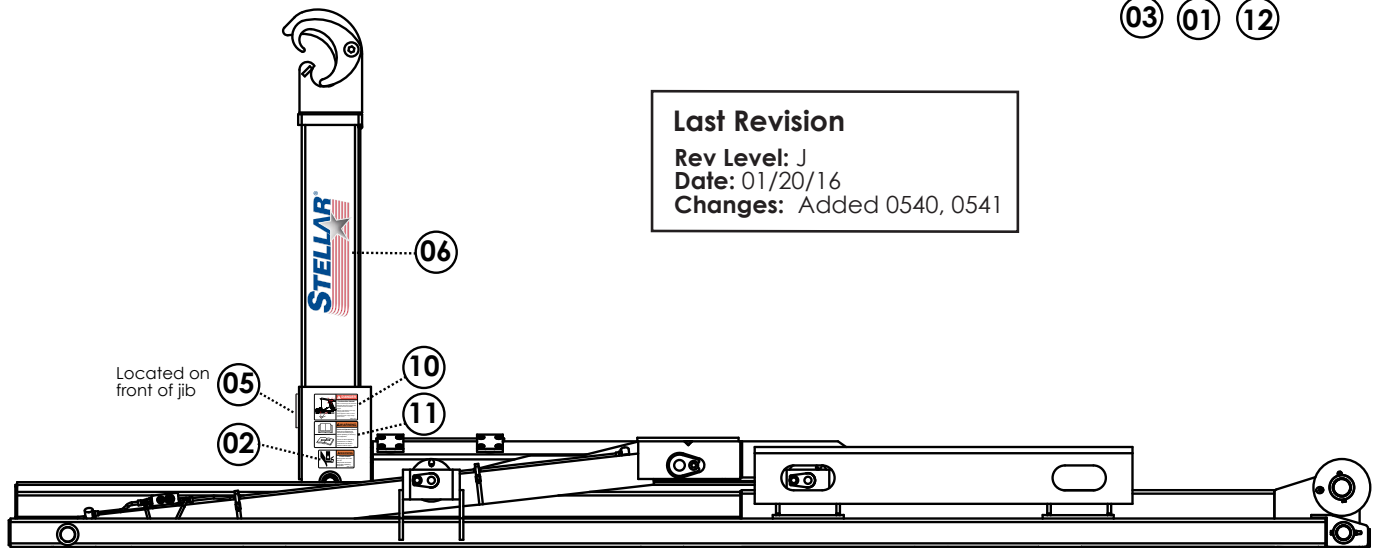
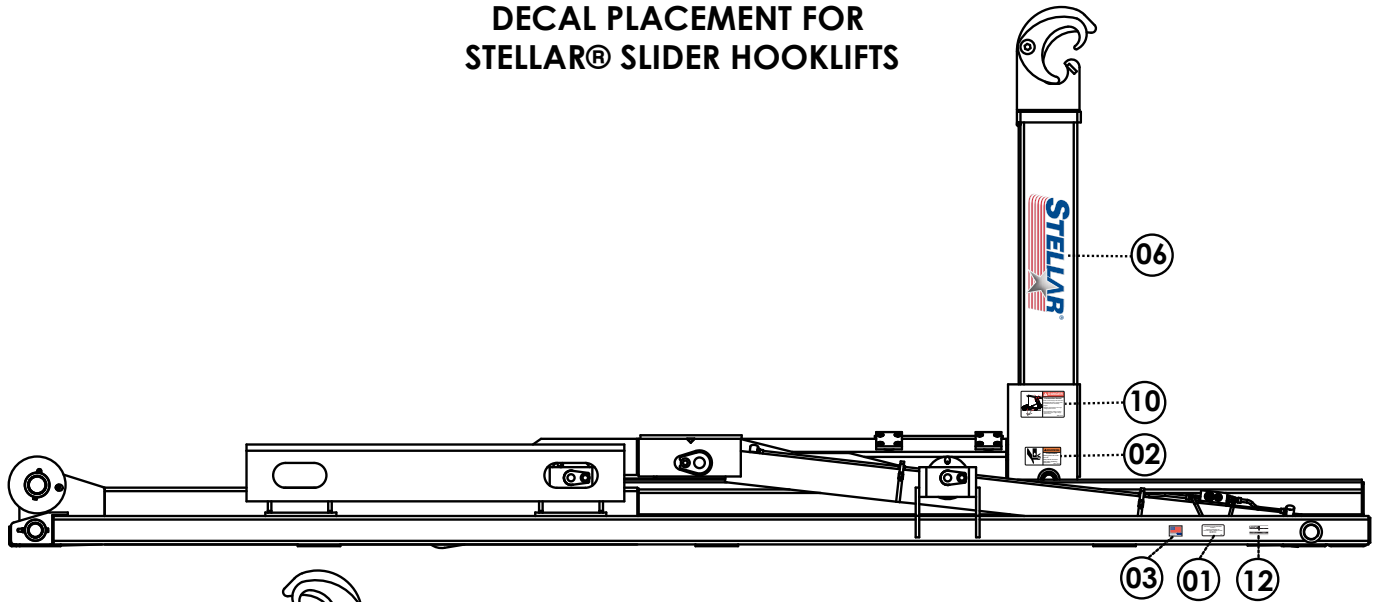
ITEM	PART	DESCRIPTION	QTY.
1	45907	SWITCH REMOTE KP60	1
2	30472	CAP SCR #10-24X1.25 BTNHD SS	3
3	D0178	WASHER #10 SAE FLAT	6
4	26034	NUT #10-24 HH NYLOC	3

ITEMS NOT SHOWN:  
 C0073 - TERML 16-14 BLUE BUTT WATER TIGHT X 1  
 29409 - TERML 12-10X.31 RING X 1



# Step 13: Apply Decals

## DECAL PLACEMENT FOR STELLAR® SLIDER HOOKLIFTS



**Last Revision**  
 Rev Level: J  
 Date: 01/20/16  
 Changes: Added 0540, 0541

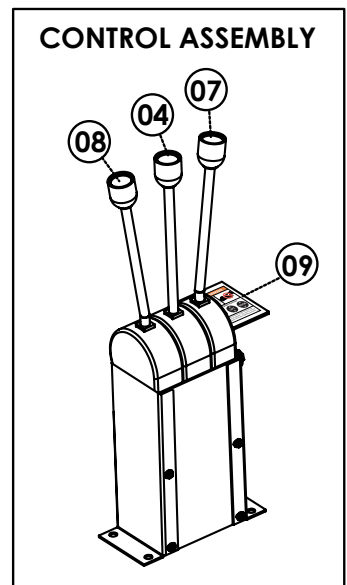
### PN 31827

ITEM	PART NUM	DESCRIPTION	QTY
01	4214	DECAL CONTACT STELLAR	1
02	25627	DECAL WARNING CRUSH	2
03	35234	DECAL STELLAR MADE IN THE USA	1
04	39211	DECAL HOOKLIFT LEVER LIFT	2
05	45955	DECAL WARNING HOOK HEIGHT MATCH	1
06*	52681	DECAL STELLAR LOGO 6.00X16.50	3
07	55414	DECAL HOOKLIFT LEVER HOOK (IF APPLICABLE)	2
08	55754	DECAL HOOKLIFT LEVER SLIDE	2
09	55755	DECAL SLIDER CONTROLS	1
10	55832	DECAL DANGER ELECTROCUTION HOOK	2
11	68024	DECAL WARNING UNTRAINED OPERATOR	1
12**	C5942	PLATE STELLAR SERIAL	1
13***	79983	DECAL DANGER ELECTROCUTION FRONT BUMPER	1
13***	0540	DECAL AMBER REFLECTOR 3.00 ROUND	2
14***	0541	DECAL RED REFLECTOR 3.00 ROUND	4

\* Extra QTY 1 shipped loose.

\*\* This item not included in decal kit.

\*\*\* This decal not shown.

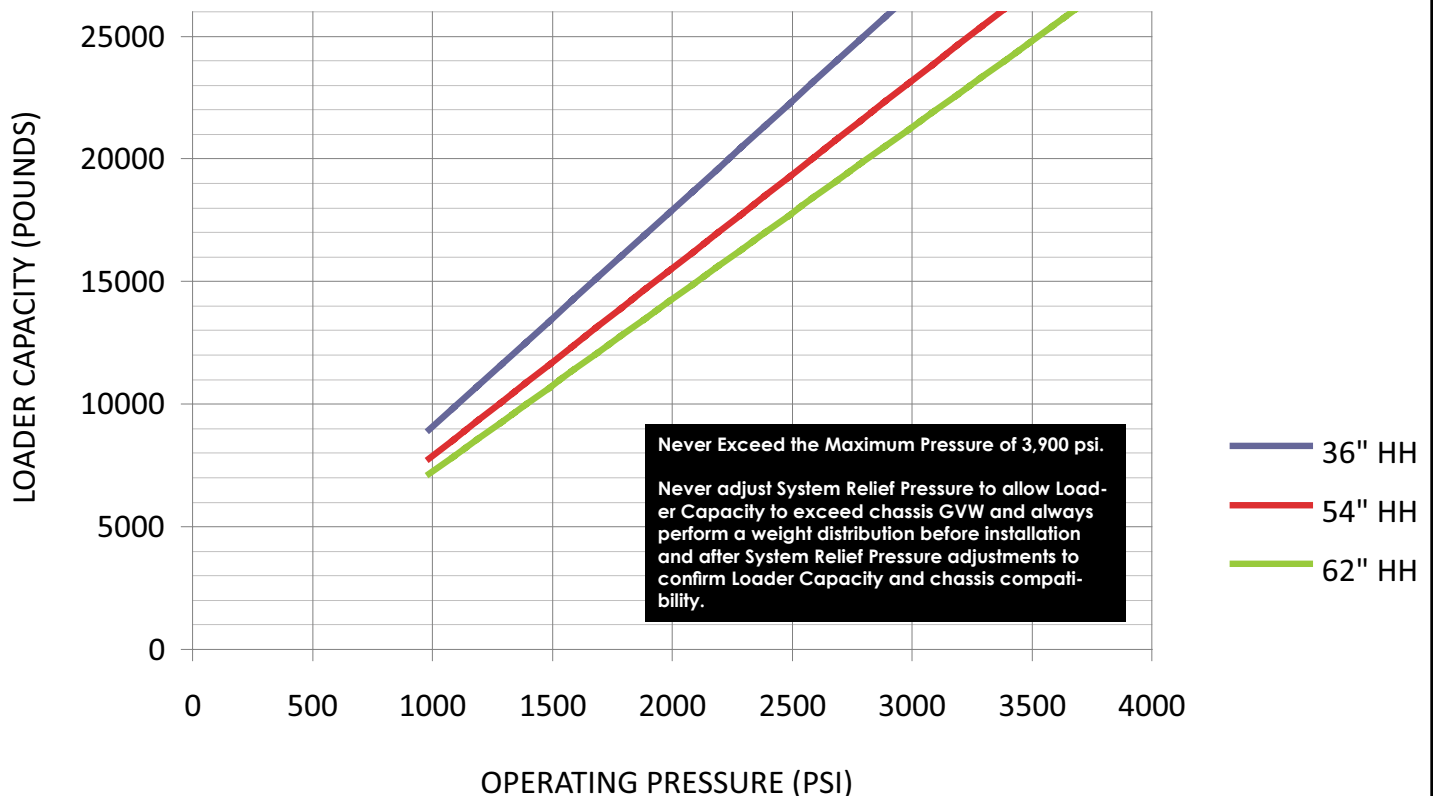


## Step 14: Fill reservoir and activate hydraulic flow.

- Fill reservoir to site gauge, within 3" from the top (Roughly 25 Gallons). Note: ISO 32 hydraulic oil is recommended.
- When connections are secure, activate hydraulic flow by opening the ball valve on the bottom of the reservoir. This will allow oil to flow from the reservoir to the pump.

## Step 15: Operate hooklift.

- **⚠ WARNING** Stellar® Hooklift operators must conform to the qualifications specified in the *Slider Hooklift Safety, Operation, Maintenance, Troubleshooting Manual*. Read and understand all manuals and safety signs before operating or servicing this equipment.
- Bleed the air out of the hydraulic system.
- Check the hydraulic oil level and add oil if needed. When checking hydraulic oil level, make certain that **all system cylinders** are fully retracted.
- Calibrate dump light system.
- Be sure to check all clearances.
- Set/check relief pressure no higher than 3900 PSI (See procedure on next page).

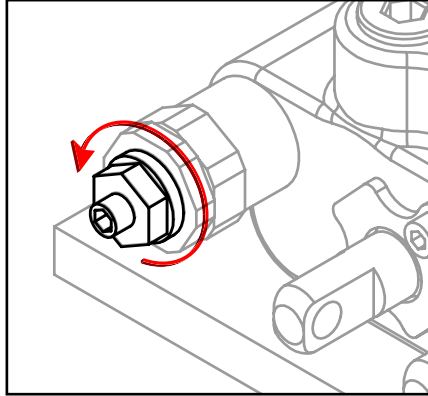


## Set System Relief Pressure

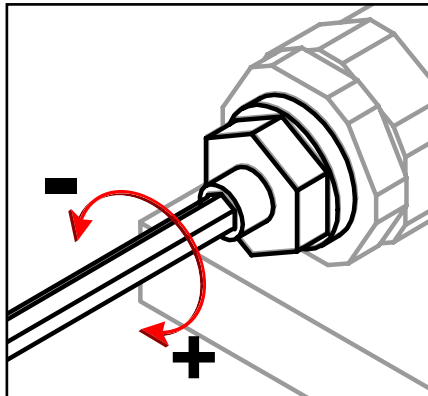
1. Engage the PTO. Run the PTO at 1200 RPM.

2. Push the control lever labeled 'lift' until the boom bottoms out. Keep pushing the lever forward until the pressure is set.

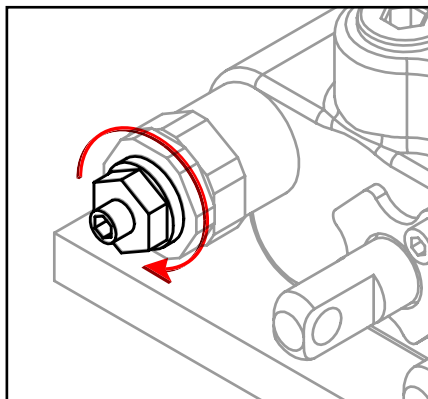
3. Locate the main relief valve and release the jam nut using a 13 mm wrench:



4. Adjust the system relief pressure using 4 mm allen wrench. Clockwise increases pressure, counter clockwise decreases pressure:



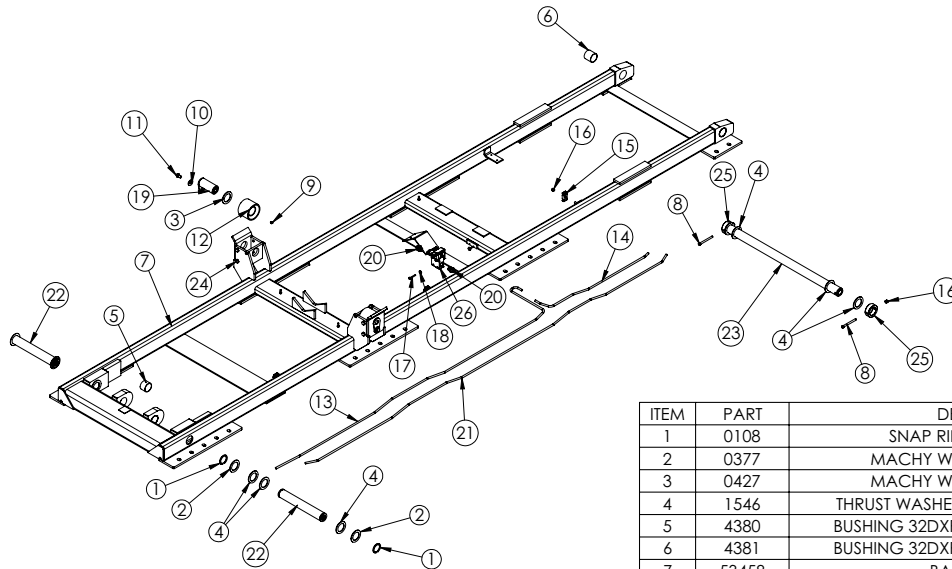
5. Once system pressure is set, tighten the jam nut to lock system pressure. Permanent thread lock should not be used:



6. Release all functions and disengage the PTO. Snap tamper cap into position over the jam nut. The break away clip will be destroyed if the cap is removed.

# Chapter 3 - Assembly Drawings

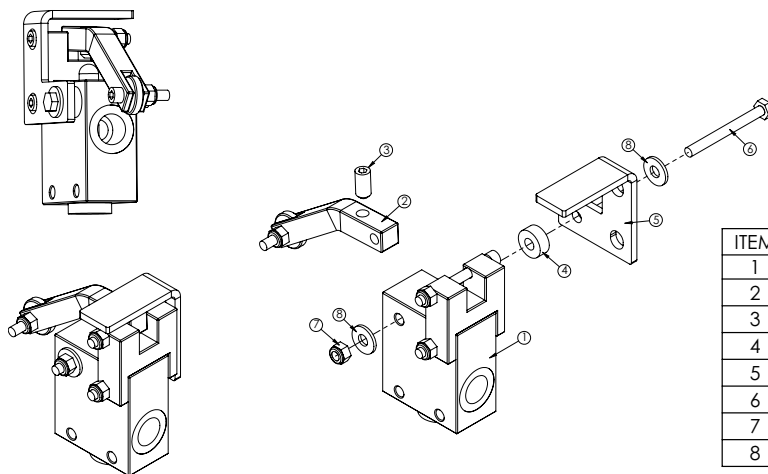
## Base Assembly - PN 53457



ITEM	PART	DESCRIPTION	QTY
1	0108	SNAP RING 2.00 7200-200	4
2	0377	MACHY WASHER 2.00ID 14GA	4
3	0427	MACHY WASHER 2.00ID 10GA	2
4	1546	THRUST WASHER 2.01DIA UHMW .12THK	10
5	4380	BUSHING 32DXR24 2.00X1.50 GARLOCK	2
6	4381	BUSHING 32DXR32 2.00X2.00 GARLOCK	4
7	53458	BASE SLIDER 26	1
8	C0953	CAP SCR 0.38-16X4.00 HHGR5	2
9	c1592	ZERK 1/8 NPT STRAIGHT	2
10	0352	WASHER 0.50 USS FLAT	2
11	C0990	CAP SCR 0.50-13X0.75 HHGR5	2
12	45373	ROLLER 2.00X4.00X3.00 OUTSIDE S160	2
13	54602	TUBE ASM 0.38 SLIDER26 JIB RETRACT VALVE YZ	1
14	54603	TUBE ASM 0.38X32.60 SLIDER26 JIB RETRACT YZ	1
15	8622	CLAMP HOSE/TUBE AG-2	6
16	0347	NUT 0.38-16 HHGR5 NYLOC	5
17	0332	CAP SCR 0.25-20X1.75 HHGR5	2
18	0340	WASHER 0.25 USS FLAT	2
19	54522CR	PIN TEAR DROP 2.00X4.38 W/ZERK	2
20	57734	FTG 8-6 MBSPP-MFS STRAIGHT	2
21	55491	TUBE ASM 0.38 SLIDER26 JIB EXTEND YZ	1
22	30215CR	PIN 2.00X13.63 SR	2
23	24617CR	PIN 2.00X36.44	1
24	66945	CAP SCR 0.50-13X0.50 PLASTIC - BLACK	8
25	22764	COLLAR 2.01X3.00X1.00 W/HOLE	2
26	86130	VALVE PLUNGER VILLA HYD NORMALLY CLOSED W/35 DEG ARM	1

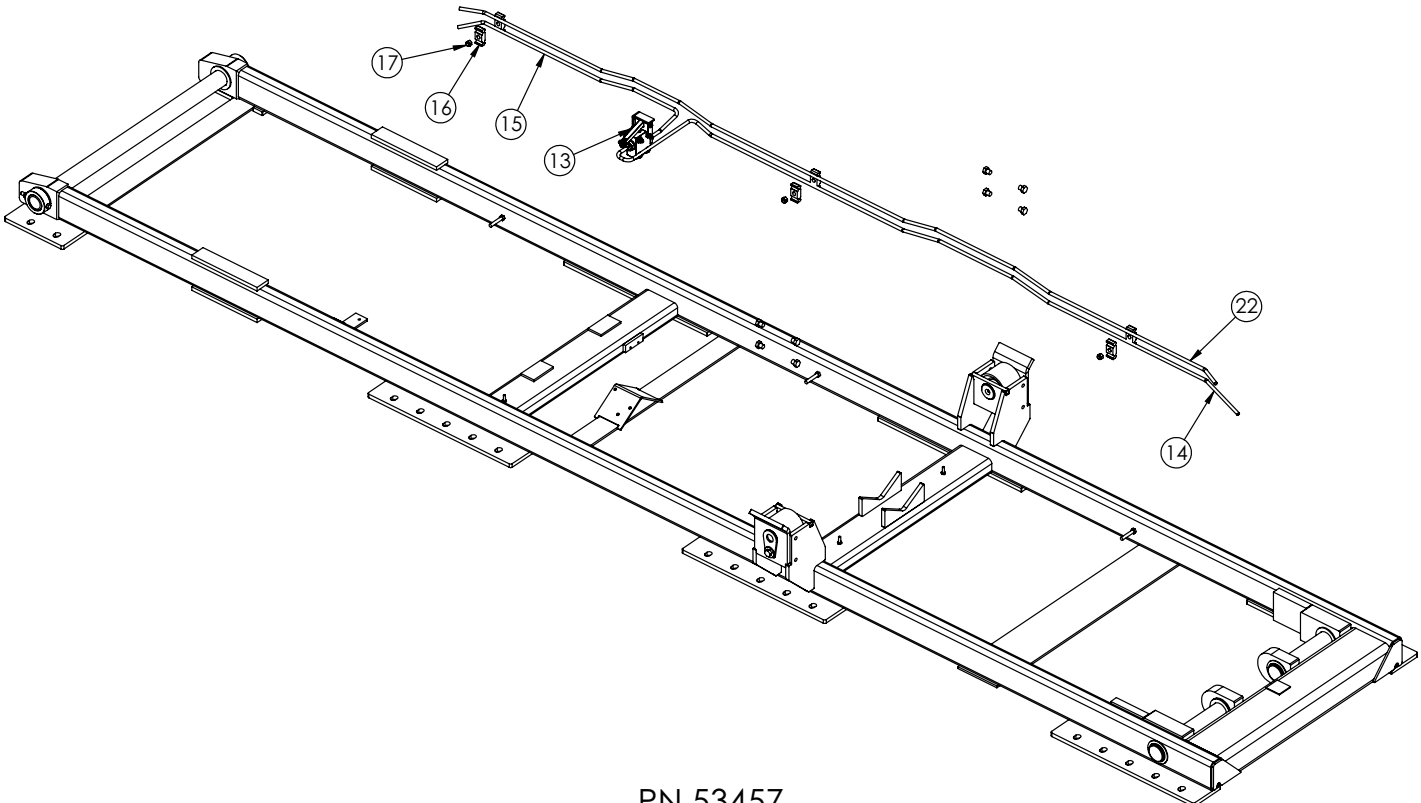
NOTE: ROLLERS 45373 TAPPER FACES TOWARD INSIDE

## Plunger Valve Assembly - PN 86130



ITEM	PART	DESCRIPTION	QTY.
1	53853	VALVE PLUNGER VILLA HYD NORMALLY CLOSED	1
2	86126	LEVER ARM ASM 35 DEG	1
3	86161	SET SCREW 0.38-16X0.75 W/ RED PATCH	1
4	60348	COLLAR 0.31X0.75X0.31 UHMW	1
5	60470	BRKT PLUNGER VILLA HYD VALVE	1
6	0339	CAP SCR 0.25-20X2.50 HHGR5	1
7	0333	NUT 0.25-20 HHGR5 NYLOC	1
8	0340	WASHER 0.25 USS FLAT	2

# Base Assembly - PN 53457 continued...

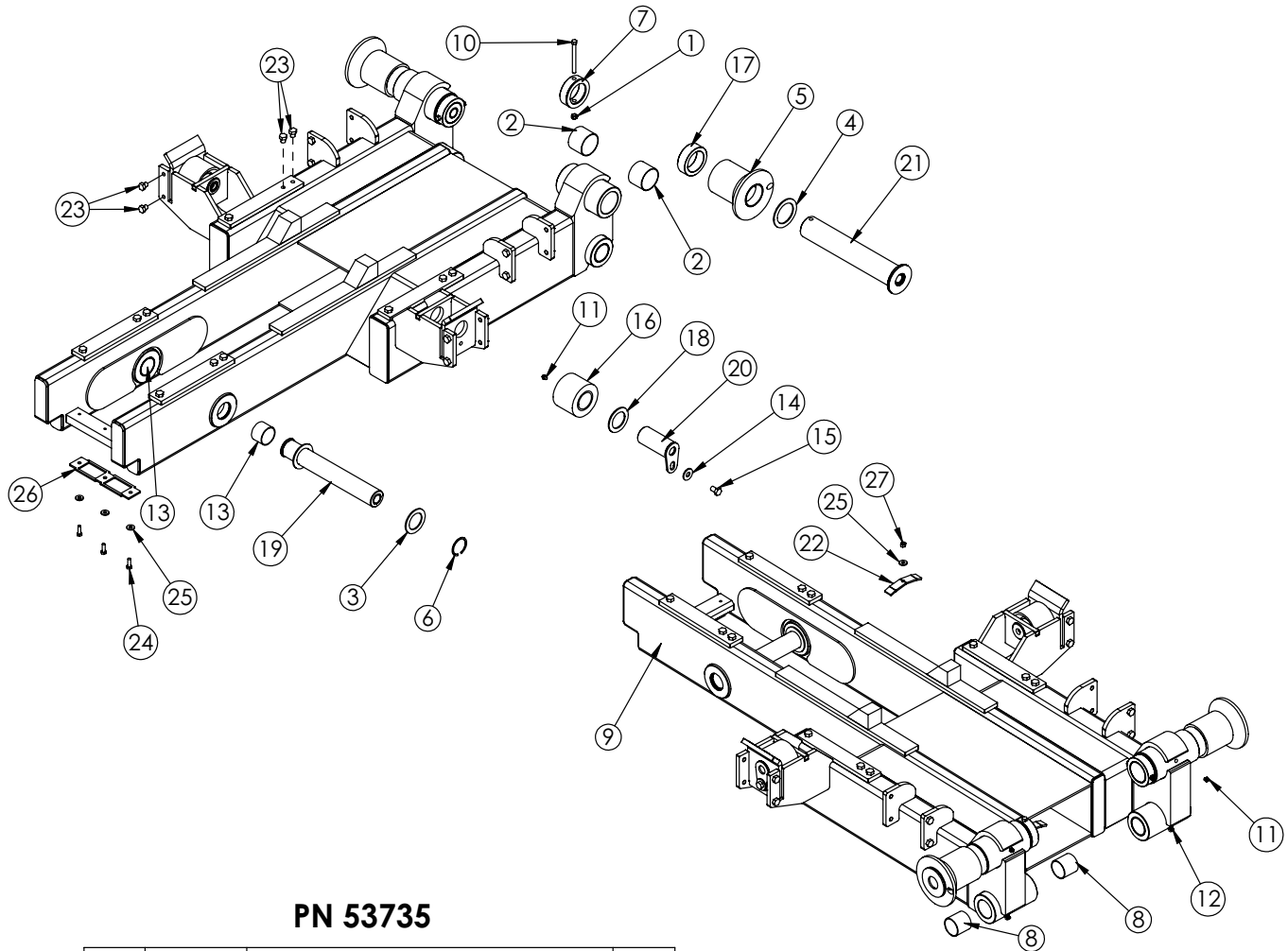


PN 53457

ITEM	PART	DESCRIPTION	QTY
13	53853	VALVE PLUNGER VILLA HYD NORMALLY CLOSED	1
14	54602	TUBE ASM 0.38 SLIDER26 JIB RETRACT VALVE YZ	1
15	54603	TUBE ASM 0.38X32.60 SLIDER26 JIB RETRACT YZ	1
16	8622	CLAMP HOSE/TUBE AG-2	6
17	0347	NUT 0.38-16 HHGR5 NYLOC	5
22	55491	TUBE ASM 0.38 SLIDER26 JIB EXTEND YZ	1



# Dump Assembly - PN 53735

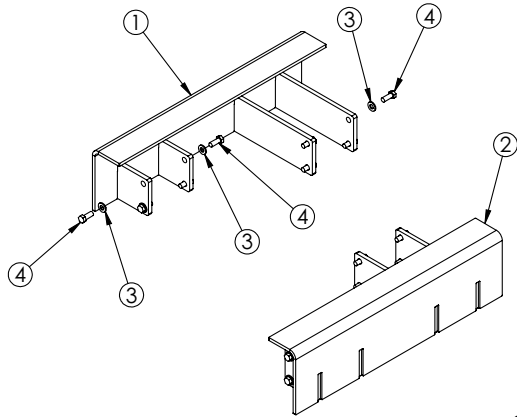


## PN 53735

ITEM	PART	DESCRIPTION	QTY.
1	0347	NUT 0.38-16 HH NYLOC	2
2	0635	BUSHING 40DXR32 GARLOCK	4
3	1546	THRUST WASHER 2.01DIA UHMW .12THK	2
4	1547	THRUST WASHER 2.51DIA UHMW .12THK	4
5	21496PC	ROLLER 2.50X4.00X3.81X6.00 POWDERCOAT YEL	2
6	2257	SNAP RING INSIDE 2.00	2
7	23930PC	COLLAR 2.51X3.50X1.00	2
8	4381	BUSHING 32DXR32 2.00X2.00 GARLOCK	4
9	53734	DUMP SLIDER26 W/LATCH MOUNTS	1
10	C0953	CAP SCR 0.38-16X4.00 HHGR5	2
11	c1592	ZERK 1/8 NPT STRAIGHT	4
12	C1597	ZERK 1/8 NPT 90 DEG	2
13	4380	BUSHING 32DXR24 2.00X1.50 GARLOCK	2
14	0352	WASHER 0.50 USS FLAT ZINC	2
15	C0990	CAP SCR 0.50-13X0.75 HHGR5	2
16	45373	ROLLER 2.00X4.00X3.00 OUTSIDE SI60	2
17	54649	COLLAR 2.51X3.50X1.13 UHMW	2
18	0427	MACHY WASHER 2.00ID 10GA	2
19	53737ZP	PIN 2.00X13.81	1
20	54522ZP	PIN TEAR DROP 2.00X4.38 W/ZERK	2
21	54648ZP	PIN WLDMT 2.50X14.19	2
22	3381PC	HOSE CLAMP BOLT ON 1210 CRANE	2
23	66945	CAP SCR 0.50-13X0.50 PLASTIC - BLACK	28
24	C0922	CAP SCR 0.31-18X1.00 HHGR5	3
25	0343	WASHER 0.31 USS FLAT ZINC	5
26	57479PC	PLATE LATCH BAR SLIDER26	1
27	0342	NUT 0.31-18 HHGR5 NYLOC	2

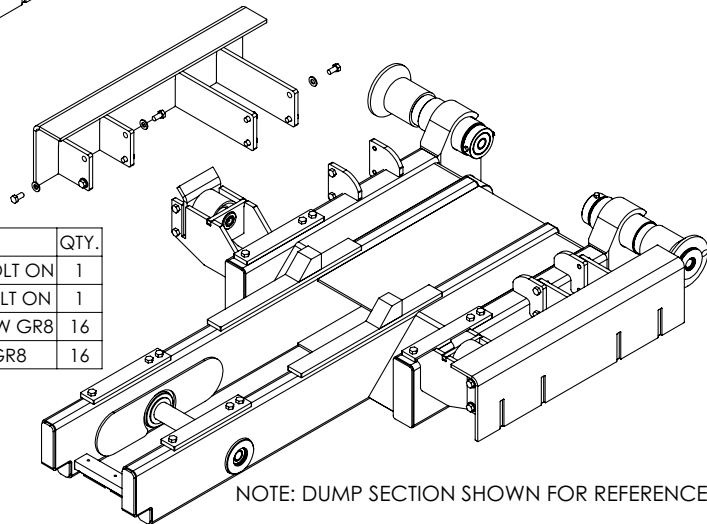
NOTE: PORT RELIEF VDM8 2500 PSI PART NUMBER 26182  
TO BE PLACED IN THE EXTEND SIDE OF THE JIB VALVE SECTION

# Outside Latch Assembly - PN 55358



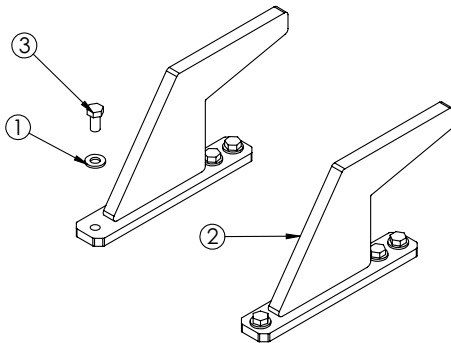
**PN 55358**

ITEM NO.	PART NUMBER	DESCRIPTION	QTY.
1	54812	LATCH WLDMT OUTSIDE CS BOLT ON	1
2	54816	LATCH WLDMT OUTSIDE SS BOLT ON	1
3	D0790	WASHER 0.50 SAE FLAT YELLOW GR8	16
4	10666	CAP SCR 0.50-13X1.25 HHGR8	16



NOTE: DUMP SECTION SHOWN FOR REFERENCE

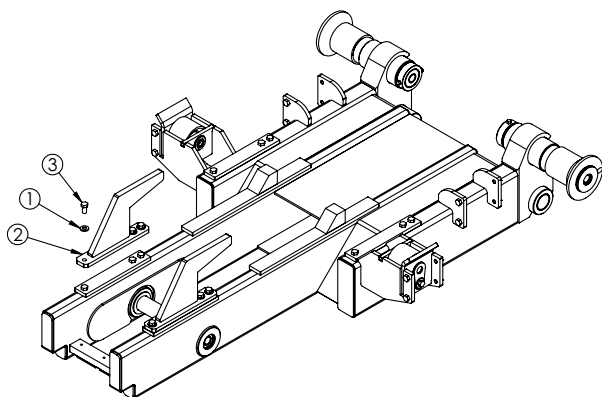
# Inside Latch Assembly - PN 54216



**PN 54216**

ITEM	PART	DESCRIPTION	QTY.
1	D0790	WASHER 0.50 SAE FLAT YELLOW GR8	6
2	54740	LATCH INSIDE BOLT ON	2
3	10172	CAP SCR 0.50-13X1.00 HHGR8	6

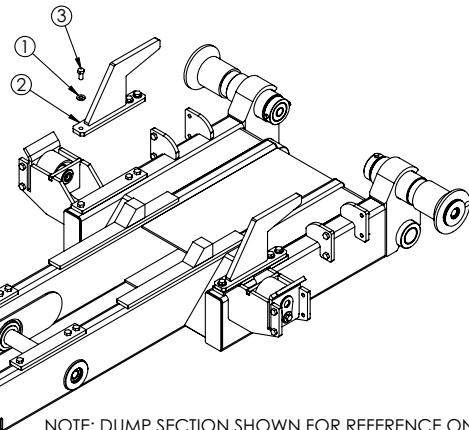
## FRONT MOUNT 84", 96", 110" SKIDS



NOTE: DUMP SECTION SHOWN FOR REFERENCE ONLY

OR

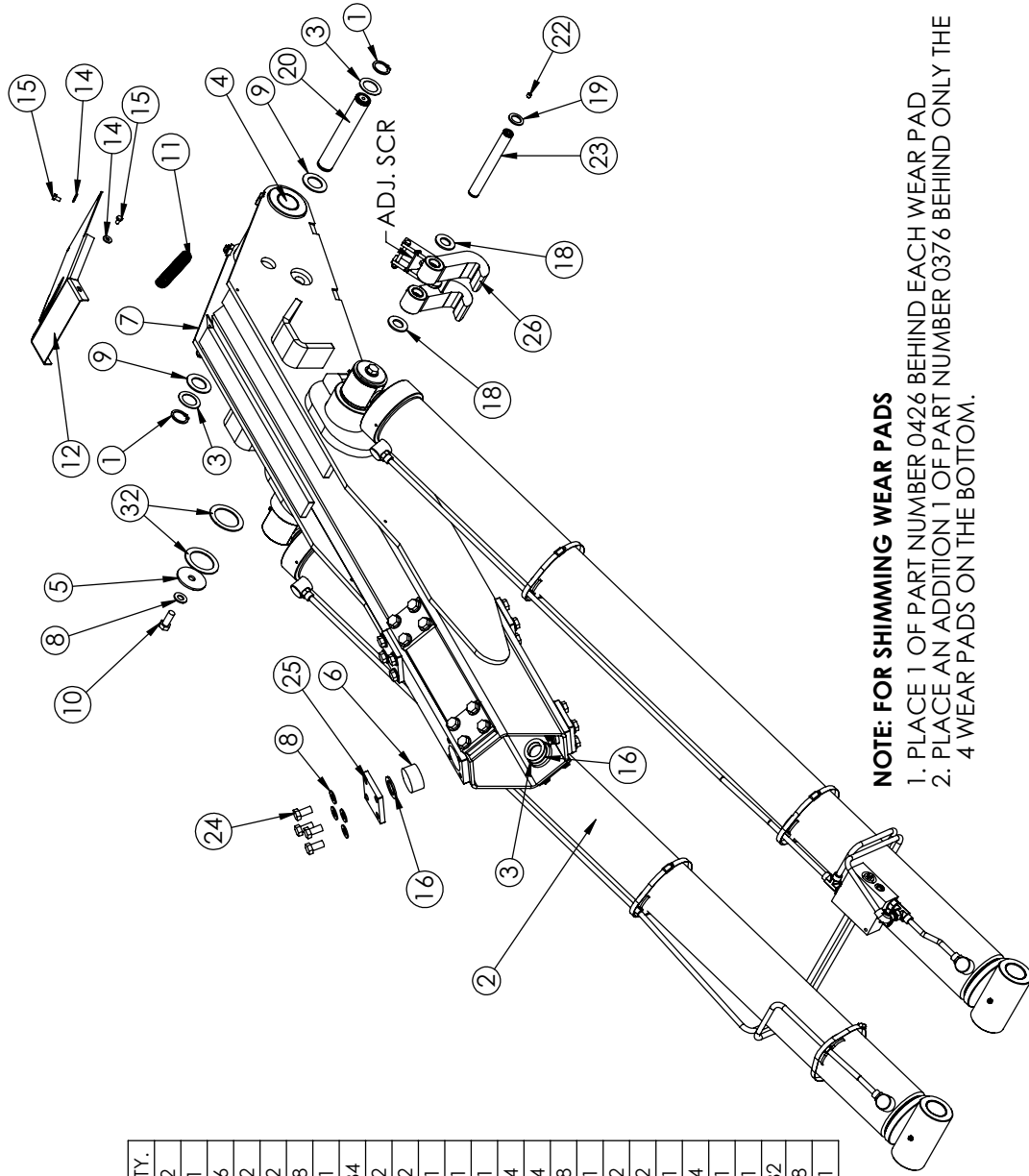
## REAR MOUNT 146" SKIDS



NOTE: DUMP SECTION SHOWN FOR REFERENCE ONLY

# Secondary Assembly - PN 53669

## PN 53669

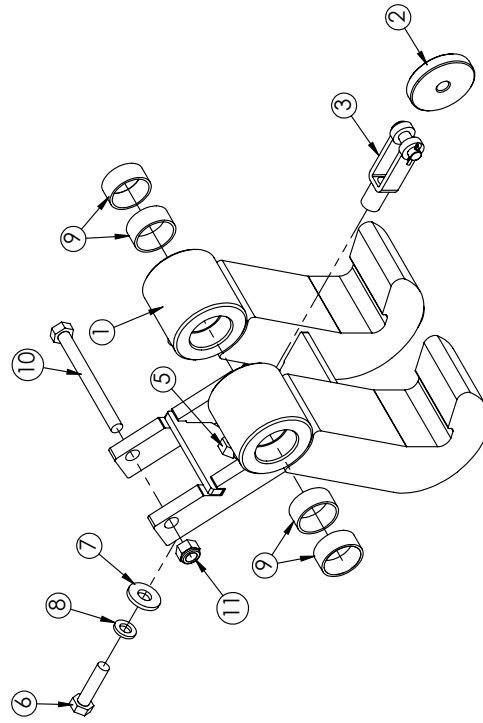
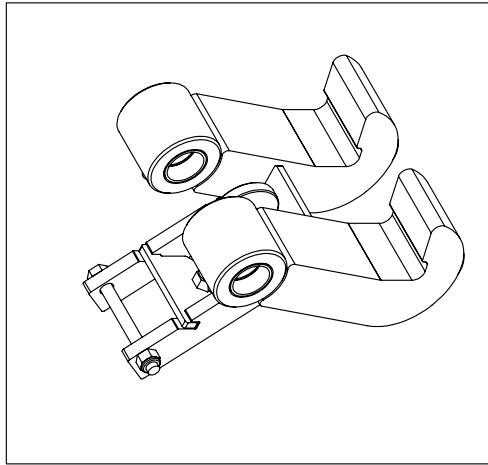


### NOTE: FOR SHIMMING WEAR PADS

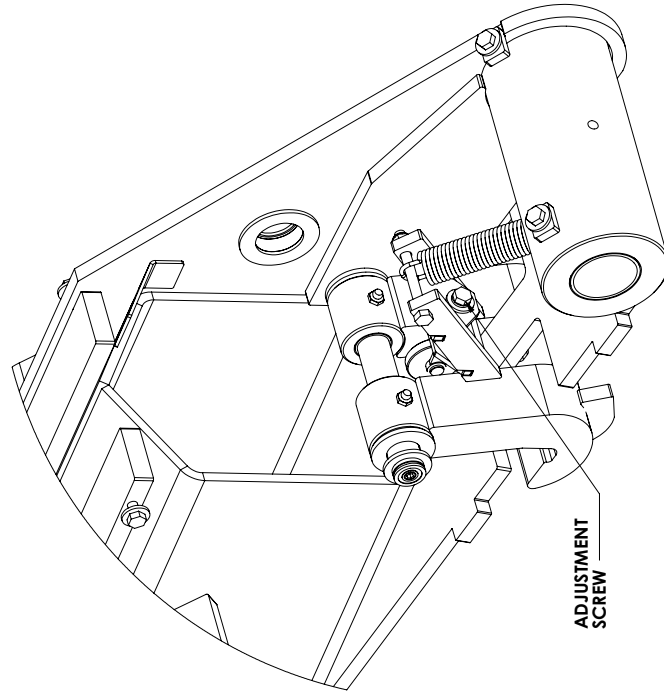
1. PLACE 1 OF PART NUMBER 0426 BEHIND EACH WEAR PAD
2. PLACE AN ADDITION 1 OF PART NUMBER 0376 BEHIND ONLY THE 4 WEAR PADS ON THE BOTTOM.

ITEM	PART	DESCRIPTION	QTY.
1	0246	SNAP RING ID 7200 150	2
2	53770	CYLINDER ASM DUAL SLIDER 26K	1
3	0376	MACHY WASHER 1.50ID 14GA	6
4	4381	BUSHING 32DXR32 2.00X2.00 GARLOCK	2
5	8454	PIN CAP 0.69X3.00X0.19 YZ	2
6	30962	WEAR PAD 2.50X1.25	8
7	53670	SECONDARY SLIDER 26	1
8	C-5902	WASHER 0.63 SAE FLAT YELLOW GR8	34
9	D0419	THRUST WASHER	2
10	0356	CAP SCR 0.63-11X1.50 HHGR8	2
11	54817	SPRING 1.00ODX0.125X4.50	1
12	54819	FORMED PLATE COVER SEC SLIDER 26	1
13	12520	NUT 0.31-18 HH NYLOC SS	1
14	0343	WASHER 0.31 USS FLAT	4
15	0484	CAP SCR 0.31-18X0.50 HHGR5	4
16	0426	MACHY WASHER 1.50ID 10GA	8
17	0488	CAP SCR 0.31-18X2.00 HHGR5	1
18	6538	WASHER 1.00 SAE FLAT YELLOW GR8	2
19	0424	MACHY WASHER 1.00ID 10GA	2
20	30961CR	PIN 1.50X9.25 SR	1
21	1547	THRUST WASHER 2.51DIA UHMW .12THK	4
22	C3397	SET SCREW 0.38-16X0.38 W/ RED PATCH	1
23	0164CR	PIN 1.00X8.38 SR	1
24	66839	CAP SCR 0.63-11X1.25 HHGR8 W/RED PATCH	32
25	54222	PLATE WEAR PAD CAP SLIDER 26	8
26	80982	DUMP LATCH ASM SLIDER26	1

# Dump Latch Assembly - PN 80982



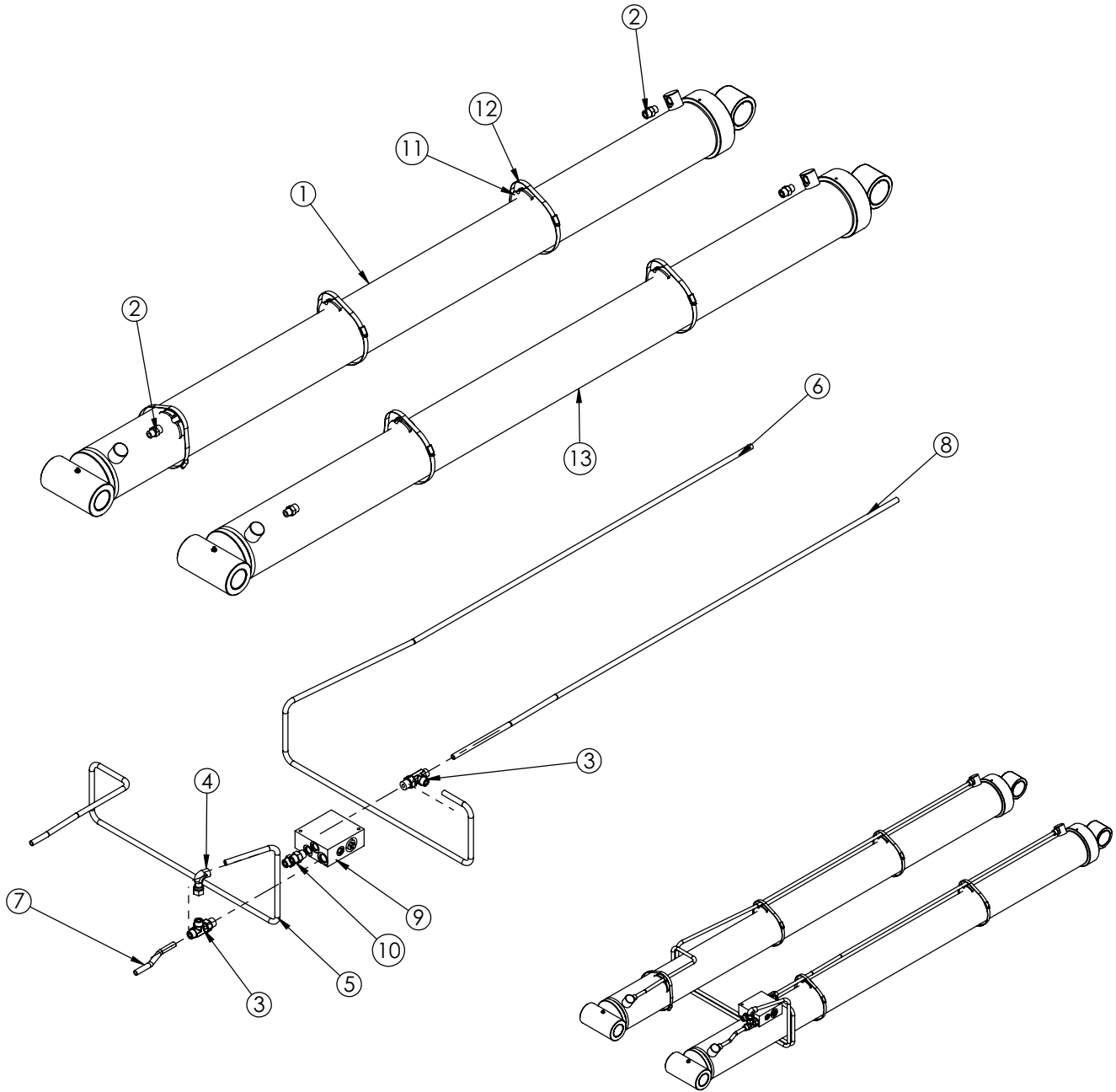
ITEM	PART	DESCRIPTION	QTY.
1	87186	DUMP LATCH W/DMT SLIDER 26	1
2	70118	ROLLER 1.75ODX0.33IDX0.31W	1
3	70056	CLEVIS ROD END 0.31X2.25 T.583K23	1
4	c.1592	ZERK 1/8 NPT STRAIGHT	2
5	0534	NUT 0.31-18 HHGR5	1
6	0485	CAP SCR 0.31-18X1.25 HHGR5	1
7	0343	WASHER 0.31 USS FLAT	1
8	0522	WASHER 0.31 LOCK	1
9	20362	BUSHING BPC16DXR08 1.00X.50	4
10	12178	CAP SCR 0.31-18X3.25 HHGR5	1
11	12520	NUT 0.31-18 HH NYLOC SS	1



**NOTE: FOR SETTING THE ADJUSTMENT SCREW**

1. THE TAB ON THE BACK OF THE JIB PUSHES ON THE SCREW TO RELEASE THE LATCHES
2. THE SCREW SHOULD BE SET SO THAT WHEN THE JIB IS FULLY RETRACTED THE LATCHES CLEAR THE DUMP LATCH BAR AND DO NOT COME IN CONTACT WITH THE BOTTOM SECONDARY PLATE

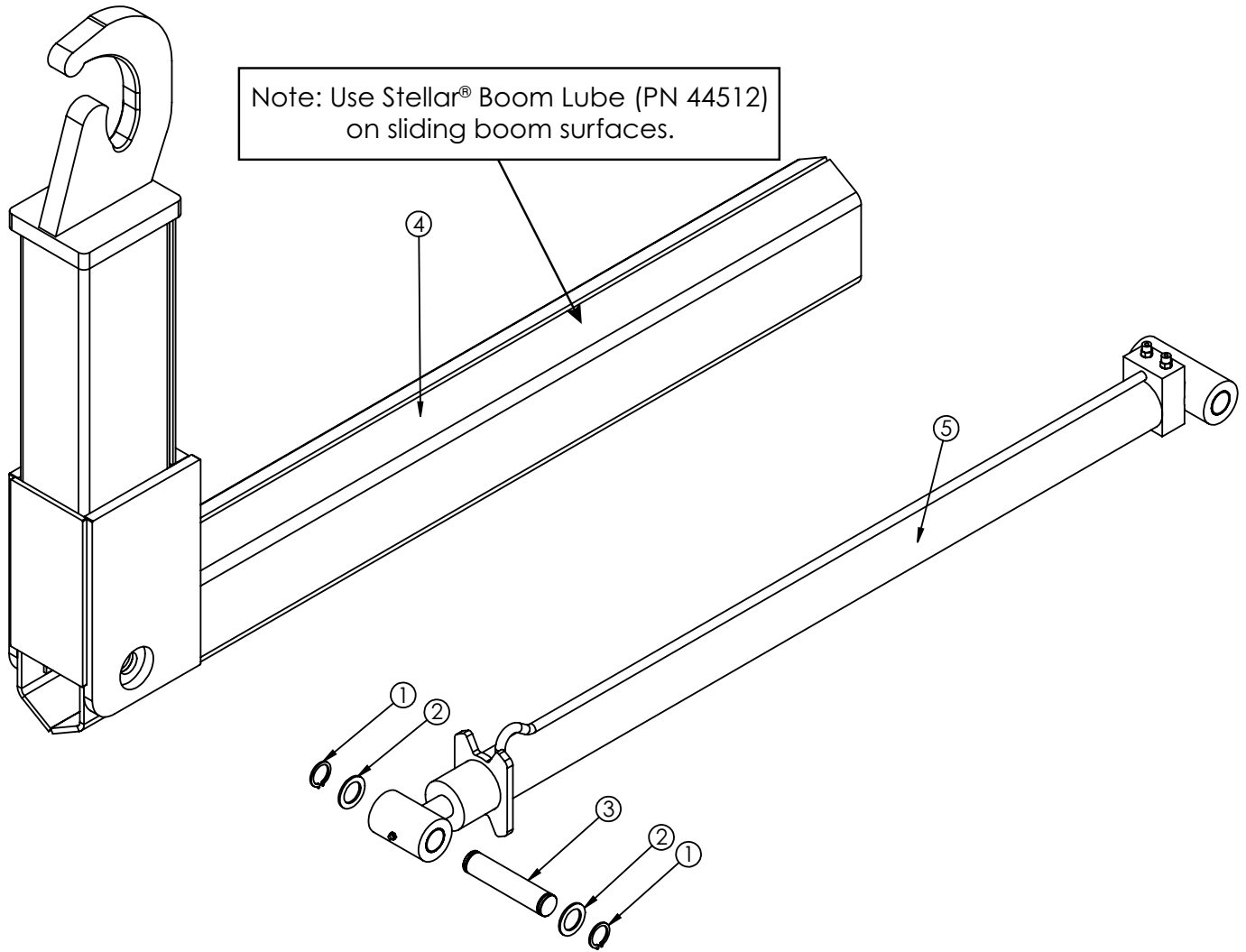
# Main Cylinder Assembly - PN 53770



## PN 53770

ITEM	PART	DESCRIPTION	QTY.
1	53447	CYLINDER 5.00X78.00	2
2	1554	FTG ADAPT 8-F5OLO-S	6
3	37179	FTG ST RUN TEE 8-10-8R5OLO	2
4	C2376	FTG ADAPT 8-C6LO-S	1
5	53773	TUBE ASM 0.50 SLIDER 26 CS EXTEND YZ	1
6	53849	TUBE ASM 0.50 SLIDER 26 CS RETRACT YZ	1
7	53847	TUBE ASM 0.50 SLIDER 26 SS EXTEND YZ	1
8	53848	TUBE ASM 0.50 SLIDER 26 SS RETRACT YZ	1
9	15995	MANIFOLD ASM DUAL T2A 5000PSI	1
10	18701	CLAMP PORT TUBE ZR518	5
11	19369	HOSE CLAMP 4.13-7.00 5416K38	5

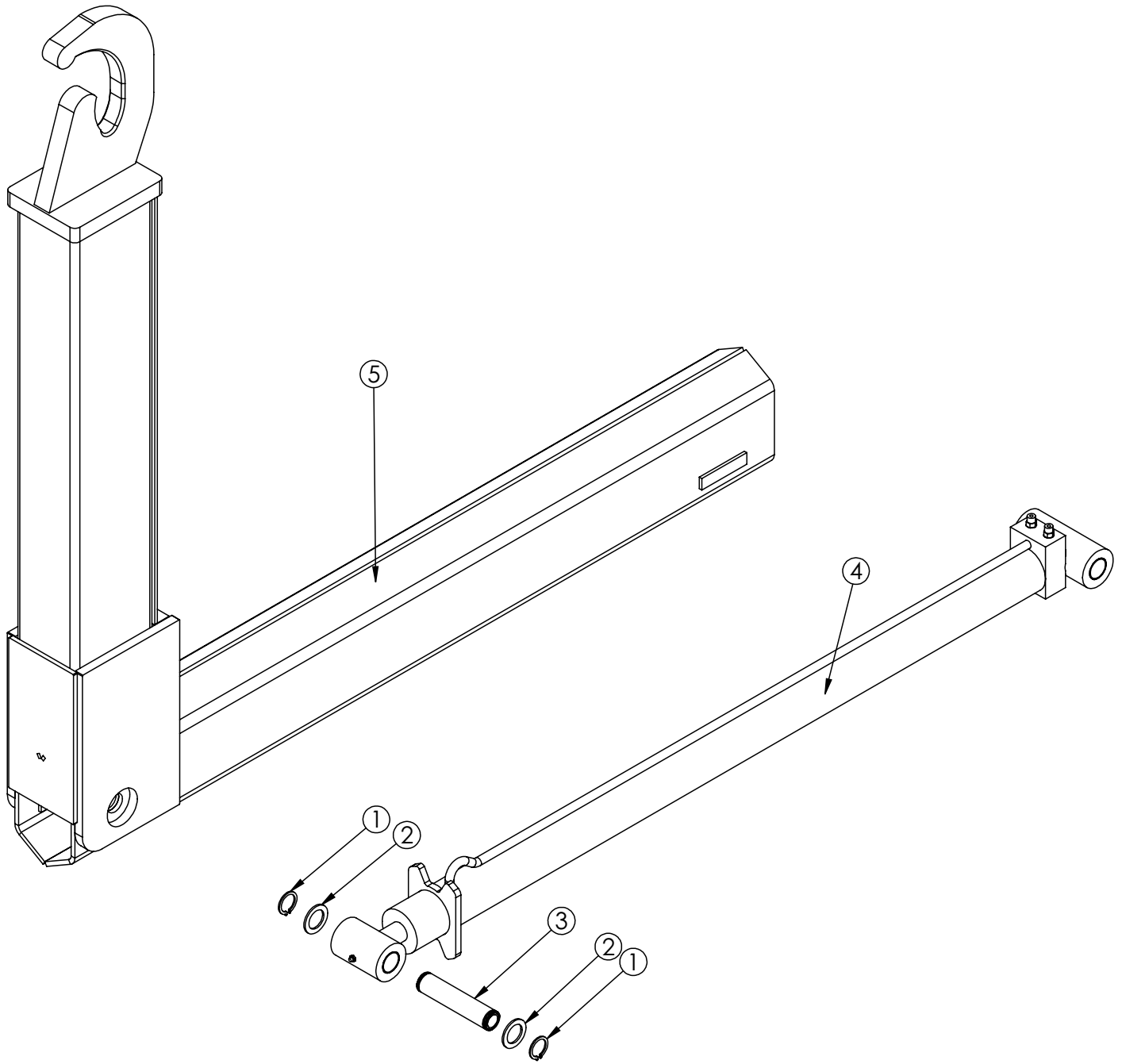
# Jib Assembly (35.63" Hook Height) - PN 53463



## PN 53463

ITEM	PART	DESCRIPTION	QTY.
1	0246	SNAP RING ID 7200 150	2
2	0426	MACHY WASHER 1.50ID 10GA	2
3	28021	PIN 1.50X7.00	1
4	53453	JIB SLIDER 26 36HH SBH	1
5	28022	CYLINDER ASM 3.00X42.00	1

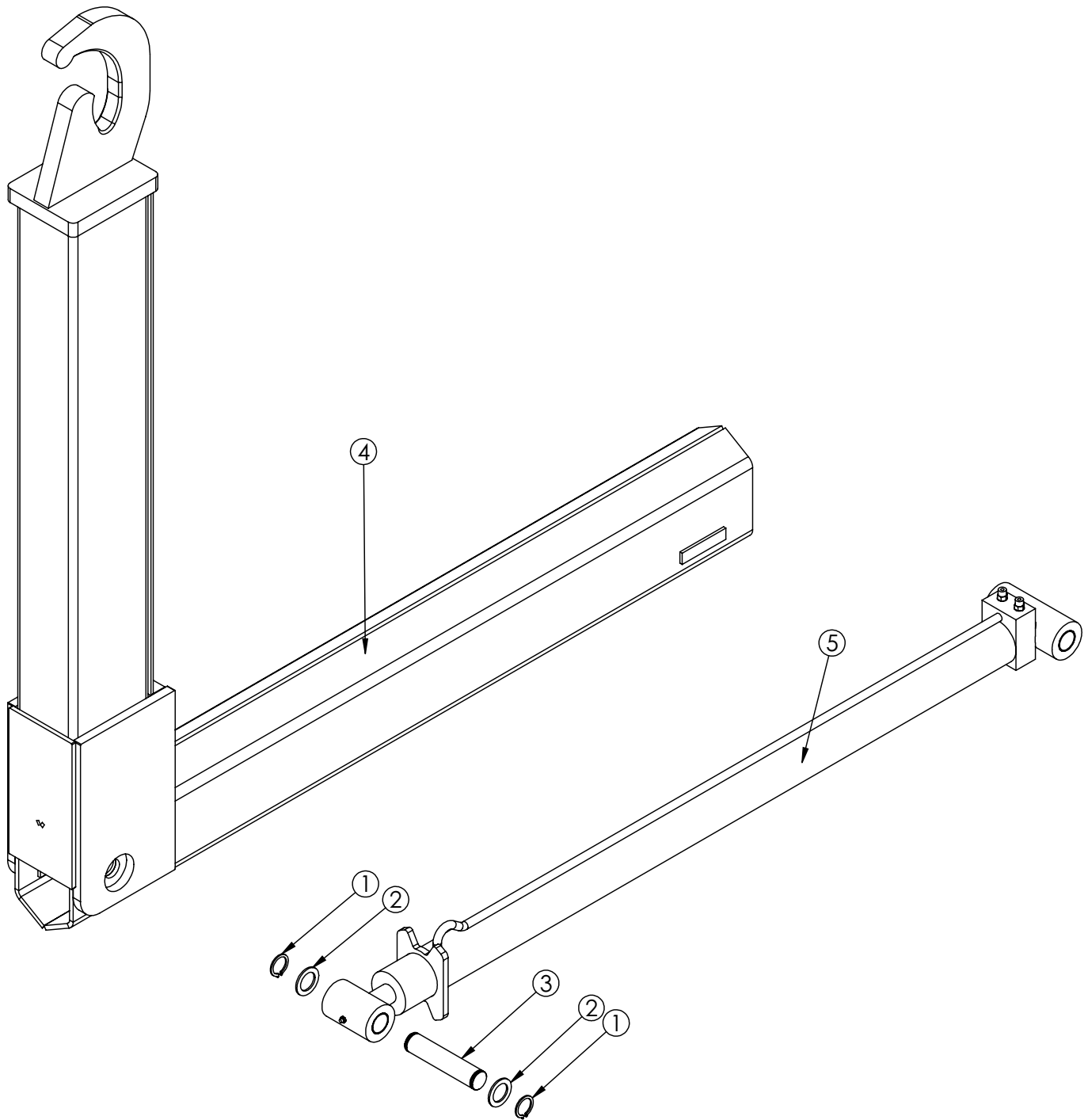
# Jib Assembly (54" Hook Height) - PN 53959



## PN 53959

ITEM	PART	DESCRIPTION	QTY.
1	0246	SNAP RING ID 7200 150	2
2	0426	MACHY WASHER 1.50ID 10GA	2
3	28021ZP	PIN 1.50X6.88 SR	1
4	28022	CYLINDER ASM 3.00X42.00	1
5	54059	JIB SLIDER 26 54HH SBH	1

# Jib Assembly (61.75" Hook Height) - PN 53960



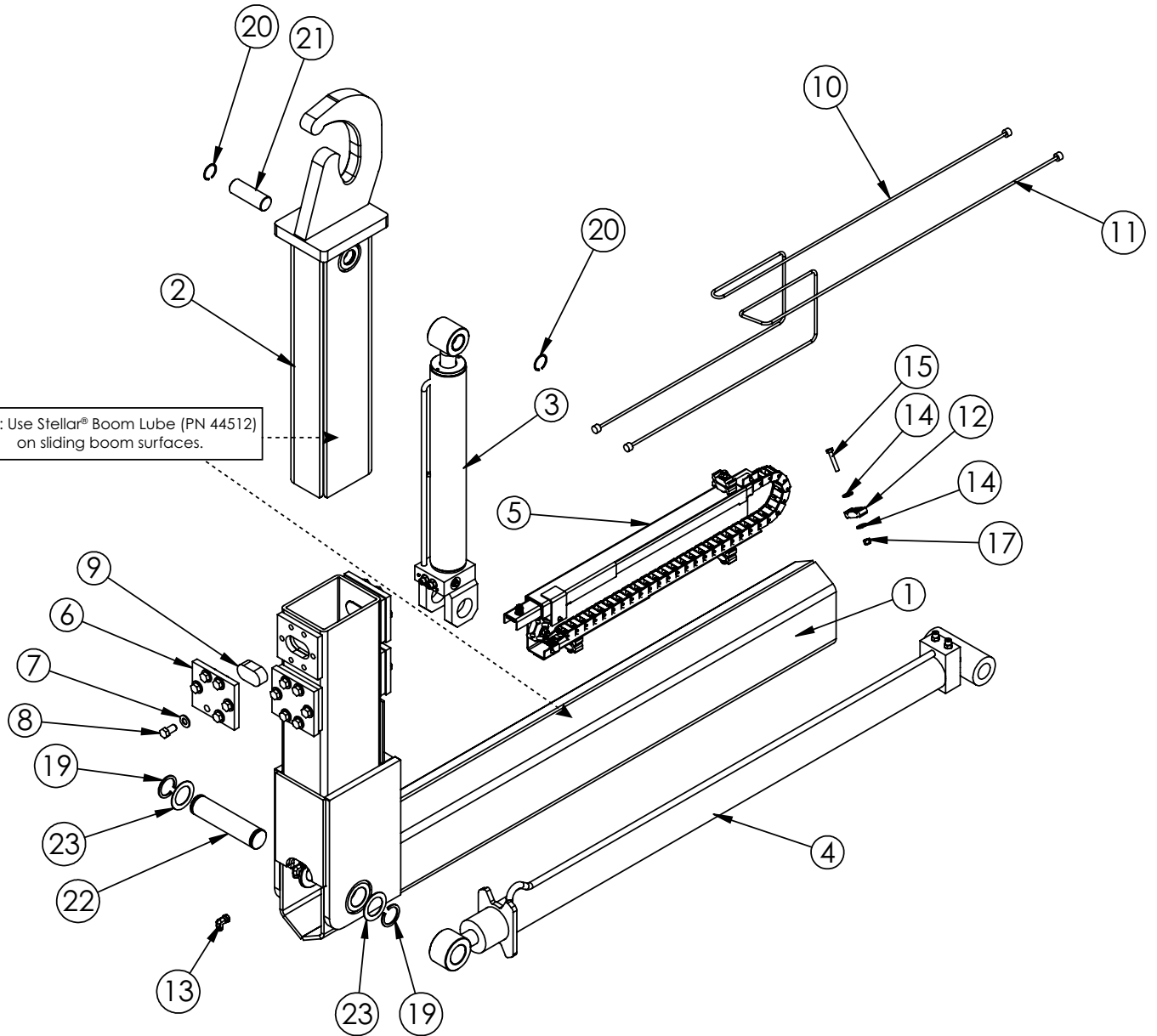
## PN 53960

ITEM	PART	DESCRIPTION	QTY.
1	0246	SNAP RING ID 7200 150	2
2	0426	MACHY WASHER 1.50ID 10GA	2
3	28021	PIN 1.50X7.00 SR SS	1
4	54060	JIB SLIDER 26 62HH SBH	1
5	28022	CYLINDER ASM 3.00X42.00	1



# Jib Assembly (35.63/54" Hook Height) - PN 53961

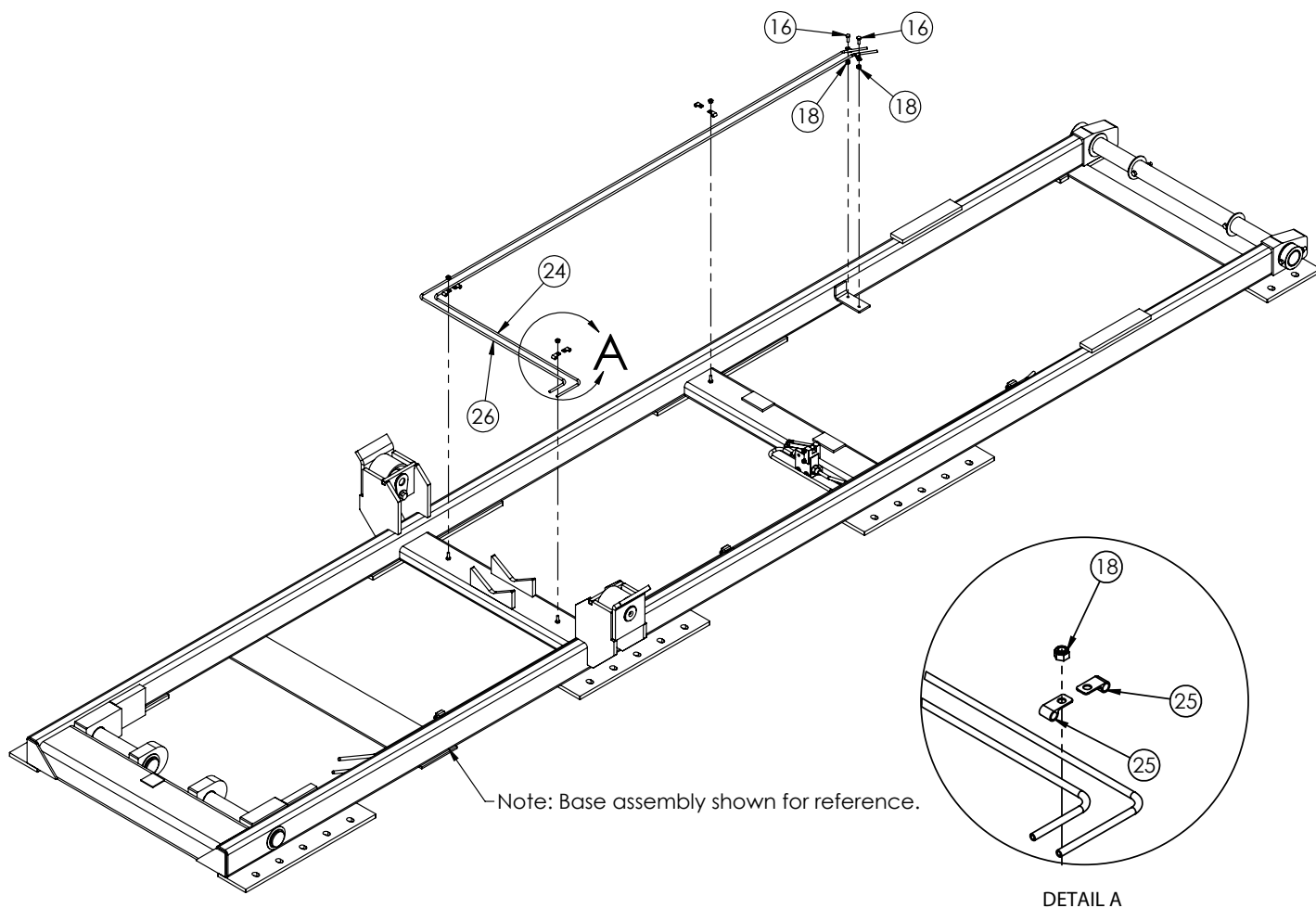
Note: Use Stellar® Boom Lube (PN 44512) on sliding boom surfaces.



## PN 53961

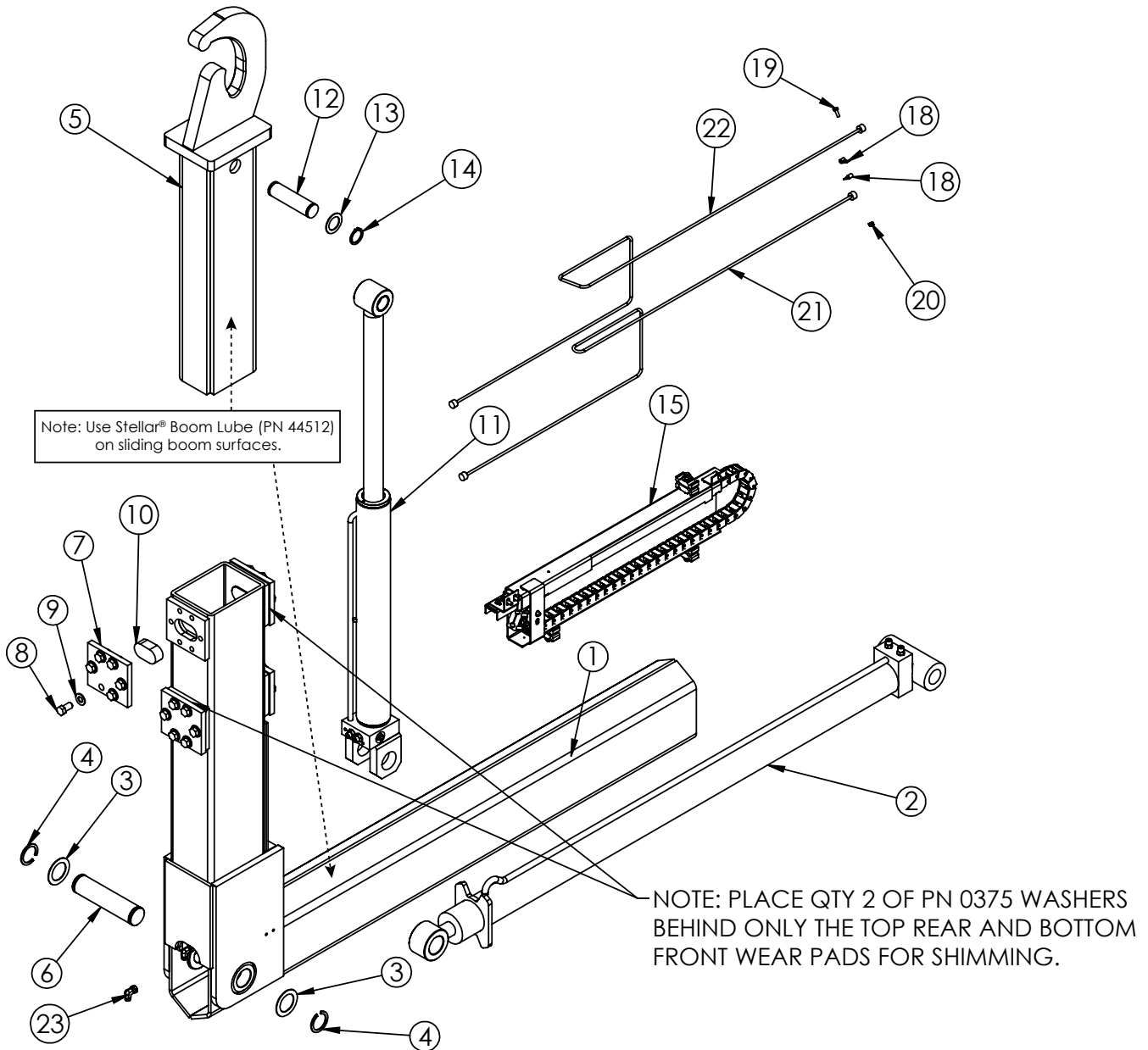
ITEM	PART	DESCRIPTION	QTY	ITEM	PART	DESCRIPTION	QTY
1	54061	JIB HYD SLIDER 26 36/54HH	1	13	D1314	FTG SWIVEL NUT ELBOW 4-C6LO-S	2
2	54064	JIB TOP SLIDER 26 HYD ADJUST 36/54HH	1	14	0346	WASHER 0.38 USS FLAT ZINC	2
3	54529	CYLINDER ASM 3.00X17.88	1	15	0353	CAP SCR 0.38-16X2.00 HHGR5	1
4	54527	CYLINDER ASM 3.00X42.00 SHORT BOSS	1	16	0479	CAP SCR 0.25-20X0.75 HHGR5	2
5	54213	HOSE TRACK ASM SLIDER 26	1	17	0347	NUT 0.38-16 HHGR5 NYLOC	1
6	43513PC	PLATE WEAR PAD COVER SLIDER34 JIB	4	18	0333	NUT 0.25-20 HHGR5 NYLOC	5
7	C5902	WASHER 0.63 SAE FLAT YELLOW GR8	24	19	0108	SNAP RING 2.00 7200-200	2
8	40019	CAP SCR 0.63-11X1.25 HHGR8 ZY	24	20	54129	SNAP RING INSIDE 1.50	2
9	42448	WEAR PAD A2 HYD JIB	4	21	54130	PIN 1.50X4.31	1
10	54874	TUBE ASM 0.25 SLIDER26 JIB HH SMALL BEND	1	22	47847	PIN 2.00X8.44	1
11	54873	TUBE ASM 0.25 SLIDER26 JIB HH LARGE BEND	1	23	0377	MACHY WASHER 2.00ID 14GA	2
12	8622	CLAMP HOSE/TUBE AG-2	1	24	55110	TUBE ASM 0.25 SLIDER26 JIB HH	1
				25	C5606	CLAMP 0.25 BLK VINYL	8
				26	55227	TUBE ASM 0.25 SLIDER26 JIB HH	1

# Jib Assembly (35.63/54" Hook Height) - PN 53961 Continued...



ITEM	PART	DESCRIPTION	QTY
16	0479	CAP SCR 0.25-20X0.75 HHGR5	2
18	0333	NUT 0.25-20 HHGR5 NYLOC	5
24	55110	TUBE ASM 0.25 SLIDER26 JIB HH	1
25	C5606	CLAMP 0.25 BLK VINYL	8
26	55227	TUBE ASM 0.25 SLIDER26 JIB HH	1

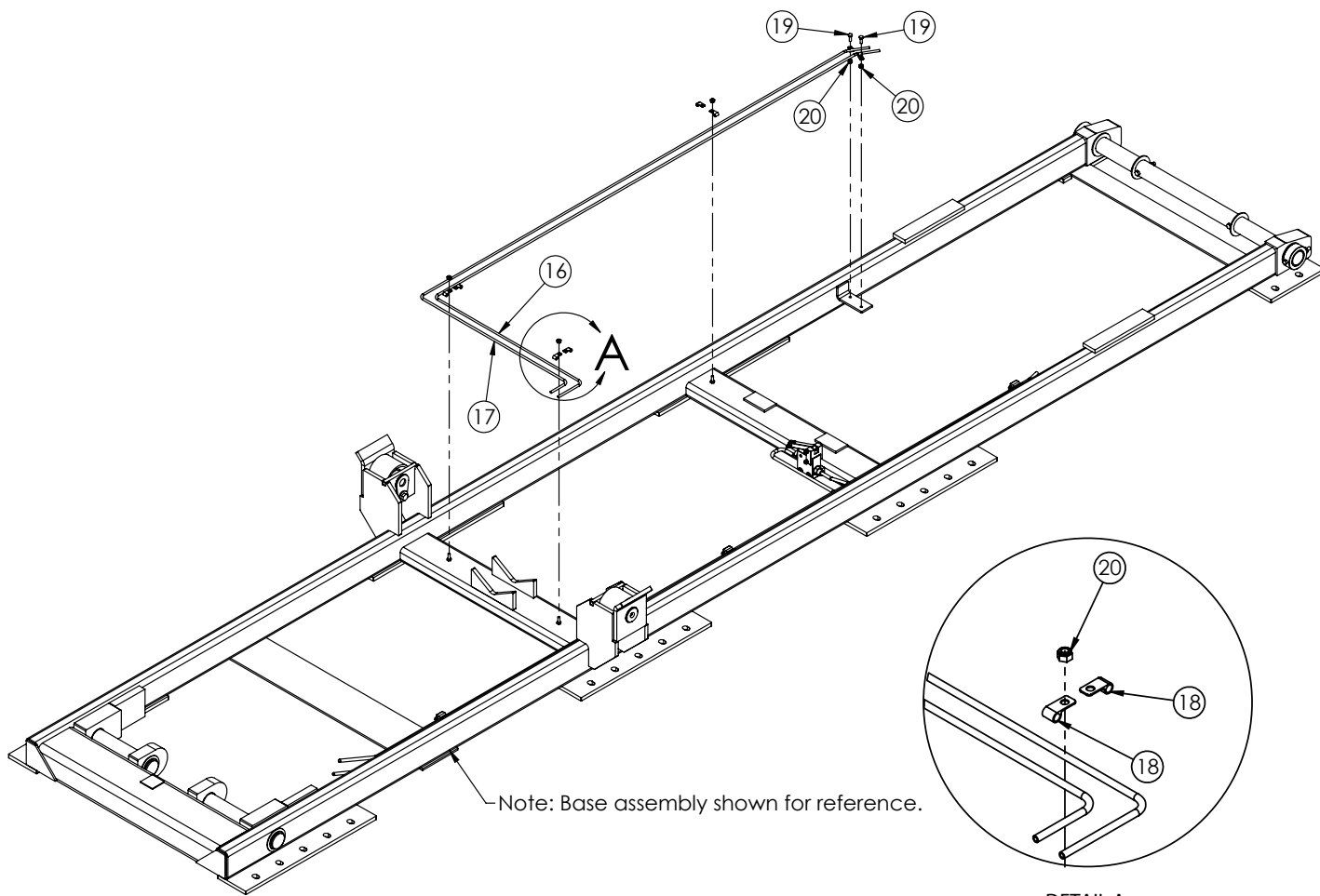
# Jib Assembly (54/61.75" Hook Height) - PN 53962



## PN 53962

ITEM NO.	PART NUMBER	DESCRIPTION	QTY.
1	54062	JIB HYD SLIDER 26 54/62HH	1
2	54527	CYLINDER ASM 3.00X42.00 SHORT BOSS	1
3	0377	MACHY WASHER 2.00ID 14GA	2
4	0108	SNAP RING 2.00 7200-200	2
5	53963	JIB TOP SLIDER 26 HYD ADJUST 54/62HH	1
6	47847	PIN 2.00X8.44 SR SS	1
7	43513PC	PLATE WEAR PAD COVER SLIDER34 JIB	4
8	40019	CAP SCR 0.63-11X1.25 HHGR8 ZY	24
9	C5902	WASHER 0.63 SAE FLAT YELLOW GR8	24
10	42448	WEAR PAD A2 HYD JIB	4
11	43505	CYLINDER ASM 3.00X7.75	1
12	42756	PIN 1.50X5.75 SR SS	1
13	0376	MACHY WASHER 1.50ID 14GA	2
14	0246	SNAP RING ID 7200 150	2
15	54213	HOSE TRACK ASM SLIDER 26	1
16	55110	TUBE ASM 0.25 SLIDER26 JIB HH YZ	1
17	55227	TUBE ASM 0.25 SLIDER26 JIB HH YZ	1
18	C5606	CLAMP 0.25 BLK VINYL	10
19	0479	CAP SCR 0.25-20X0.75 HHGR5	3
20	0333	NUT 0.25-20 HHGR5 NYLOC	6
21	54874	TUBE ASM 0.25 SLIDER26 JIB HH SMALL BEND YZ	1
22	54873	TUBE ASM 0.25 SLIDER26 JIB HH LARGE BEND YZ	1
23	D1314	FTG SWIVEL NUT ELBOW 4-C6LO-S	2
24	0375	MACHY WASHER 0.75ID 14GA	4

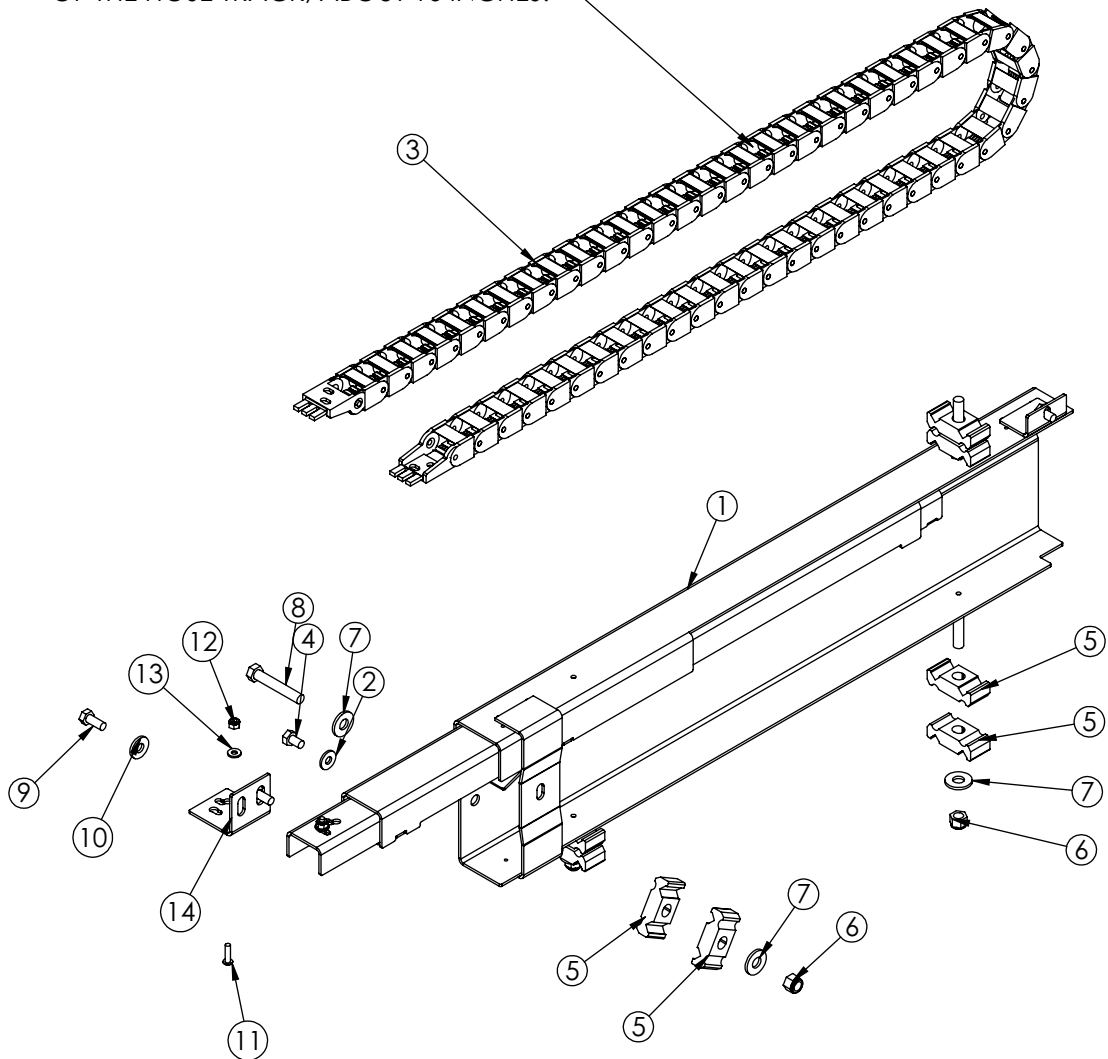
# Jib Assembly (54/61.75" Hook Height) - PN 53962 Continued...



ITEM	PART	DESCRIPTION	QTY
16	55110	TUBE ASM 0.25 SLIDER26 JIB HH	1
17	55227	TUBE ASM 0.25 SLIDER26 JIB HH	1
18	C5606	CLAMP 0.25 BLK VINYL	8
19	0479	CAP SCR 0.25-20X0.75 HHGR5	2
20	0333	NUT 0.25-20 HHGR5 NYLOC	5

# Hose Track - PN 54213

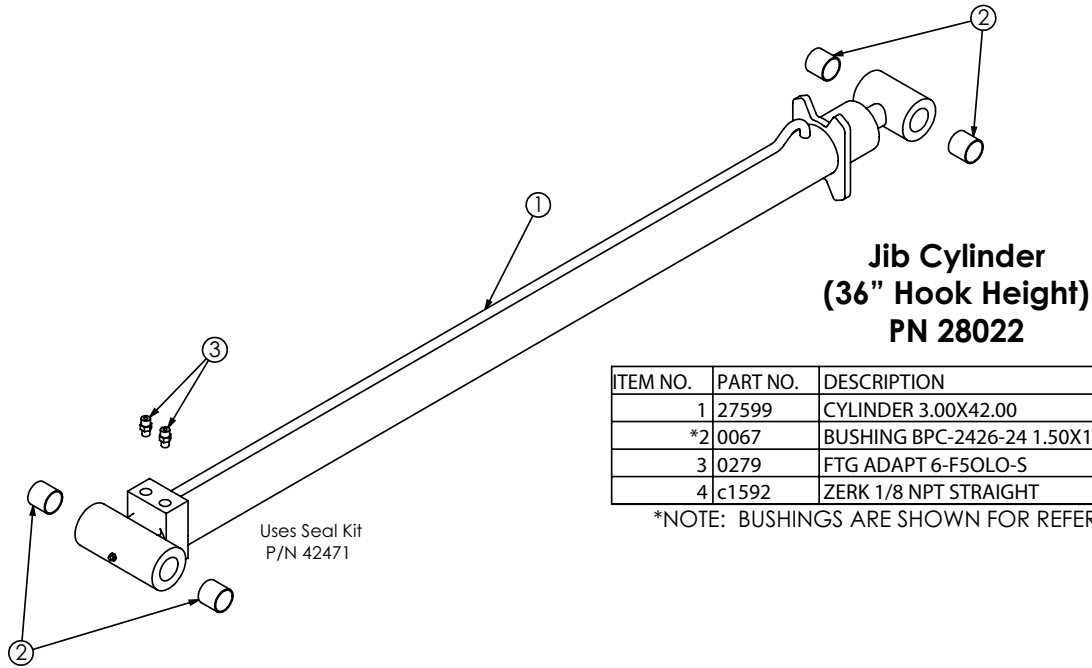
NOTE: WHEN PLACING THE HOSES (84617) FROM KIT (84289) INTO THE HOSE TRACK (54193) LEAVE EQUAL LENGTHS OF HOSE OUT EACH END OF THE HOSE TRACK, ABOUT 16 INCHES.



## PN 54213

ITEM	PART	DESCRIPTION	QTY.
1	54131	HOSE TRACK WLDMT SLIDER26	1
2	0340	WASHER 0.25 USS FLAT	2
3	54193	HOSE TRACK SLIDER 26	1
4	0484	CAP SCR 0.31-18X0.50 HHGR5	2
5	8622	CLAMP HOSE/TUBE AG-2	8
6	0347	NUT 0.38-16 HHGR5 NYLOC	3
7	0346	WASHER 0.38 USS FLAT	4
8	C0946	CAP SCR 0.38-16X2.25 HHGR5	1
9	0420	CAP SCR 0.31-18X0.75 HHGR5	2
10	0343	WASHER 0.31 USS FLAT	2
11	D0894	CAP SCR #10-24X0.75 BTNHD SS	4
12	C4956	NUT #10-24 HH NYLOC SS	4
13	D0178	WASHER #10 SAE FLAT	4
14	54214	ANGLE FORMED 0.63X1.50X12GAX3.00	1

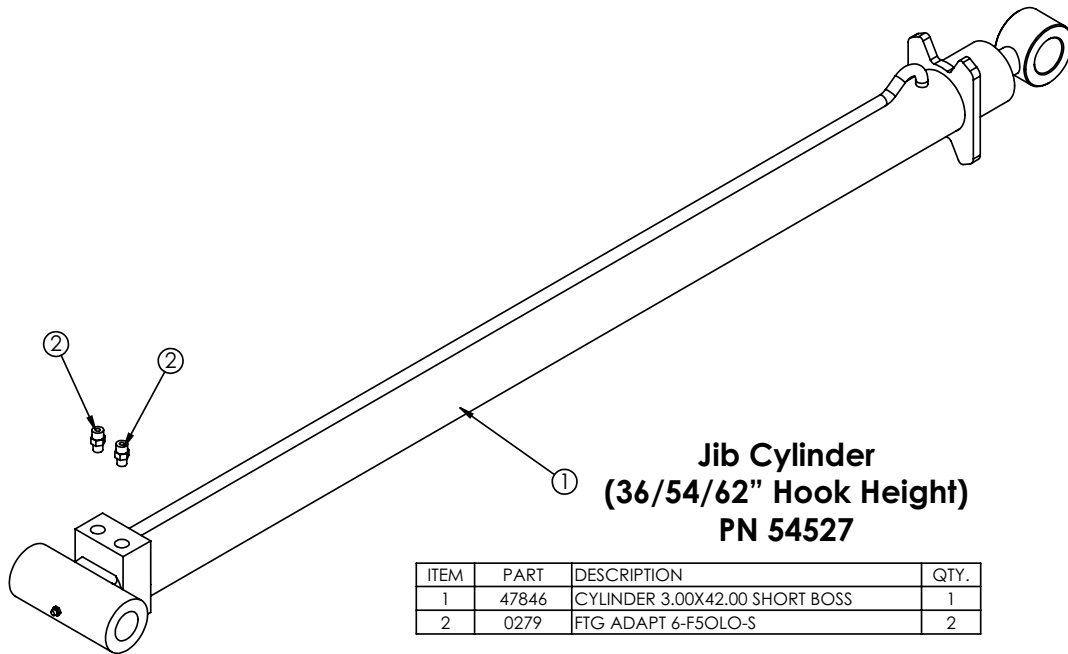
# Slider26 Cylinder Assemblies



**Jib Cylinder  
(36" Hook Height)  
PN 28022**

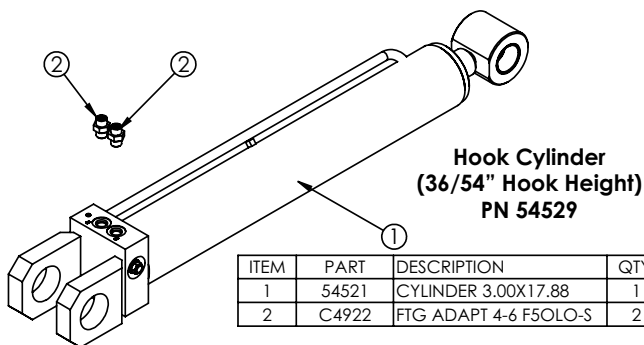
ITEM NO.	PART NO.	DESCRIPTION	QTY.
1	27599	CYLINDER 3.00X42.00	1
*2	0067	BUSHING BPC-2426-24 1.50X1.50	4
3	0279	FTG ADAPT 6-F5OLO-S	2
4	c1592	ZERK 1/8 NPT STRAIGHT	2

\*NOTE: BUSHINGS ARE SHOWN FOR REFERENCE ONLY.



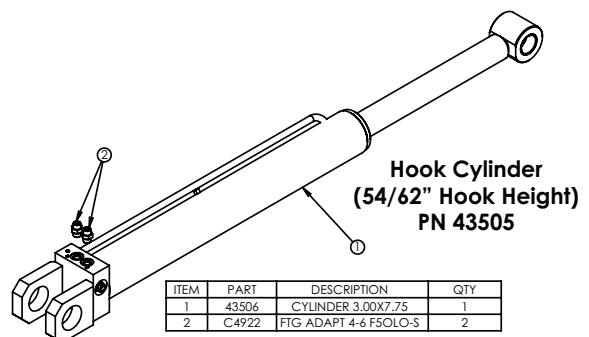
**Jib Cylinder  
(36/54/62" Hook Height)  
PN 54527**

ITEM	PART	DESCRIPTION	QTY.
1	47846	CYLINDER 3.00X42.00 SHORT BOSS	1
2	0279	FTG ADAPT 6-F5OLO-S	2



**Hook Cylinder  
(36/54" Hook Height)  
PN 54529**

ITEM	PART	DESCRIPTION	QTY.
1	54521	CYLINDER 3.00X17.88	1
2	C4922	FTG ADAPT 4-6 F5OLO-S	2

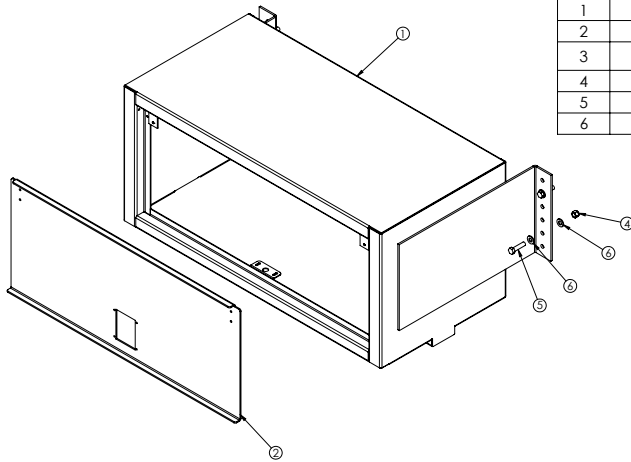


**Hook Cylinder  
(54/62" Hook Height)  
PN 43505**

ITEM	PART	DESCRIPTION	QTY
1	43506	CYLINDER 3.00X7.75	1
2	C4922	FTG ADAPT 4-6 F5OLO-S	2

# Toolbox Assembly - PN 8480

PN 8480

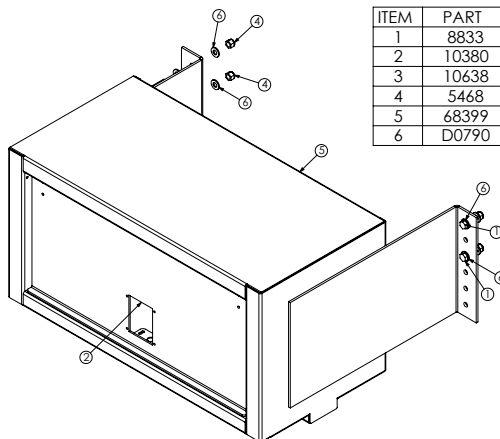


ITEM	PART	DESCRIPTION	QTY.
1	66791	UBTB WLDMT OH 20X45X22 W/MOUNTS	1
2	7193	DOOR AL OH 17.13X40.00	1
3	10638	HARDWARE ASM OH DOOR NOT SHOWN (NOT SHOWN)	1
4	5468	NUT 0.50-13 HHGR8 NYLOC	4
5	8833	CAP SCR 0.50-13X2.00 HHGR8	4
6	D0790	WASHER 0.50 SAE FLAT YELLOW GR8	8

NOTE: ITEMS NOT SHOWN:  
C5976 (8 FT) WEATHERSTRIP  
70174 OH DOOR STOP KIT

# Toolbox Assembly - PN 10401

PN 10401

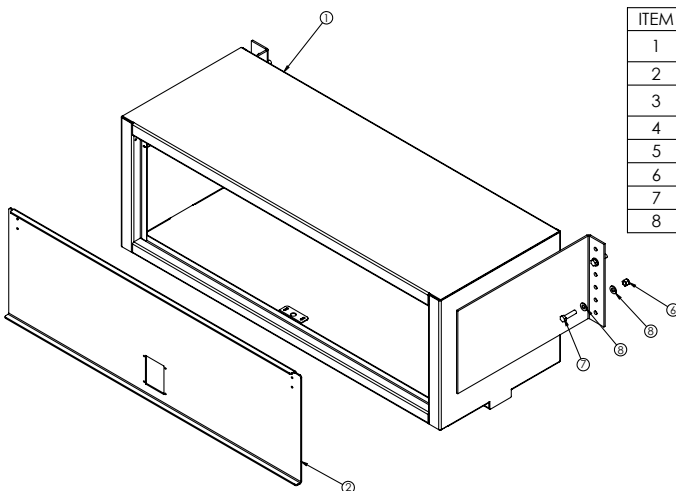


ITEM	PART	DESCRIPTION	QTY.
1	8833	CAP SCR 0.50-13X2.00 HHGR8	4
2	10380	DOOR AL OH 15.19X31.00	1
3	10638	HARDWARE ASM OH DOOR NOT SHOWN (NOT SHOWN)	1
4	5468	NUT 0.50-13 HHGR8 NYLOC	4
5	68399	UBTB WLDMT OH OH 18X36X18 W/MOUNTS TAB	1
6	D0790	WASHER 0.50 SAE FLAT YELLOW GR8	8

ITEMS NOT SHOWN:  
C5976 (5 FT) WEATHERSTRIP  
70174 OH DOOR STOP KIT

# Toolbox Assembly - PN 10402

PN 10402



ITEM	PART	DESCRIPTION	QTY.
1	68604	UBTB WLDMT OH 20X58X22 W/MOUNTS TAB	1
2	10427	DOOR AL OH 17.19X53.00	1
3	10638	HARDWARE ASM OH DOOR NOT SHOWN (NOT SHOWN)	1
4	0479	CAP SCR 0.25-20X0.75 HHGR5	2
5	0333	NUT 0.25-20 HHGR5 NYLOC	2
6	5468	NUT 0.50-13 HHGR8 NYLOC	4
7	8833	CAP SCR 0.50-13X2.00 HHGR8	4
8	D0790	WASHER 0.50 SAE FLAT YELLOW GR8	8

ITEMS NOT SHOWN:  
C5976 (8 FT) WEATHERSTRIP  
70174 OH DOOR STOP KIT



Subject to Change without Notification.  
© 2016 Stellar Industries, Inc.