



## **LABRIE RIGHT HAND™ AUTOMATED ARM HEAVY DUTY VERSION**

Labrie has developed the first generation of the Right Hand™ Automated Arm **over 20 years ago**.

Being an ISO Company, we are continually improving our design.

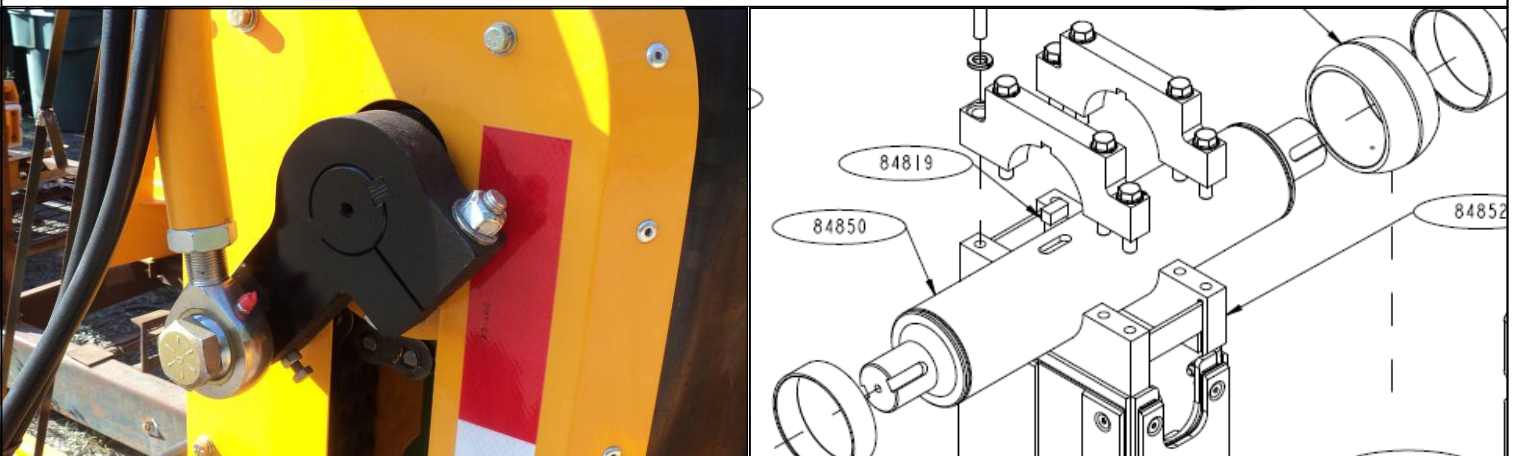
The new **Heavy-Duty Version** of the Right Hand™ has been introduced to handle the heaviest applications in the industry and is also available with the 300 gallons optional grabber.

Here is a description of the main features included with our Heavy Duty Right Hand™ :

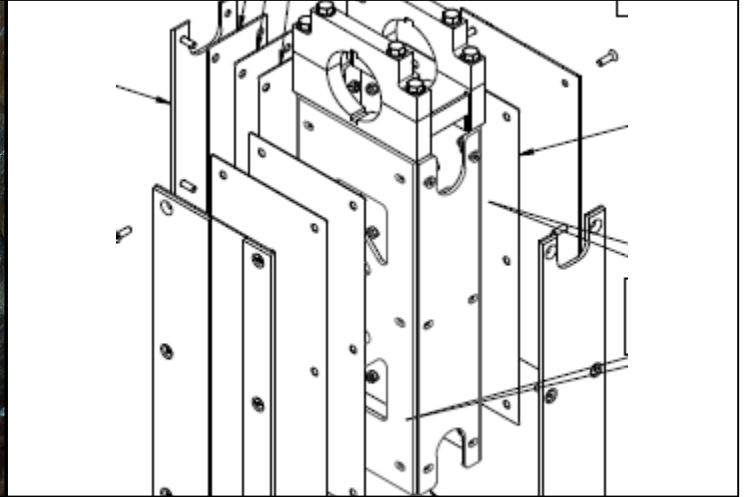
**-Double width genuine Tsubaki lift chain, 2X stronger than our standard arm.  
Maintenance intervals are greatly reduced.**



**-Four (4) inch diameter Heavy Duty center shaft in lieu of standard 2.25 inch.  
More than double the resistance to stress and heavy loads.**



**-New Nyloil full width slide pads in lieu of common pads, goes a long way for better resistance and reduced maintenance intervals.**



**Safety is always a priority with Labrie**

**The Heavy Duty version of the Right Hand™ uses hydraulic cylinders with fully integrated counterbalance valves that will stop any drift motion in the event of a hose failure.**

**Counterbalance valves are also smoother and more precise than traditional "lock valves" sometimes used by other manufacturers.**



**Lift cylinder rod is larger for increased resistance and faster retract.**



**The Heavy Duty Right Hand™ uses keyless bushings at the grabber and lifting arm pivot points for outstanding resistance, even in the most severe conditions.**

