

Parts Manual



MINIMAX



 **labrie**
Labrie Enviroquip Group

equipment for the solid waste industry

labriepius  **Juggler**  **LEACH**  **WITTKE** **PENCAG**

labrie *plus*

Thank you for your purchase of a new Labrie Minimax. To ensure maximum reliability, Insist on genuine **labrieplus** replacement parts. Labrie Plus replacement parts are designed and manufactured to exacting standards. The use of counterfeit, will-fit or substitute parts may effect the operation and performance of the unit.






Visit our web site at www.labrieplus.com, or contact us at 1-800-231-2771, twenty four hours a day, seven days a week. We are available to help you with any questions or concerns



TABLE OF CONTENTS

LABRIE PLUS	1	SECTION 5 Cylinders	
TABLE OF CONTENTS	2	Packer Cylinder - HYC01352-01	53
CAPSCREW MARKING and		Tailgate Cylinder - HYC00330	54
TORQUE VALUES CHART	3	Crusher Cylinder - HYC00198-02	55
SECTION 1 Body		SECTION 6 Electrical	
Clean Out Door	5	Packer Switches	57
Floor Wear Liners	6	Crusher Switch	58
Mid Frame Hopper Components	7	Upper Side Door Open Switch	59
Side door seal	8	Side Door Closed Switches	60
Packer Assembly	9	Tailgate Locked And Fully Open Sensors	61
Crusher Panel	11	Light Bars - Upper and Mid	63
Curbside Hopper Doors	13	Misc. Electrical Components	65
Streetside Hopper Door	15		
Body Front Enclosure	17		
Floating Panel Wiper	18		
Tailgate Weldment	19		
Fenders	20		
Tailgate Assembly	21		
Mudflaps	23		
Shovel and Broom	25		
ICC Bumper	26		
Fire Extinguisher	27		
SECTION 2 Hydraulics			
Pressure/Return Hydraulics	29		
Packer Hydraulics	31		
Crusher Hydraulics	33		
Tailgate Hydraulics	35		
Reservoir	37		
Tipper Hydraulics	39		
Chassis Hyds - IH 4300	41		
Chassis Hyds - IH 4300 W/Tipper	42		
Chassis Hyds - HINO 338	43		
Chassis Hyds - Freightliner M2 106	44		
CLamps and Accessories	45		
SECTION 3 Valves			
Control Valve - HYV05171	47		
Return Filter - HYF20015	48		
Holding Valve - HYV02670	49		
Diverter Valve - HYV02590	50		
SECTION 4 Pump			
Pump - HYP01489-01	51		

CAPSCREW MARKING AND TORQUE VALUES

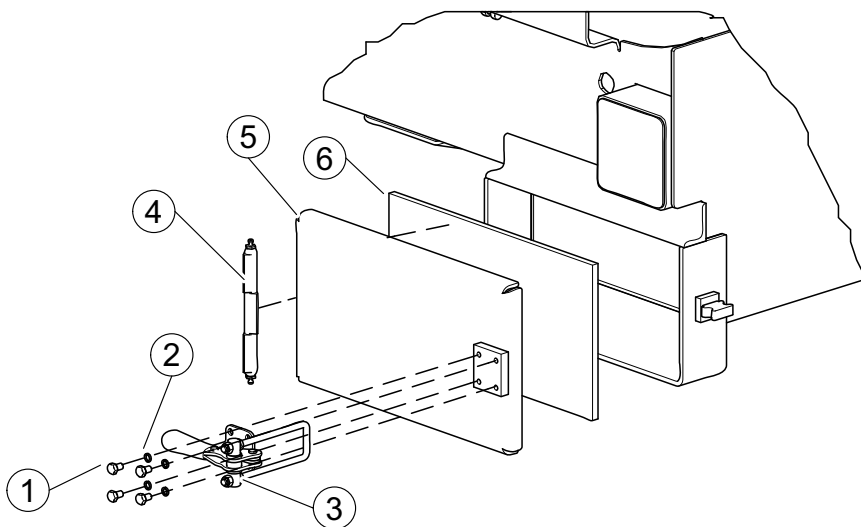
Usage	Much Used	Used at Times	Used at Times
Capscrew Diameter & Minimum Tensile Strength PSI	To ¼ - 120,000 To 1 - 115,000	To ⅝ - 140,000 To ¾ - 133,000	150,000
Quality of Material	Min. Commercial	Med. Commercial	Best Commercial
SAE Grade Number	5	6 or 7	8
CAPSCREW HEAD MARKINGS Manufacturers marks may vary. These are all SAE Grade 5 (3-line.) 		 	
Capscrew Body Size (Inches) - (Thread)	Torque Ft-Lb (kg m)	Torque Ft-Lb (kg m)	Torque Ft-Lb (kg m)
¼ - 20	8 (1.11)	10 (1.38)	12 (1.66)
- 28	10 (1.38)		14 (1.94)
⅝ ₁₆ - 18	17 (2.35)	19 (2.63)	24 (3.32)
- 24	19 (2.63)		27 (3.73)
⅜ ₈ - 16	31 (4.29)	34 (4.70)	44 (6.09)
- 24	35 (4.84)		49 (6.78)
⅞ ₁₆ - 14	49 (6.78)	55 (7.61)	70 (9.68)
- 20	55 (7.61)		78 (10.79)
½ ₂ - 13	75 (10.37)	85 (11.76)	105 (14.52)
- 20	85 (11.76)		120 (16.60)
⅞ ₁₆ - 12	110 (15.21)	120 (16.60)	155 (21.44)
- 18	120 (16.60)		170 (23.51)
⅝ ₈ - 11	150 (20.75)	167 (23.10)	210 (29.04)
- 18	170 (23.51)		240 (33.19)
¾ ₄ - 10	270 (37.34)	280 (38.72)	375 (51.86)
- 16	295 (40.80)		420 (58.09)
⅞ ₈ - 9	395 (54.63)	440 (60.85)	605 (83.67)
- 14	435 (60.16)		675 (93.35)
1 - 8	590 (81.60)	660 (91.28)	910 (125.85)
- 14	660 (91.28)		990 (136.92)

NOTES:

1. Always use the torque values listed above when specific torque values are not available.
2. The above is based on use of clean, dry threads.
3. Reduce torque by 10% when engine oil is used as a lubricant.
4. Reduce torque by 20% if new plated capscrews are used.
5. General Formula for calculating Torques is as follows: Torque in Inch Lbs. = .2 x Nominal Diameter of Screw x Loads in Lbs., where Load = 80% of Yield Strength, expressed in Lbs., not pounds per square inch.

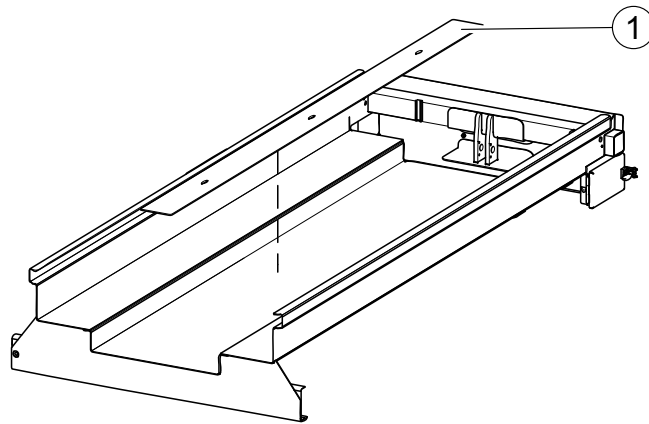
SECTION 1

CLEAN OUT DOOR

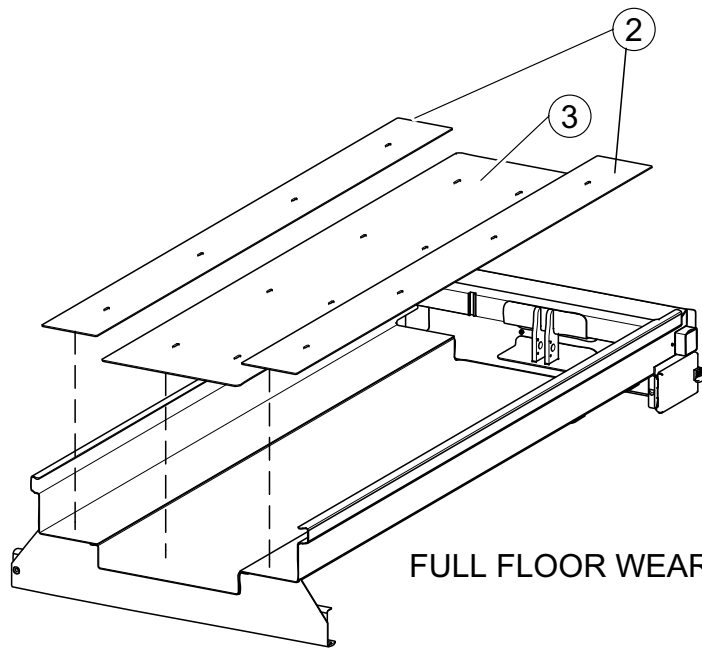


REF. NO.	PART NO.	DESCRIPTION	QTY.
1	QUB02601	BOLT	8
2	QUR01270	WASHER	8
3	QUC01210	LATCH	2
4	QUP01915	HINGE	2
5	10720	DOOR (Includes Item #4)	1
6	103617	GASKET, Rubber	2
	10719	ASSEMBLY, Door (Includes Items 4 Thru 6)	2

FLOOR WEAR LINERS



CENTER PACKER WEAR LINER

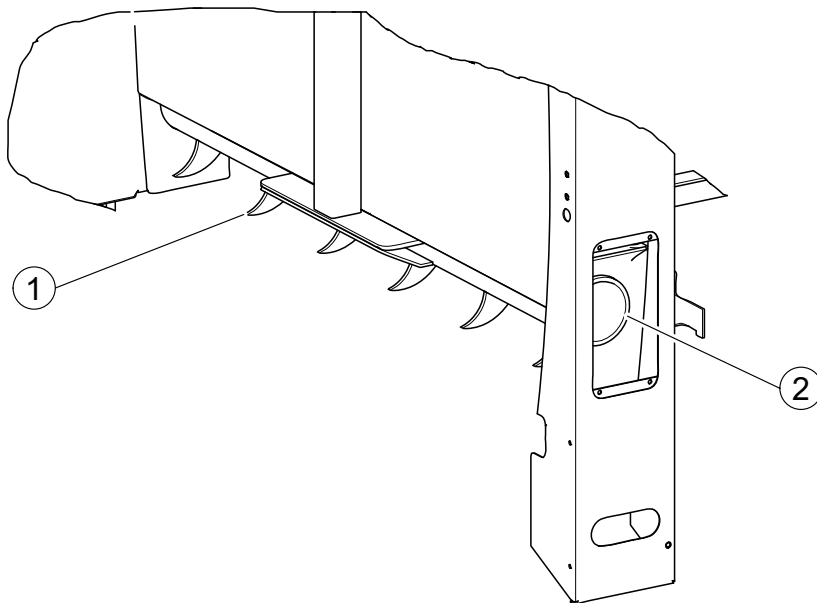


FULL FLOOR WEAR LINERS

REF. NO.	PART NO.	DESCRIPTION	QTY.
1	74709	LINER, Center	1
2	88169	FULL LINER, Outer	2
3	88165	FULL LINER, Center	1

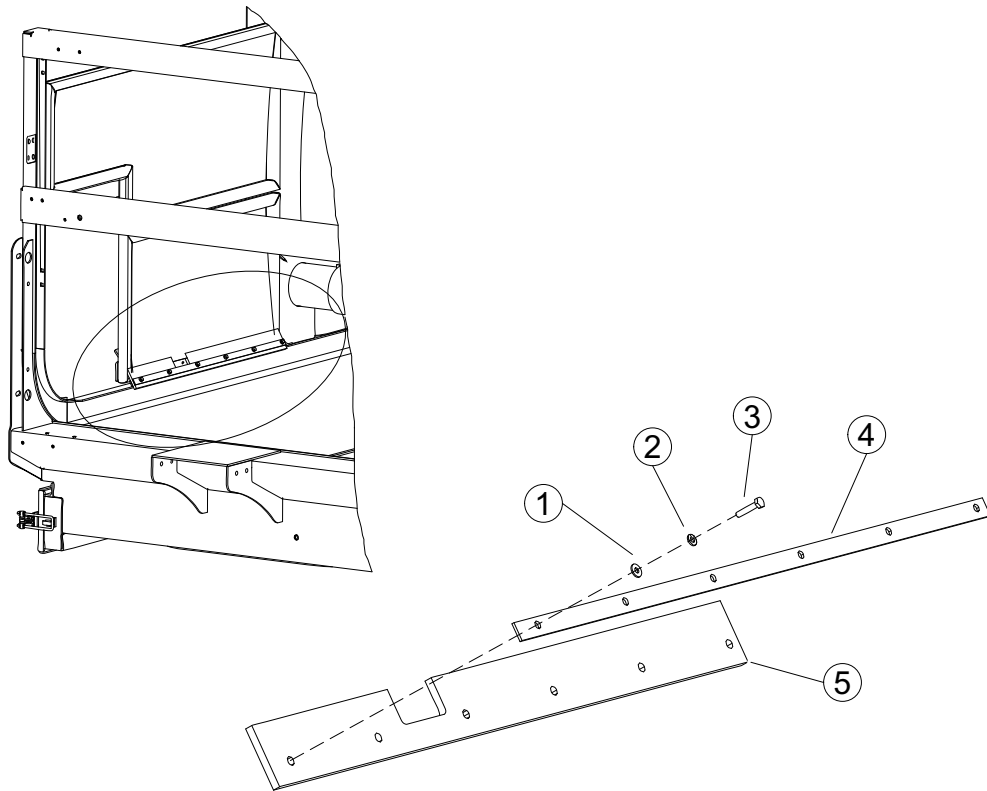
SECTION 1

MID FRAME HOPPER COMPONENTS



REF. NO.	PART NO.	DESCRIPTION	QTY.
1	16040	HOLDING TOOTH	A/R
2	58027	TUBE, Breaker	1

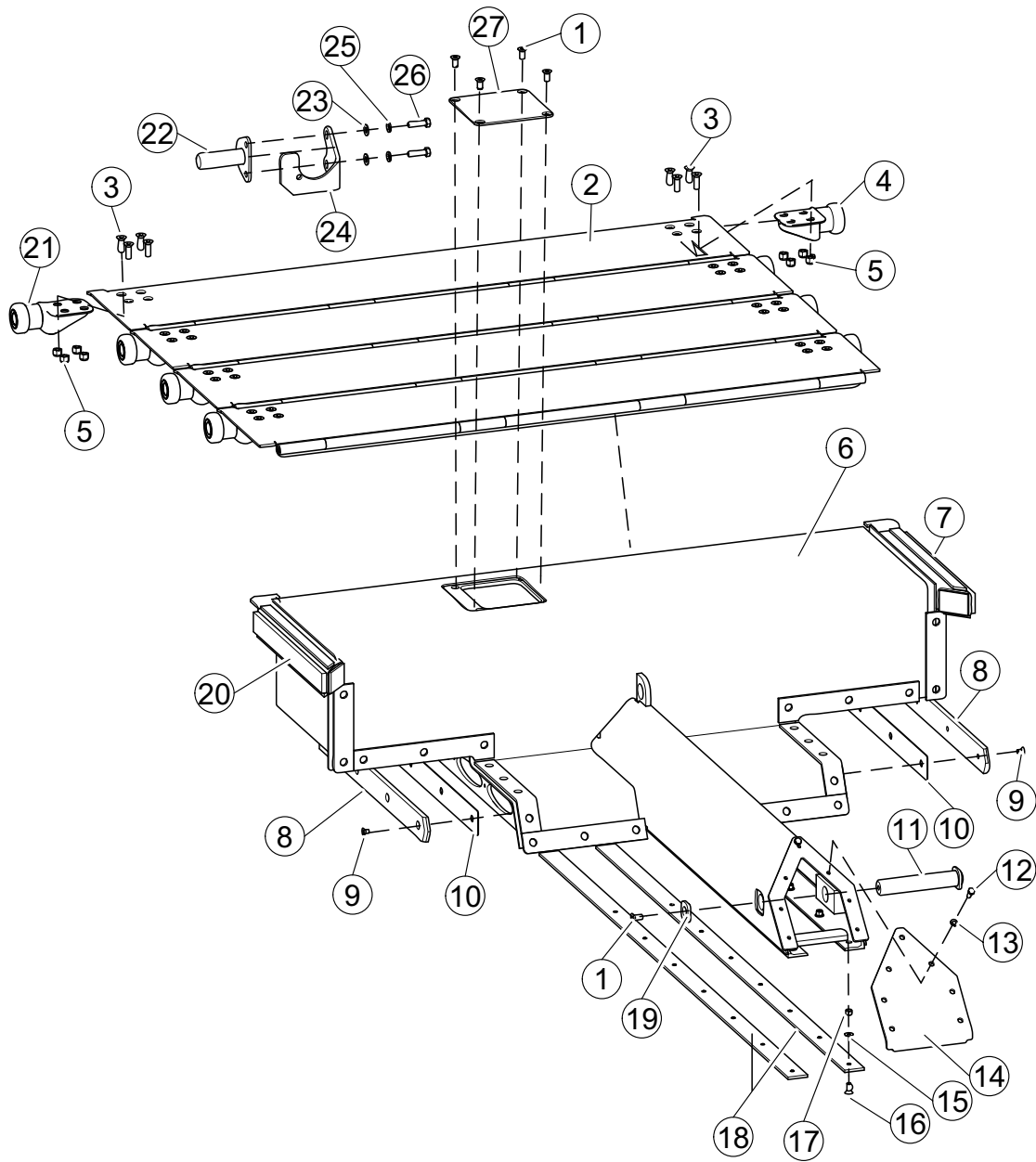
SIDE DOOR SEAL



REF. NO.	PART NO.	DESCRIPTION	QTY.
1	QUR01695	WASHER	6
2	QUR01261	WASHER	6
3	QUB02160	BOLT	6
4	88339	BAR, Retainer	1
6	88338	SEAL	1

SECTION 1

PACKER ASSEMBLY

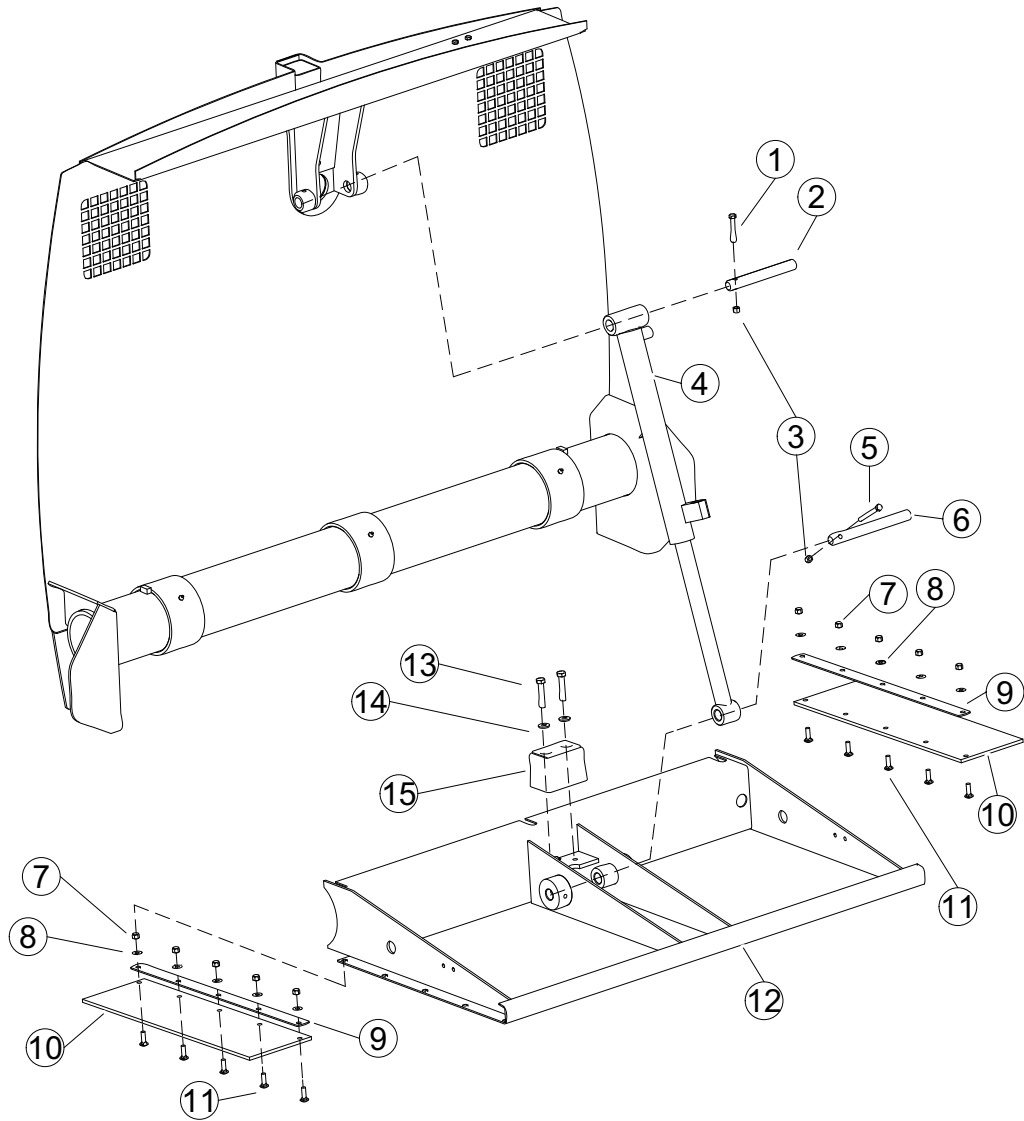


PACKER ASSEMBLY

REF. NO.	PART NO.	DESCRIPTION	QTY.
1	QUB05700	BOLT	5
2	88186	FOLLOWER PANEL ASSEMBLY (Less Rollers)	1
3	QUB05800	BOLT	32
4	59022	ROLLER - R.S.	4
5	QUE01500	NUT	32
6	75839	WELDMENT, Packer Panel (Less Wear Shoes)	1
7	59017	WELDMENT, Upper Wear Shoe - R.S.	1
8	66057	SHOE, Wear - Mid	2
9	QUB02720	BOLT	8
10	83662	SHIM -.0747" Thick	A/R
11	58122	PIN	1
12	QUB03400	BOLT	7
13	QUR01275	WASHER	7
14	75843	COVER, Access	1
15	QUR01902	WASHER	14
16	QUB05600	BOLT	14
17	QUE01302	NUT	14
18	72546	SHOE, Wear - Lower	2
19	58115	RETAINER, Pin	1
20	59018	WELDMENT, Upper Wear Shoe - L.S.	1
21	59026	ROLLER - L.S.	4
22	58125	PIN	1
23	QUR01905	WASHER	2
24	59182	BRACKET	1
25	QUR01300	WASHER	2
26	QUB04601	BOLT	2
27	58108	COVER, Access	1

SECTION 1

CRUSHER PANEL

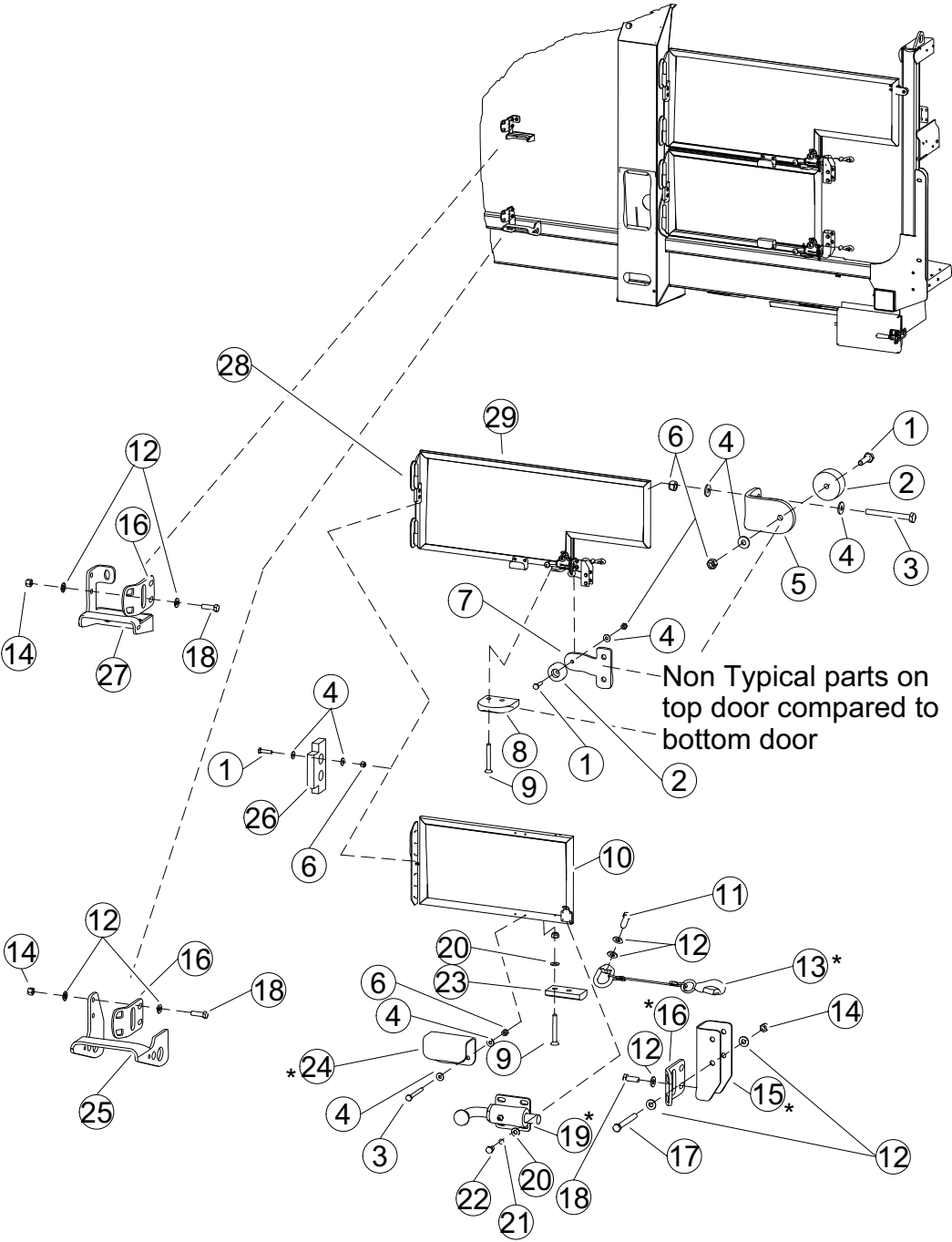


CRUSHER PANEL

REF. NO.	PART NO.	DESCRIPTION	QTY.
1	QUB03920	BOLT	1
2	10300	PIN	1
3	QUE01302	NUT	2
4	HYC00198-02	CYLINDER	1
5	QUB054012	BOLT	1
6	10301	PIN	1
7	QUE01305	NUT	10
8	QUR01901	WASHER	10
9	156427	BAR, Backing	2
10	58021	RUBBER	2
11	QUB11940	BOLT	10
12	88191	WELDMENT, Crusher Panel	1
13	QUB04801	BOLT	2
14	QUR01912	WASHER	2
15	QUC00100	BUMPER	1

SECTION 1

CURBSIDE HOPPER DOORS



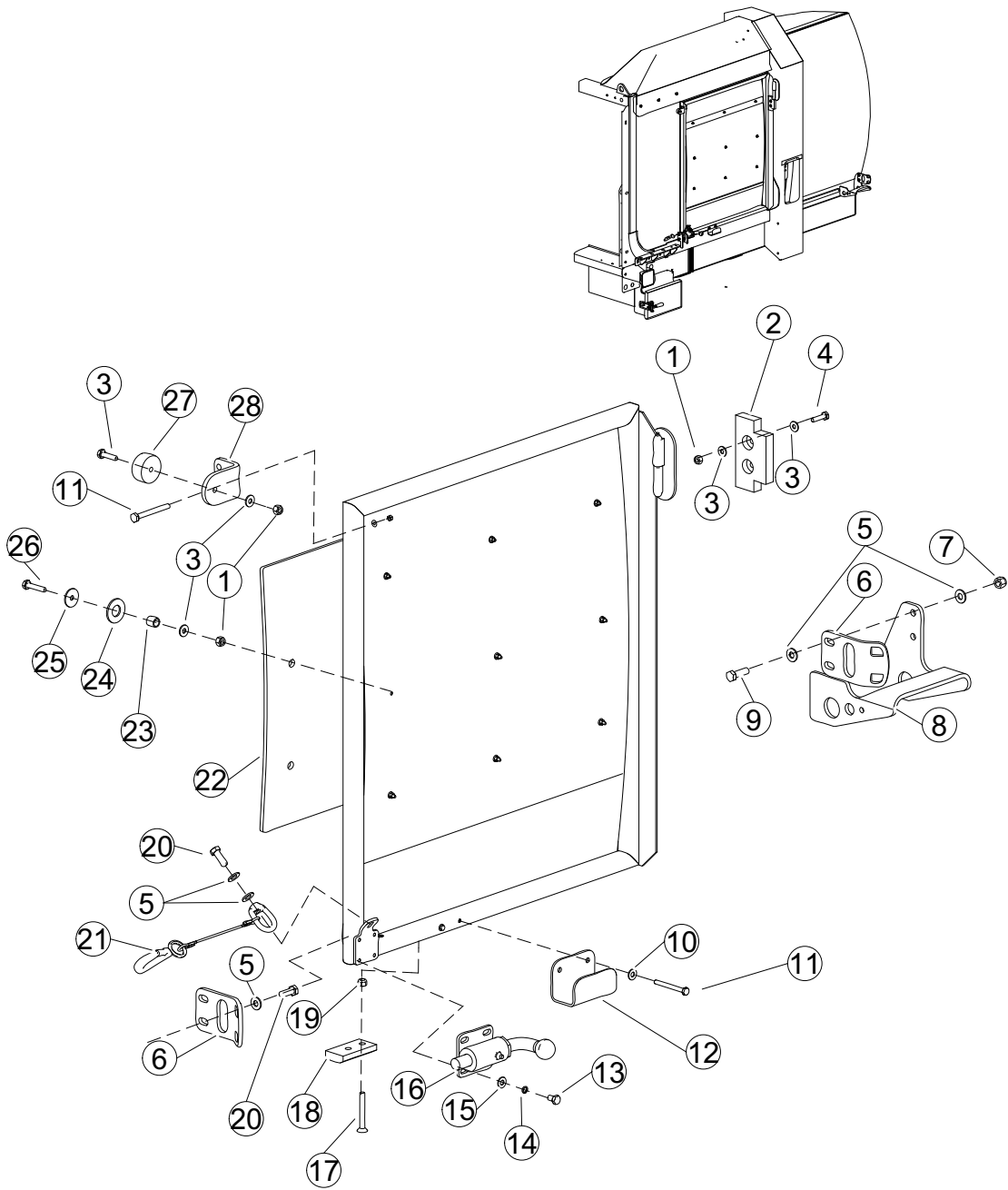
Parts with * are Typical fo Upper and Lower Door Latches

CURBSIDE HOPPER DOORS

REF. NO.	PART NO.	DESCRIPTION	QTY.
1	QUB02120	BOLT	6
2	QUB01300	BUMPER, Rubber	2
3	QUB02405	BOLT	6
4	QUR01695	WASHER	13
5	160744	BRACKET, Bumper	1
6	QUE01175	NUT	11
7	160745	BRACKET, Bumper	1
8	49996	GUIDE, Plastic	1
9	QUB03218	BOLT	4
10	88220	WELDMENT, Door - Lower	1
11	QUB03401	BOLT	2
12	QUR01902	WASHER	18
13	80648	CABLE	2
14	QUE01302	NUT	8
15	88304	BRACKET, Latch	2
16	88300	PLATE, Latch	3
17	QUB04012	BOLT	4
18	QUB03501	BOLT	6
19	88296	LATCH	2
20	QUR01825	WASHER	10
21	QUR01270	WASHER	8
22	QUB02601	BOLT	8
23	58085	GUIDE, Plastic	1
24	88312	HANDLE	2
25	88298	BRACKET, Latch	1
26	40949	BUMPER, Plastic	2
27	59165	BRACKET, Latch	1
28	QUP01910	HINGE	4
29	88225	WELDMENT, Door - Upper	1

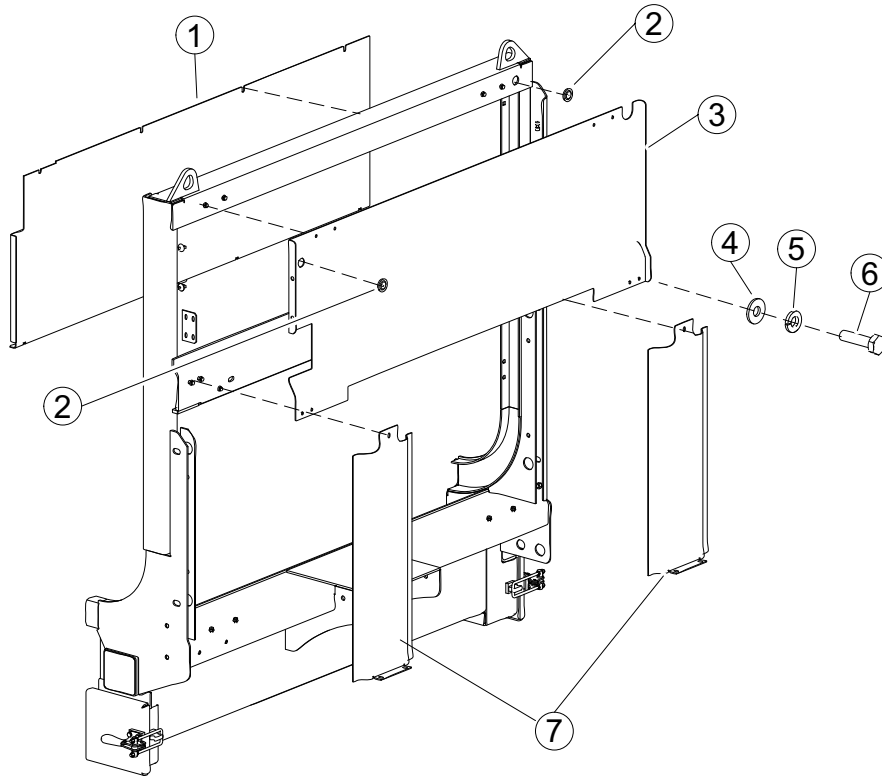
SECTION 1

STREETSIDE HOPPER DOOR



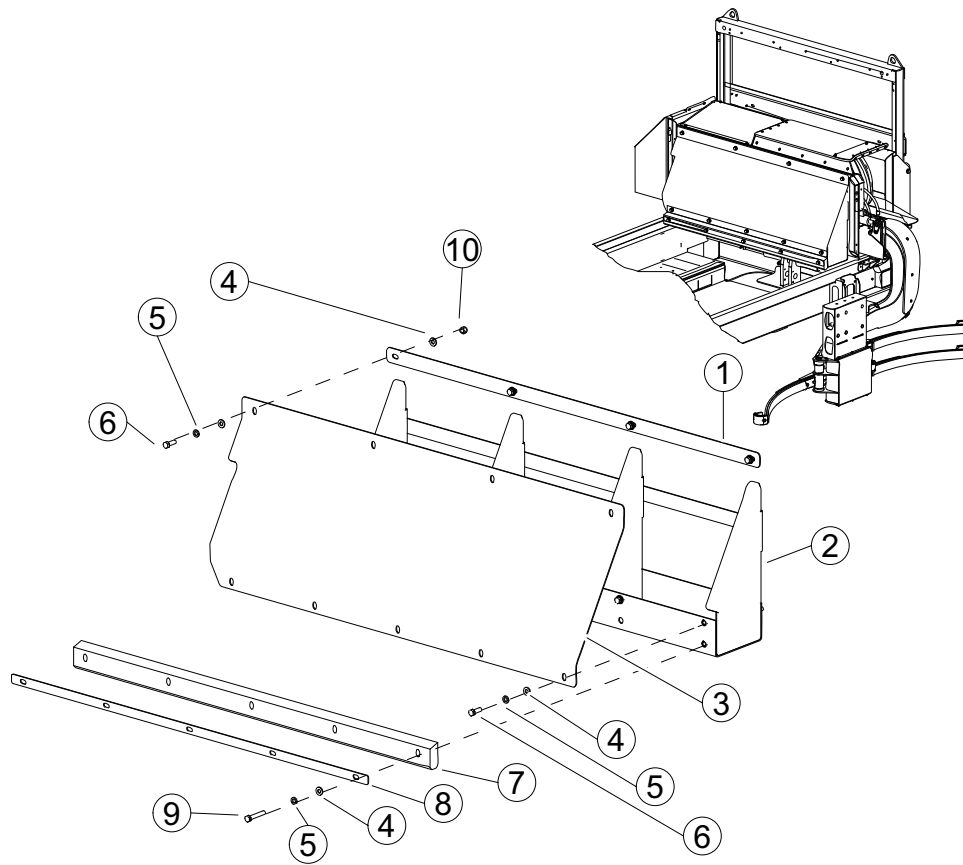
STREETSIDE HOPPER DOOR

REF. NO.	PART NO.	DESCRIPTION	QTY.
1	QUE01175	NUT	12
2	40949	BUMPER, Plastic	1
3	QUR01695	WASHER	3
4	QUB02120	BOLT	2
5	QUR01902	WASHER	8
6	88300	PLATE, Latch	2
7	QUE01302	NUT	2
8	88299	BRACKET	1
9	QUB03501	BOLT	2
10	QUR01800	WASHER	2
11	QUB02405	BOLT	4
12	88312	HANDLE	1
13	QUB02601	BOLT	4
14	QUR01270	WASHER	4
15	QUR01895	WASHER	4
16	88296	LATCH	1
17	QUB03218	BOLT	2
18	58085	GUIDE, Plastic	1
19	QUE01205	NUT	2
20	QUB03401	BOLT	3
21	80648	CABLE	1
22	88332	LINER, Plastic	1
23	QUE06000	SPACER	9
24	QUR01960	WASHER	9
25	QUR01704	WASHER	9
26	QUB02160	BOLT	9
27	QUB01300	BUMPER, Rubber	1
28	160744	BRACKET, Bumper	1

SECTION 1**BODY FRONT ENCLOSURE**

REF. NO.	PART NO.	DESCRIPTION	QTY.
1	160746	ENCLOSURE	1
2	QUG01095	GROMMET	2
3	88333	ENCLOSURE	1
4	QUR01695	WASHER	14
5	QUR01261	WASHER	14
6	QUB02120	BOLT	14
7	88334	ENCLOSURE	2

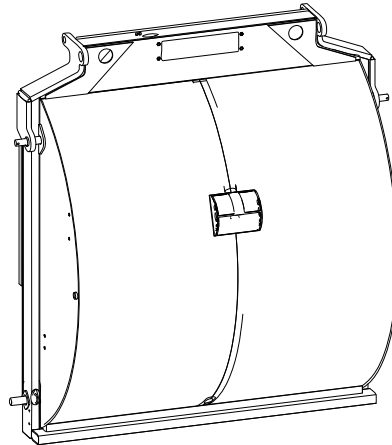
FLOATING PANEL - WIPER



REF. NO.	PART NO.	DESCRIPTION	QTY.
1	83673	BAR, Backing	1
2	83671	FRAME, Floating Panel	1
3	83669	PANEL, Floating Panel	1
4	QUR01912	WASHER	18
5	QUR01300	WASHER	14
6	QUB04503	BOLT	9
7	83672	WIPER, Plastic	1
8	160748	BAR, Retainer	1
9	QUB04828	BOLT	5

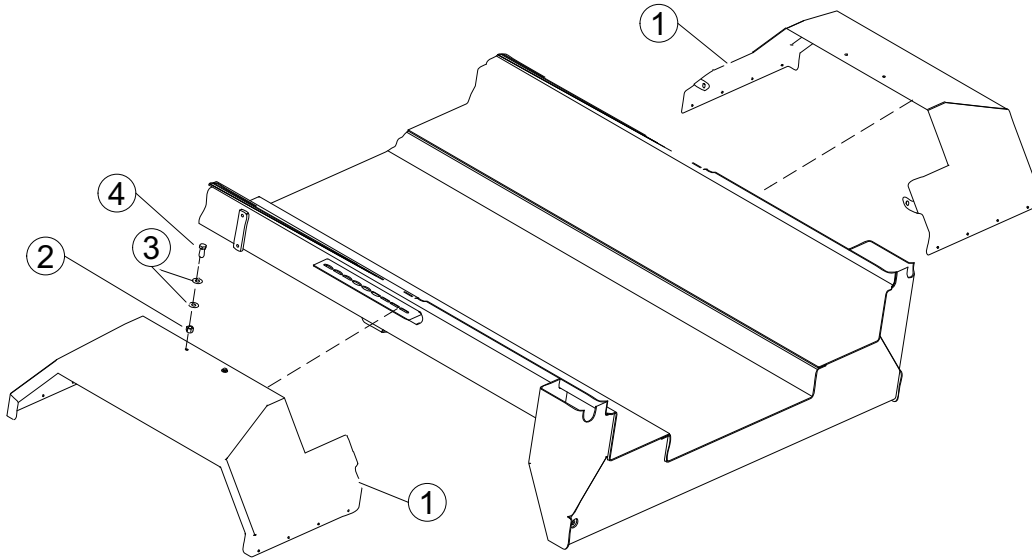
SECTION 1

TAILGATE WELDMENT



REF. NO.	PART NO.	DESCRIPTION	QTY.
1	88185	WELDMENT, Tailgate - 2 YD ³	1
	88340	WELDMENT, Tailgate - 4 YD ³	1

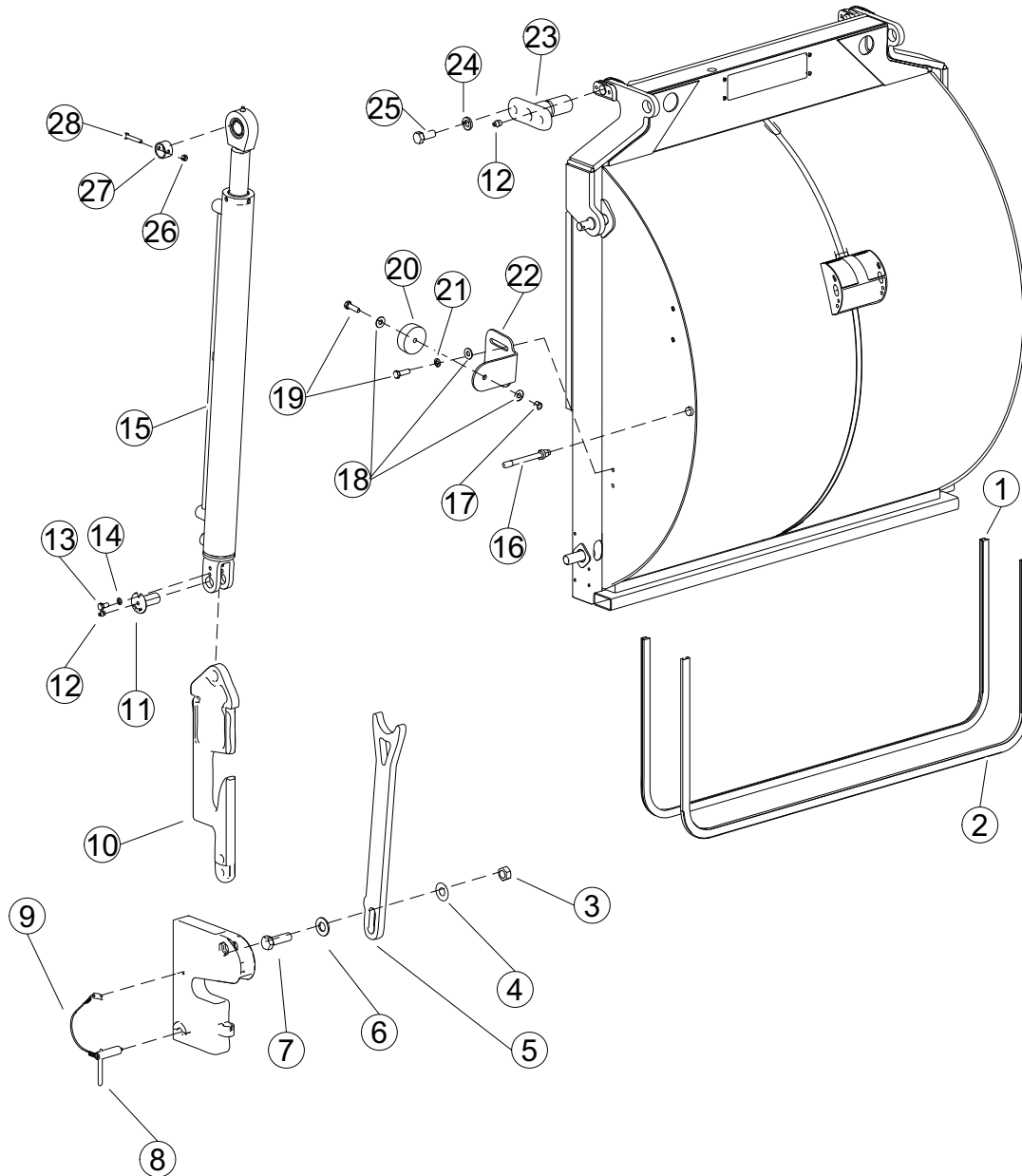
SECTION 1
FENDERS



REF. NO.	PART NO.	DESCRIPTION	QTY.
1	156417	FENDER	2
2	QUE01305	NUT	8
3	QUR01901	WASHER	16
4	QUB03399	BOLT	8

SECTION 1

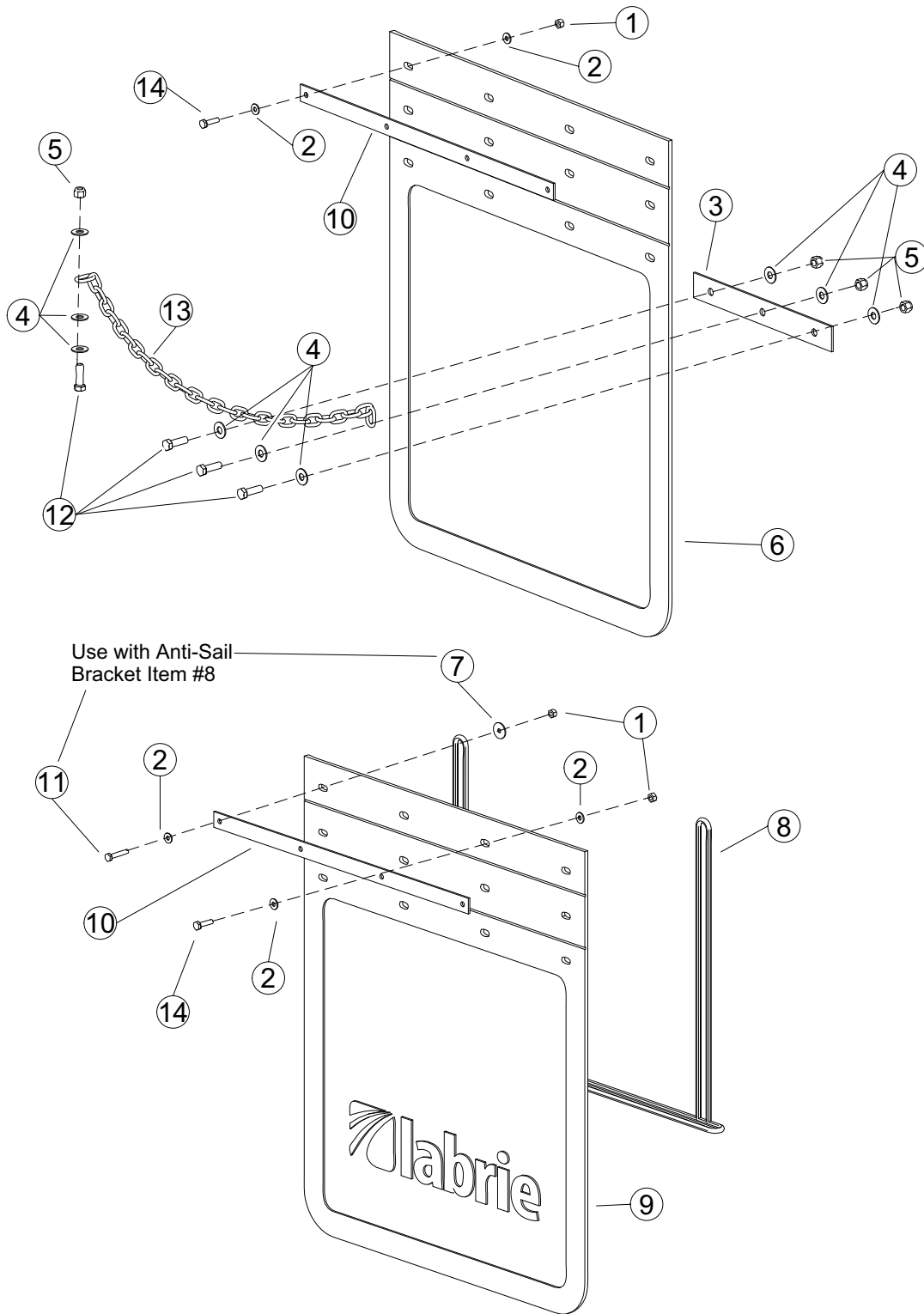
TAILGATE ASSEMBLY



SECTION 1**TAILGATE ASSEMBLY**

REF. NO.	PART NO.	DESCRIPTION	QTY.
1	CIC01942	SEAL, Tailgate	1
2	53740	CHANNEL, Seal	1
3	QUE02045	NUT	1
4	155152	WASHER	1
5	81011	PROP	1
6	QUR02005	WASHER	1
7	QUB08701	BOLT	1
8	69119	PIN	2
9	QUE01100	CABLE	2
10	60785	LATCH	2
11	60782	PIN	2
12	QUG02000	FITTING, Grease	4
13	QUB03360	BOLT	2
14	QUE01272	WASHER	2
15	HYC00330	CYLINDER	2
16	48408	INDICATOR	2
17	QUE01305	NUT	1
18	QUR01901	WASHER	4
19	QUB03505	BOLT	2
20	QUB00075	BUMPER, Rubber	1
21	QUR01274	WASHER	2
22	69653	BRACKET	1
23	69071	PIN, Tailgate	2
24	QUR01300	WASHER	4
25	QUB04414	BOLT	4
26	QUE01225	NUT	2
27	14883	RETAINER	2
28	QUB03100	BOLT	2

SECTION 1
MUDFLAPS

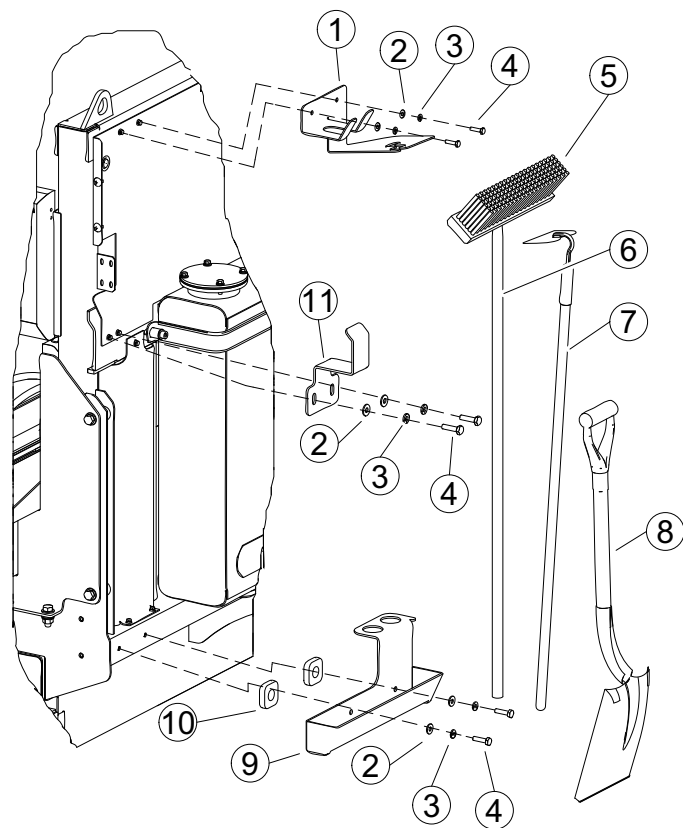


SECTION 1
MUDFLAPS

REF. NO.	PART NO.	DESCRIPTION	QTY.
1	QUE01175	NUT	A/R
2	QUR01695	WASHER	A/R
3	10976	BAR, Backing	A/R
4	QUR01901	WASHER	A/R
5	QUE01305	NUT	A/R
6	43694	MUDFLAP, No Logo	A/R
7	QUR01704	WASHER	A/R
8	CIG00800	BRACKET, Anti Sail	A/R
9	91021	MUDFLAP, Labrie Logo	A/R
10	5523	BRACKET	A/R
11	QUB02210	BOLT	A/R
12	QUB03505	BOLT	A/R
13	156435	CHAIN	A/R
14	QUB02120	BOLT	A/R

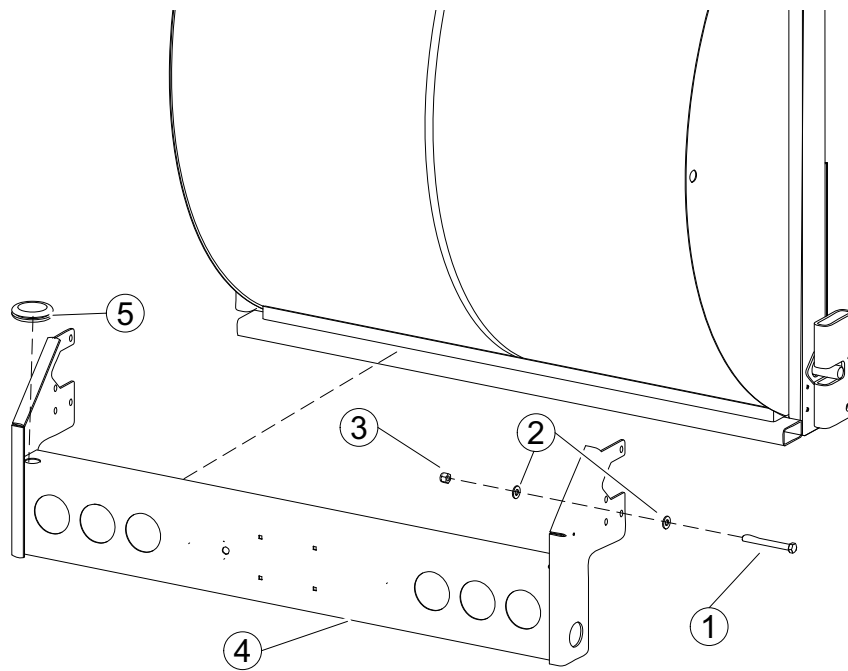
SECTION 1

SHOVEL AND BROOM



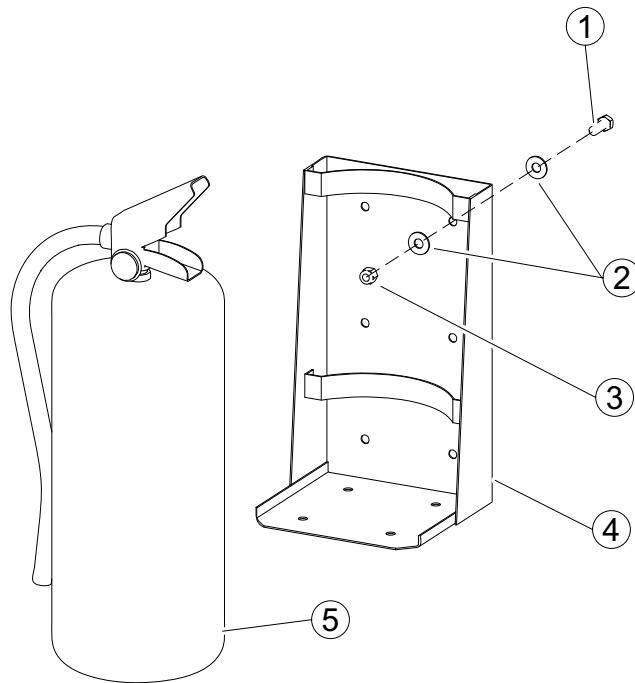
REF. NO.	PART NO.	DESCRIPTION	QTY.
1	156434	BRACKET	1
2	QUR01695	WASHER	6
3	QUR01261	WASHER	6
4	QUB02120	BOLT	6
5	QUP03860	BROOM END	1
6	QUP03865	BROOM HANDLE	1
7	COG00100	HOE	1
8	QUP03855	SHOVEL	1
9	156432	BRACKET	1
10	70032	SPACER	2
11	156433	BRACKET	1

ICC BUMPER



REF. NO.	PART NO.	DESCRIPTION	QTY.
1	QUB04012	BOLT	8
2	QUR01902	WASHER	16
3	QUE01302	NUT	8
4	88255	BUMPER	1
5	QUG02340	GROMMET	1

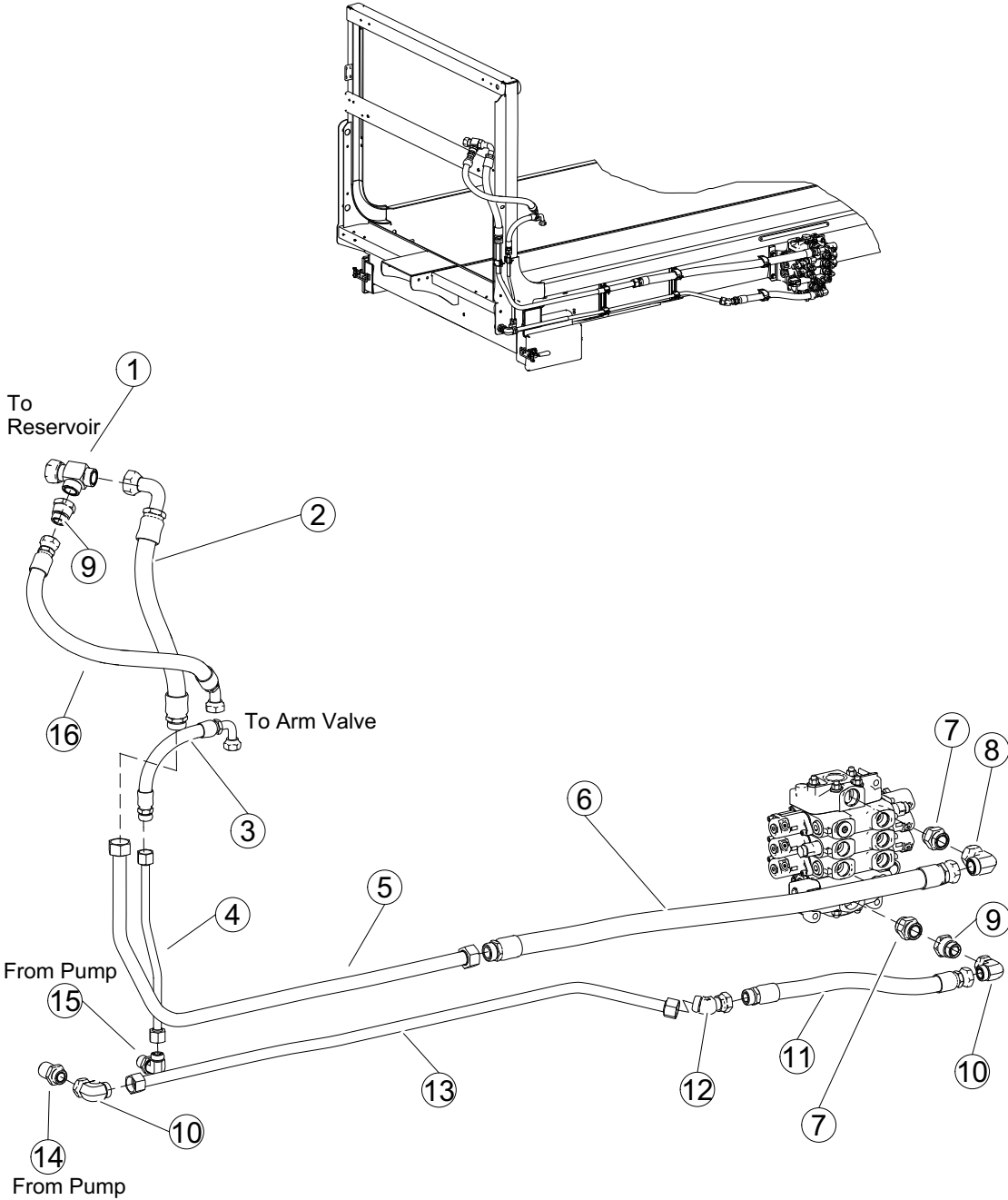
SECTION 1**FIRE EXTINGUISHER - 20 lb. ABC**



REF. NO.	PART NO.	DESCRIPTION	QTY.
1	QUB03400	BOLT	4
2	QUR01900	WASHER	8
3	QUE01300	NUT	4
4	CIE02811	BRACKET - 20lb	1

SECTION 2

PRESSURE/RETURN HYDRAULICS (Valve to Front of Body)

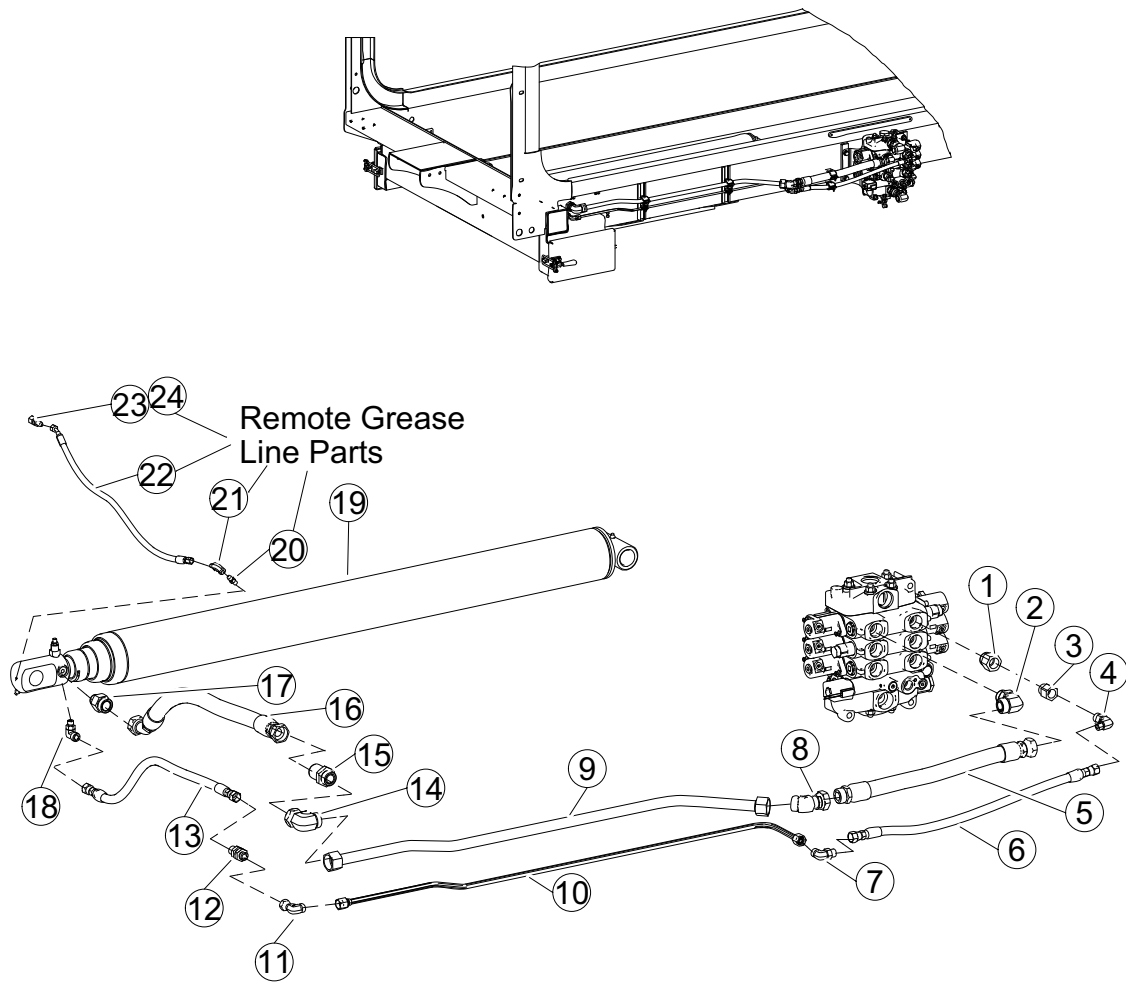


PRESSURE/RETURN HYDRAULICS (Valve to Front of Body)

REF. NO.	PART NO.	DESCRIPTION	QTY.
1	HYF28055	TEE	1
2	156445	HOSE	1
3	156444	HOSE	1
4	156443	TUBE	1
5	88195	TUBE	1
6	88292	HOSE	1
7	HYF02146	ADAPTER	2
8	HYF07815	ELBOW	1
9	HYF02161	ADAPTER	2
10	HYF07610	ELBOW	2
11	88293	HOSE	1
12	HYF07860	ELBOW	1
13	88196	TUBE	1
14	HYF04995	ADAPTER	1
15	HYF06807	ELBOW	1
16	156446	HOSE	1

SECTION 2

PACKER HYDRAULICS

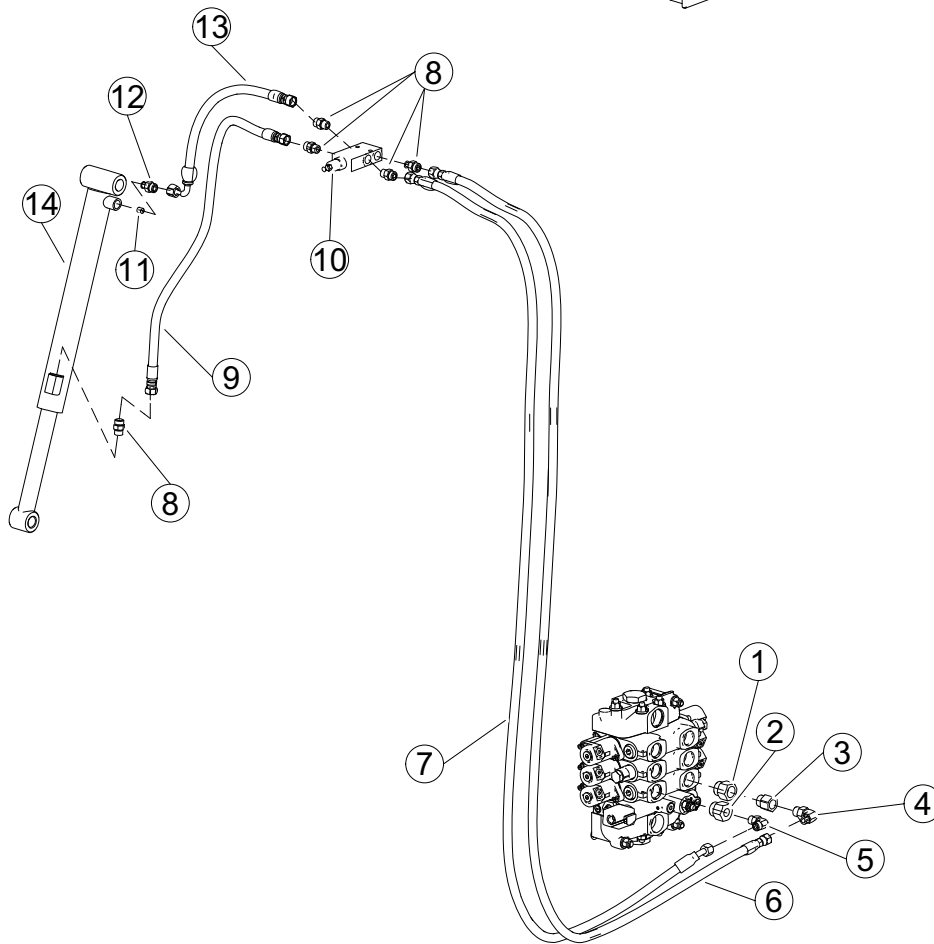
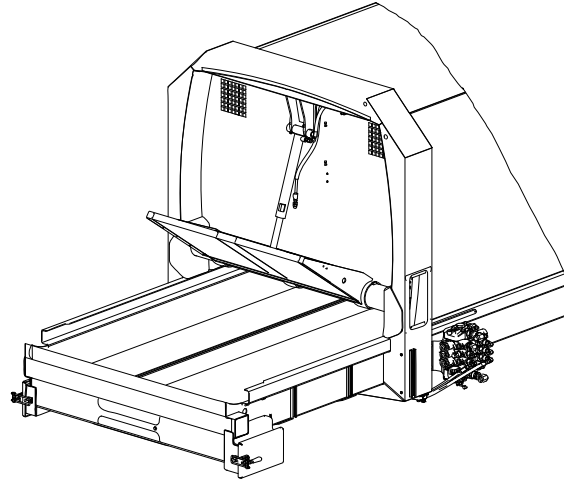


PACKER HYDRAULICS

REF. NO.	PART NO.	DESCRIPTION	QTY.
1	HYF05150	ADAPTER	1
2	HYF07605	ELBOW	1
3	HYF05146	ADAPTER	1
4	HYF07451	ELBOW	1
5	88279	HOSE	1
6	88280	HOSE	1
7	HYF05126	ELBOW	1
8	HYF07860	ELBOW	1
9	88275	TUBE	1
10	88276	TUBE	1
11	HYF06803	ELBOW	1
12	HYF04891	CONNECTOR	1
13	88278	HOSE	1
14	HYF07610	ELBOW	1
15	HYF04995	CONNECTOR	1
16	88277	HOSE	1
17	HYF04985	ADAPTER	1
18	HYF05131	ELBOW	1
19	HYC01352-01	CYLINDER	1
20	HYF00900	ADAPTER	1
21	HYF07900	ELBOW	1
22	156462	HOSE	1
23	HYF19960	NUT	1
24	HYF19950	FITTING	1

SECTION 2

CRUSHER HYDRAULICS

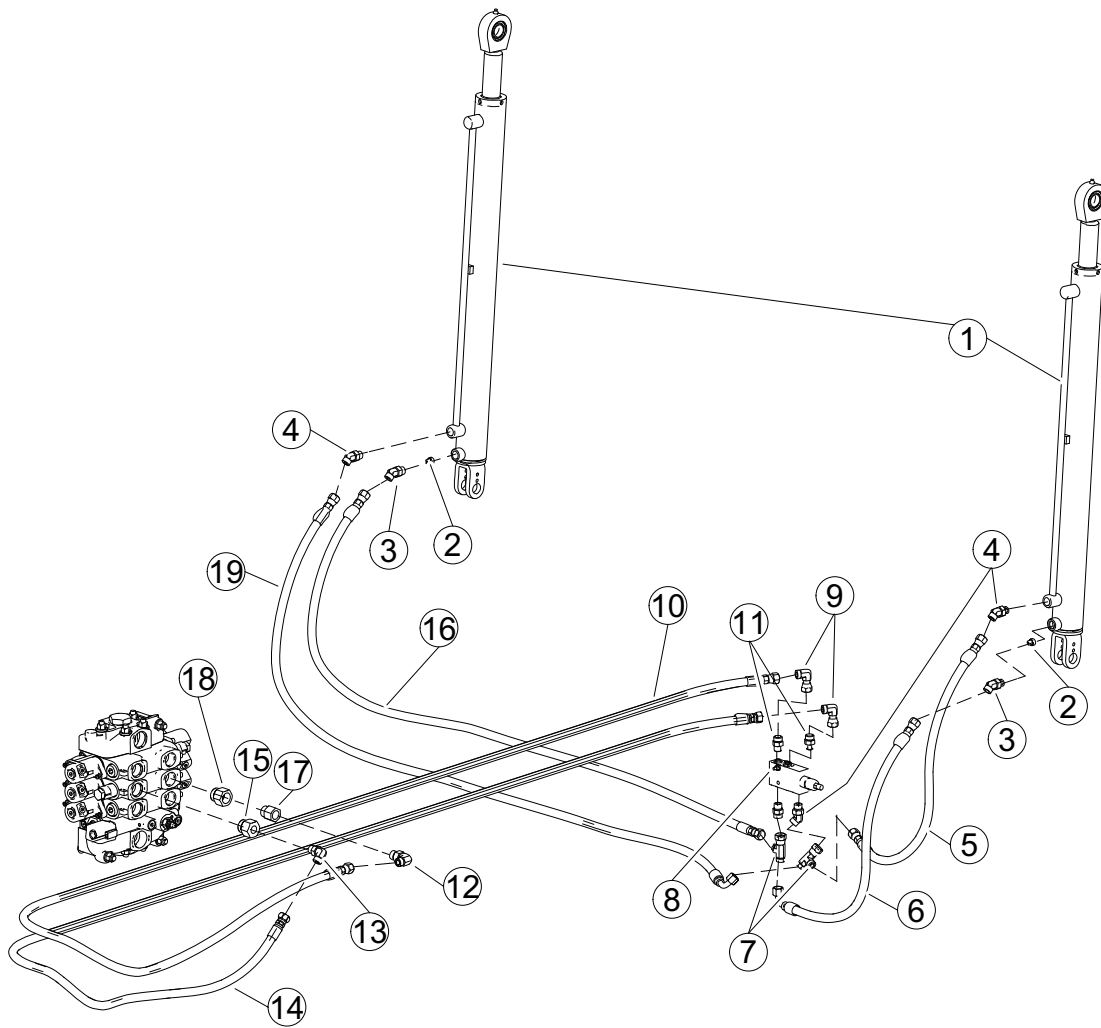
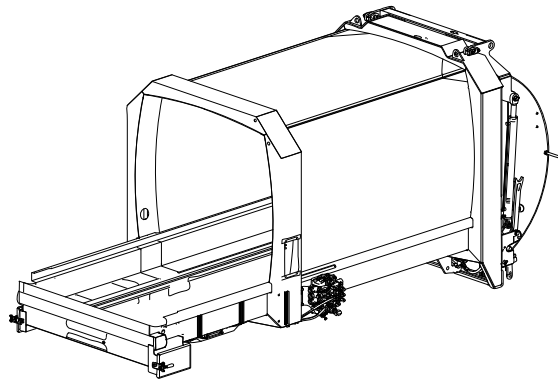


CRUSHER HYDRAULICS

REF. NO.	PART NO.	DESCRIPTION	QTY.
1	HYF05150	ADAPTER	1
2	HYF05149	ADAPTER	1
3	HYF05146	ADAPTER	1
4	HYF07451	ELBOW	1
5	HYF05126	ELBOW	1
6	93865	HOSE	1
7	93864	HOSE	1
8	HYF05171	ADAPTER	5
9	88284	HOSE	1
10	HYV02670	VALVE, Holding	1
11	66979	PLUG, Orificed	1
12	162219	ADAPTER, Threaded	1
13	160742	HOSE	1
14	HYC00198-02	CYLINDER	1

SECTION 2

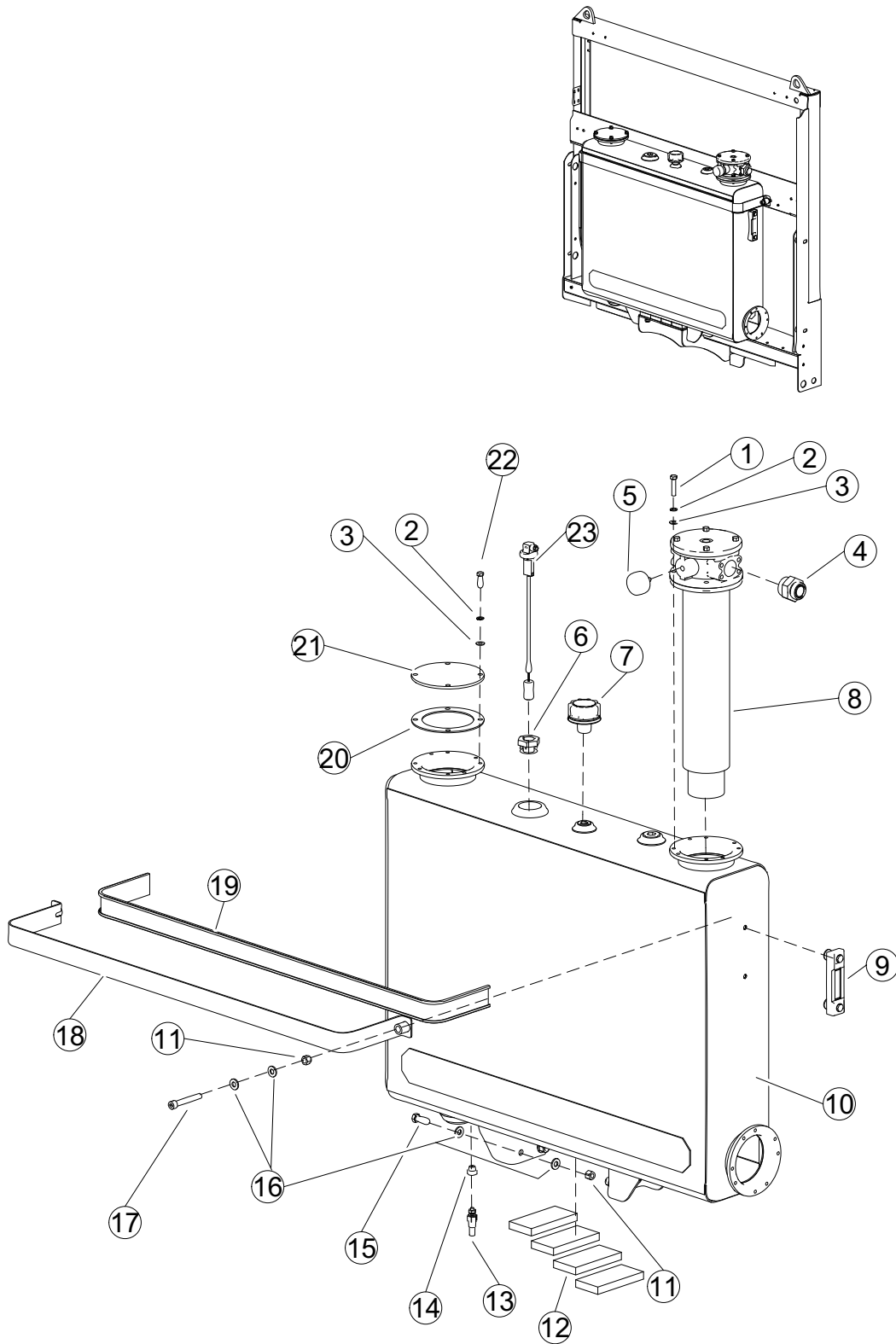
TAILGATE HYDRAULICS



TAILGATE HYDRAULICS

REF. NO.	PART NO.	DESCRIPTION	QTY.
1	HYC00330	CYLINDER	2
2	15358	PLUG, Orificed	2
3	88265	ELBOW, Threaded	2
4	HYF02955	ELBOW	2
5	88270	HOSE	1
6	88269	HOSE	1
7	HYF06110	TEE	2
8	HYV02670	VALVE, Holding	1
9	HYF06803	ELBOW	2
10	93867	HOSE	1
11	HYF05171	ADAPTER	3
12	HYF07451	ELBOW	1
13	HYF05126	ELBOW	1
14	160729	HOSE	1
15	HYF05149	ADAPTER	1
16	88271	HOSE	1
17	HYF05146	ADAPTER	1
18	HYF05150	ADAPTER	1
19	88272	HOSE	1

SECTION 2
RESERVOIR

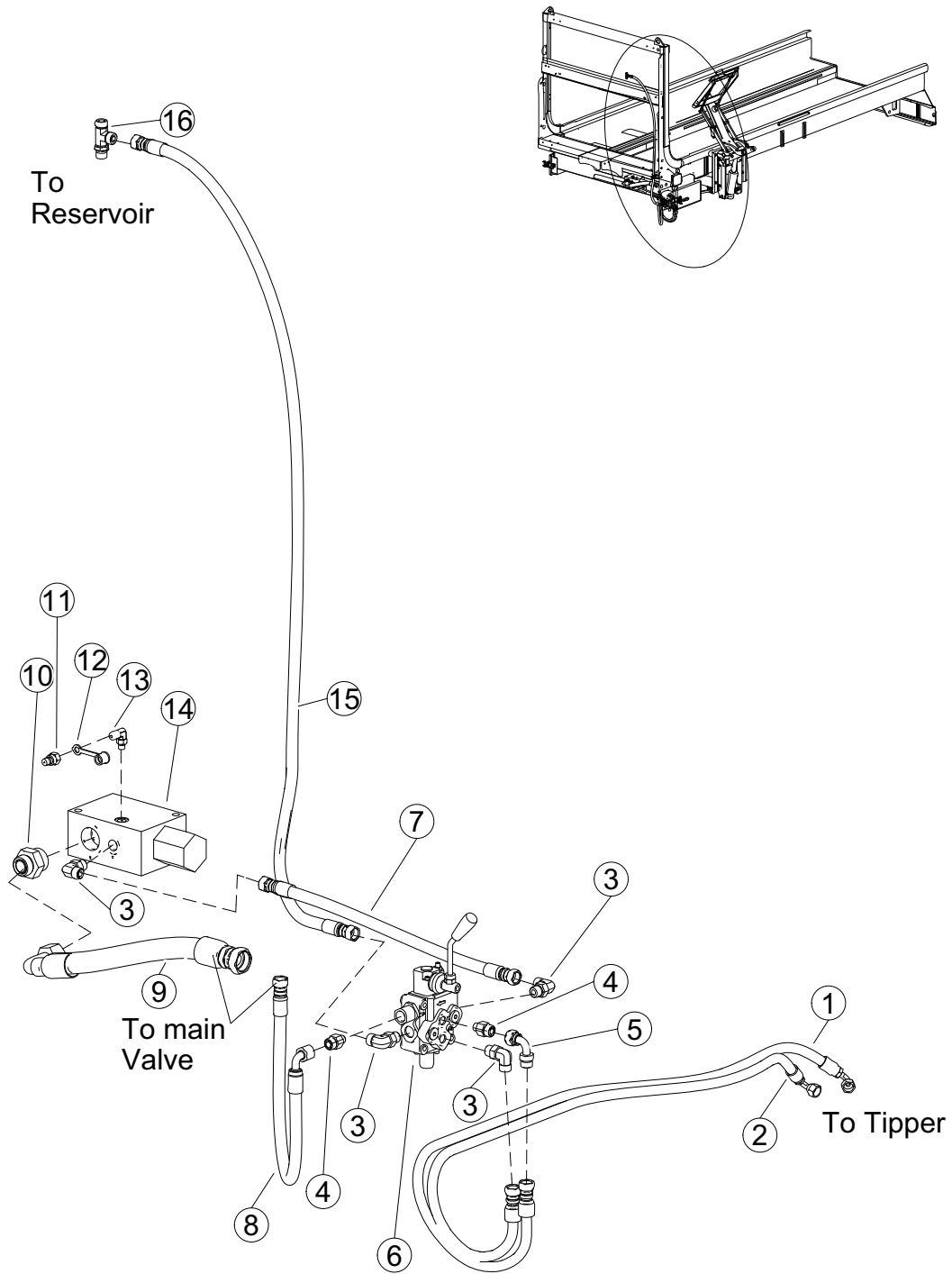


SECTION 2
RESERVOIR

REF. NO.	PART NO.	DESCRIPTION	QTY.
1	QUB03730	BOLT	4
2	QUR01272	WASHER	8
3	QUR01902	WASHER	8
4	HYF08796	ADAPTER	1
5	HYJ01050	GAGE	1
6	97680	BUSHING, Sensor	1
7	HYB00725	CAP	1
8	HYF20015	ASSEMBLY, Hydraulic Filter	1
9	HYJ00150	ASSEMBLY, Sight Gage (Incls. Bolts and Seal Washers)	1
10	86921	WELDMENT, Reservoir	1
11	QUE01500	NUT	6
12	CIC01975	PAD, Rubber	4
13	CIJ00455	OIL Temperature Sending Unit	1
14	HYF01895	ADAPTER	1
15	QUB04503	BOLT	4
16	QUR01912	WASHER	12
17	QUB25025	BOLT	2
18	156408	BRACKET	1
19	CII001110	PAD, Rubber	Per Inch
20	HYF20025	GASKET	1
21	86238	COVER	1
22	QUB03501	BOLT	4
23	31110	OIL Level Sensor	1

SECTION 2

TIPPER HYDRAULICS

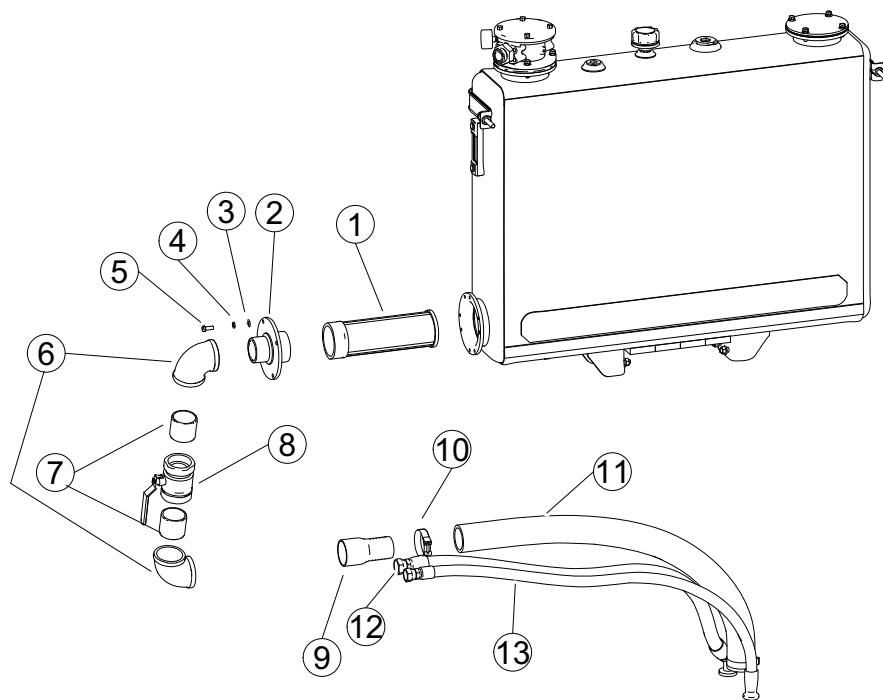


TIPPER HYDRAULICS

REF. NO.	PART NO.	DESCRIPTION	QTY.
1	163659	HOSE	1
2	163658	HOSE	1
3	HYF05126	ELBOW	4
4	HYF05172	ADAPTER	2
5	HYF08051	ELBOW	1
6	HYV03510	VALVE, Directional	1
7	88233	HOSE	1
8	88231	HOSE	1
9	163661	HOSE	1
10	HYF08554	ADAPTER	1
11	HYF10200	CONNECTOR	1
12	HYF10050	CAP	1
13	HYF27050	ELBOW	1
14	HYV02590	VALVE, Flow Divider	1
15	163660	HOSE	1
16	HYF05646	TEE	1

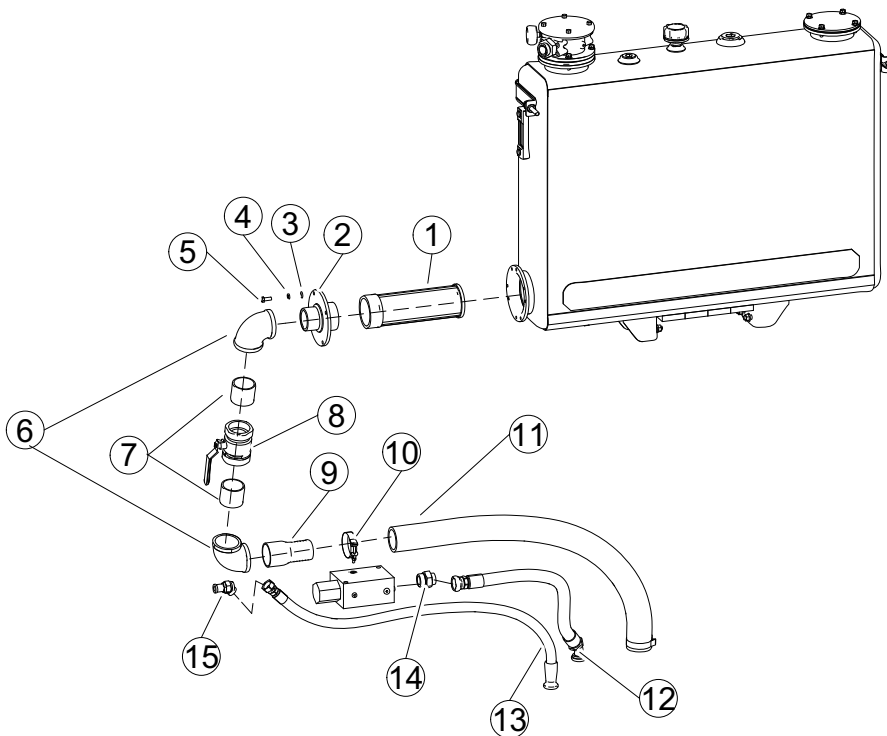
SECTION 2

CHASSIS HYDRAULICS - INTERNATIONAL4300



REF. NO.	PART NO.	DESCRIPTION	QTY.
1	HYF15675	STRAINER	1
2	26934	ADAPTER, Flange	1
	HYF20025	GASKET (Not Shown)	1
3	QUR01902	WASHER	4
4	QUR01272	WASHER	4
5	QUB03401	BOLT	4
6	HYF13152	ELBOW	2
7	HYF13185	NIPPLE	2
8	HYV01850	VALVE	1
9	HYF14050	NIPPLE, King	1
10	HYC00120	CLAMP	2
11	41653	HOSE	1
12	86358	HOSE	1
13	86359	HOSE	1

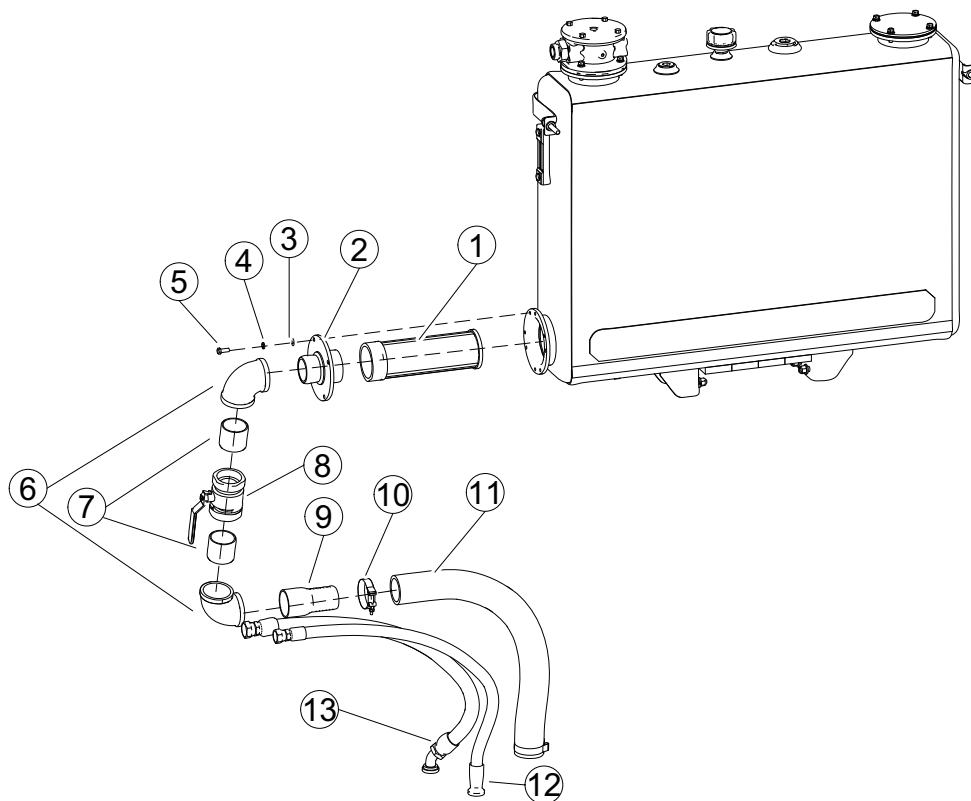
CHASSIS HYDS. - INTERNATIONAL 4300 WITH TIPPER



REF. NO.	PART NO.	DESCRIPTION	QTY.
1	HYF15675	STRAINER	1
2	26934	ADAPTER, Flange	1
	HYF20025	GASKET (Not Shown)	1
3	QUR01902	WASHER	4
4	QUR01272	WASHER	4
5	QUB03401	BOLT	4
6	HYF13152	ELBOW	2
7	HYF13185	NIPPLE	2
8	HYV01850	VALVE	1
9	HYF14050	NIPPLE, King	1
10	HYC00120	CLAMP	2
11	41653	HOSE	1
12	165839	HOSE	1
13	86359	HOSE	1
14	HYF08554	ADAPTER	1
15	HYF03002	ELBOW	1

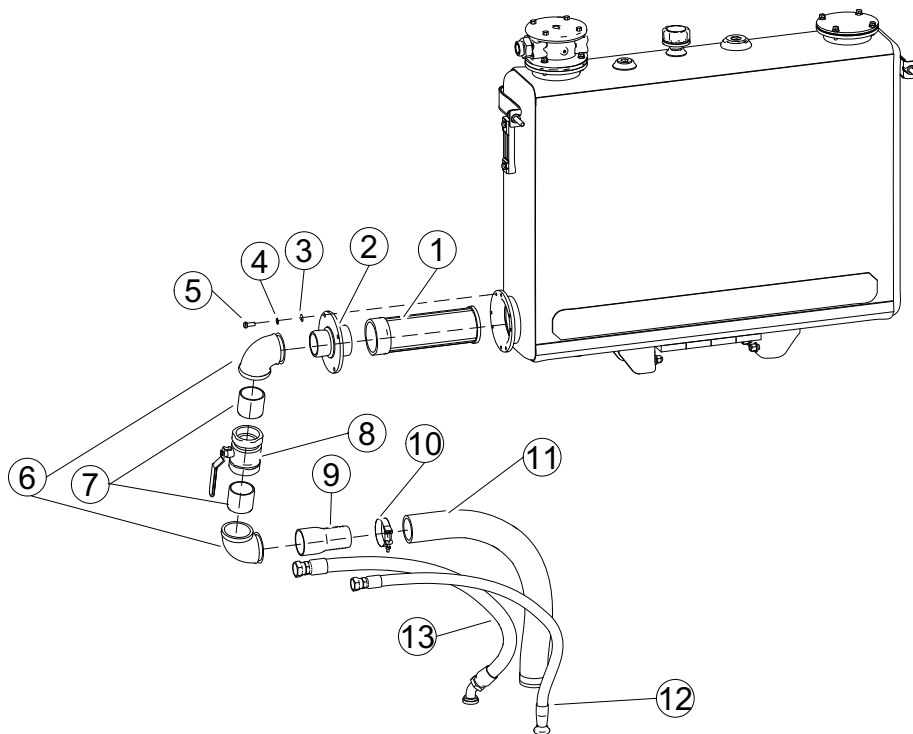
SECTION 2

CHASSIS HYDS. - HINO 338



REF. NO.	PART NO.	DESCRIPTION	QTY.
1	HYF15675	STRAINER	1
2	26934	FLANGE	1
	HYF20025	GASKET (Not Shown)	1
3	QUR01902	WASHER	4
4	QUR01272	WASHER	4
5	QUB03401	BOLT	4
6	HYF13152	ELBOW	2
7	HYF13185	NIPPLE	2
8	HYV01850	VALVE	1
9	HYF14050	NIPPLE, King	1
10	HYC00120	CLAMP	2
11	103119	HOSE	1
12	156489	HOSE	1
13	156490	HOSE	1

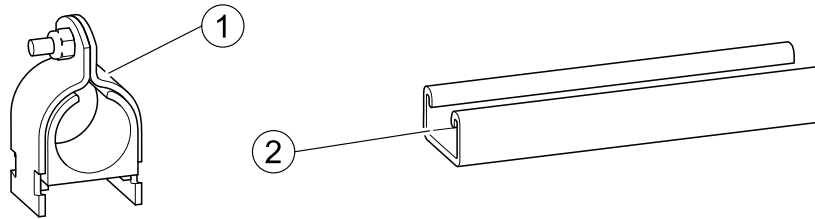
CHASSIS HYDS - FREIGHTLINER M2 106



REF. NO.	PART NO.	DESCRIPTION	QTY.
1	HYF15675	STRAINER	1
2	26934	FLANGE	1
	HYF20025	GASKET (Not Shown)	1
3	QUR01902	WASHER	4
4	QUR01272	WASHER	4
5	QUB03401	BOLT	4
6	HYF13152	ELBOW	2
7	HYF13185	NIPPLE	2
8	HYV01850	VALVE	1
9	HYF14050	NIPPLE, King	1
10	HYC00120	CLAMP	2
11	103119	HOSE	1
12	156489	HOSE	1
13	156490	HOSE	1

SECTION 2

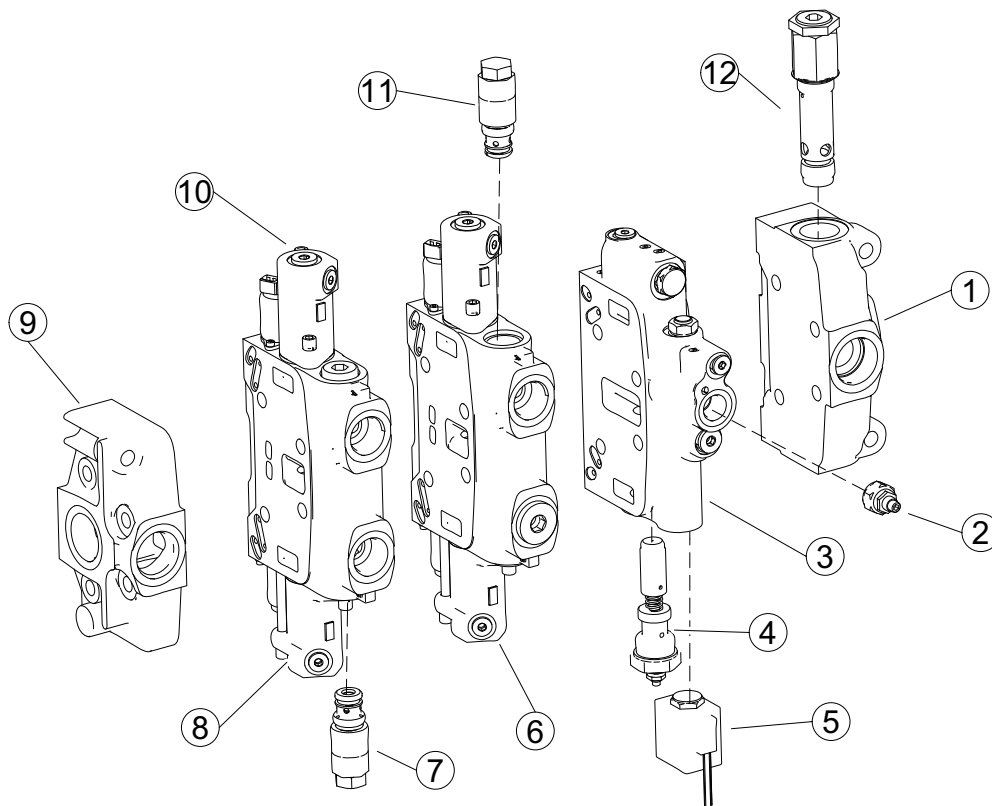
CLAMPS and ACCESSORIES



REF. NO.	PART NO.	DESCRIPTION	QTY.
1	HYS00150	TUBE or HOSE O.D. =.38"	A/R
	HYS00200	TUBE or HOSE O.D. =.50"	A/R
	HYS00250	TUBE or HOSE O.D. =.62"	A/R
	HYS00300	TUBE or HOSE O.D. =.75"	A/R
	HYS00305	TUBE or HOSE O.D. =1.05"	A/R
	HYS00400	TUBE or HOSE O.D. =1.00"	A/R
	HYS00425	TUBE or HOSE O.D. =1.12"	A/R
	HYS00450	TUBE or HOSE O.D. =1.25"	A/R
	HYS00453	TUBE or HOSE O.D. =1.38"	A/R
	HYS00455	TUBE or HOSE O.D. =1.50"	A/R
	HYS00460	TUBE or HOSE O.D. =.84"	A/R
	HYS00490	TUBE or HOSE O.D. =1.62"	A/R
	HYS00500	TUBE or HOSE O.D. =1.75"	A/R
	HYS00550	TUBE or HOSE O.D. =2.00"	A/R
	HYS00560	TUBE or HOSE O.D. =2.50"	A/R
	HYS00565	TUBE or HOSE O.D. =3.12"	A/R
	HYS00566	TUBE or HOSE O.D. =3.62"	A/R
2	HYS00570	CLAMP, Rail - 10 Foot	A/R

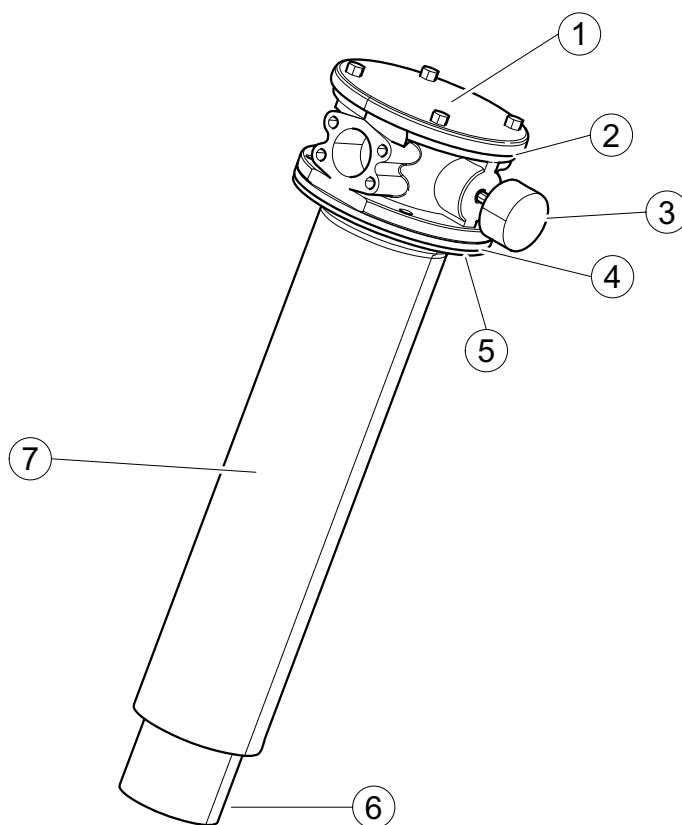
SECTION 3

CONTROL VALVE - HYV05171 - 2 Section - Electric



REF. NO.	PART NO.	DESCRIPTION	QTY.
1	HYV05111	SECTION, Inlet	1
2	HYV05706	CARTRIDGE, Pressure Reducer	1
3	HYV05101-01	SECTION, Pilot Pressure	1
4	HYV05704	CARTRIDGE, Pilot Pressure	1
5	HYV05700	SOLENOID, Pilot Pressure	1
6	HYV05102	SECTION, Tailgate Lift	1
7	HYV05719	CARTRIDGE, Relief - 1,500 PSI	1
8	HYV05124	SECTION, Packer	1
9	HYV05113	SECTION, Outlet	1
10	HYV05712	SOLENOID, Section	4
11	HYV05115	CARTRIDGE, Velocity Fuse	1
12	HYV05702	CARTRIDGE, Main Relief - 3,000 PSI	1
	HYV05732	STUD - 2 Section	4
	HYV05171	ASSEMBLY, Valve - Complete	1
	HYJ04104	KIT, Section Seal	4

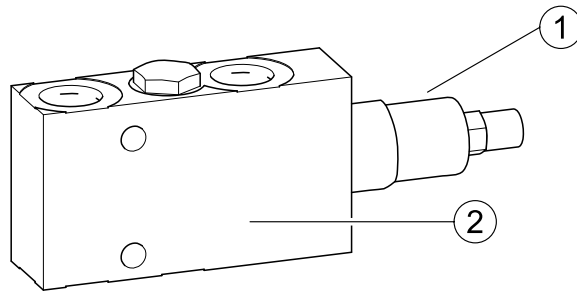
RETURN FILTER - HYF20015



REF. NO.	PART NO.	DESCRIPTION	QTY.
1	HYF20016	COVER (Includes 25 PSI bypass)	1
2	HYF20017	O-RING (Located under Cover)	1
3	HYJ01050	GAUGE	1
4	HYJ01610	O-RING (Square - Housing to Canister)	1
5	HYF20025	GASKET (Flat - Canister to Tank Flange)	1
6	HYF20018	VALVE, Bypass (Located on Bottom of Filter)	1
7	HYF20015-01	ASSEMBLY, Filter - Complete	1
	HYF20030-02	ELEMENT, Replacement - 10 Micron - Std.	1
	HYF20029	ELEMENT, Replacement - 5 Micron	1
	HYF20034	ELEMENT, Replacement - 3 Micron	1

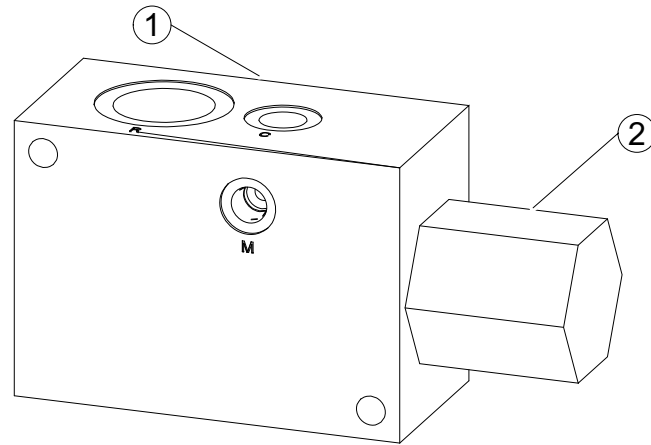
SECTION 3

HOLDING VALVE - HYV02670



REF. NO.	PART NO.	DESCRIPTION	QTY.
1		CARTRIDGE	1
2	HYV02670	ASSEMBLY, Holding Valve- Complete	1

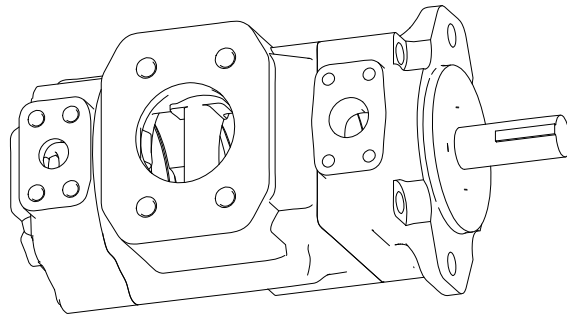
DIVERTER VALVE - HYV02590



REF. NO.	PART NO.	DESCRIPTION	QTY.
1	HYV2590	ASSEMBLY, Valve - Complete	1
2		CARTRIDGE	1

SECTION 4

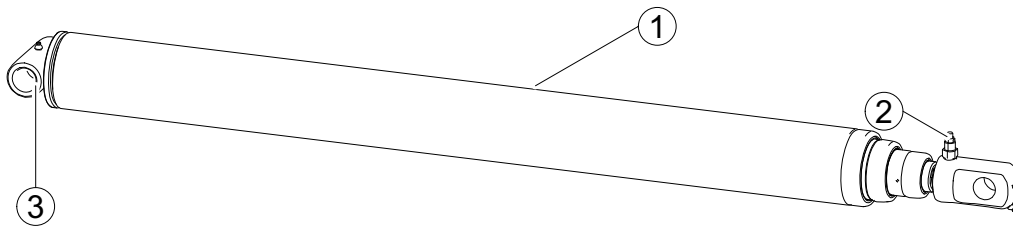
PUMP - HYP01489-01



REF. NO.	PART NO.	DESCRIPTION	QTY.
1	HYP01489-01	ASSEMBLY, Pump -Complete KIT, Seal	1 1

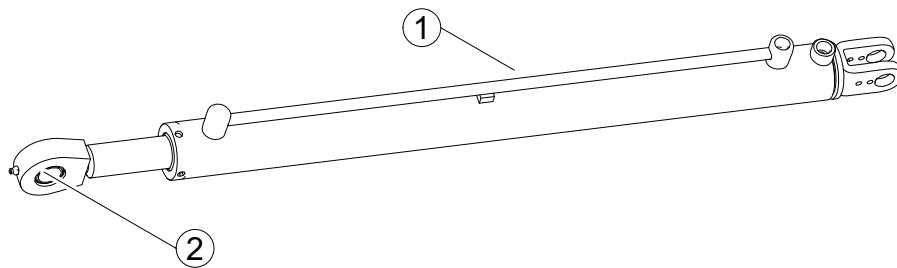
SECTION 5

PACKER CYLINDER - HYC01352-01



REF. NO.	PART NO.	DESCRIPTION	QTY.
1	HYC01352-01	ASSEMBLY, Cylinder - Complete	1
2		CARTRIDGE	1
3		BUSHINGS	2
	HYJ01352-01	KIT, Seal	1

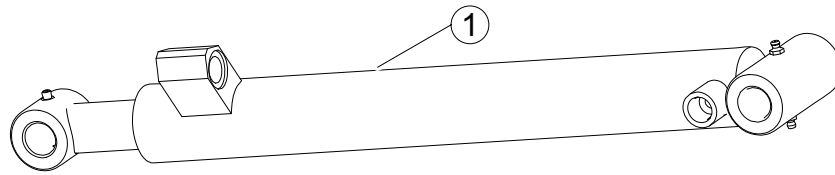
TAILGATE CYLINDER - HYC00330



REF. NO.	PART NO.	DESCRIPTION	QTY.
1	HYC00330	ASSEMBLY, Cylinder - Complete	1
2		BEARING	1
		KIT, Seal	1

SECTION 5

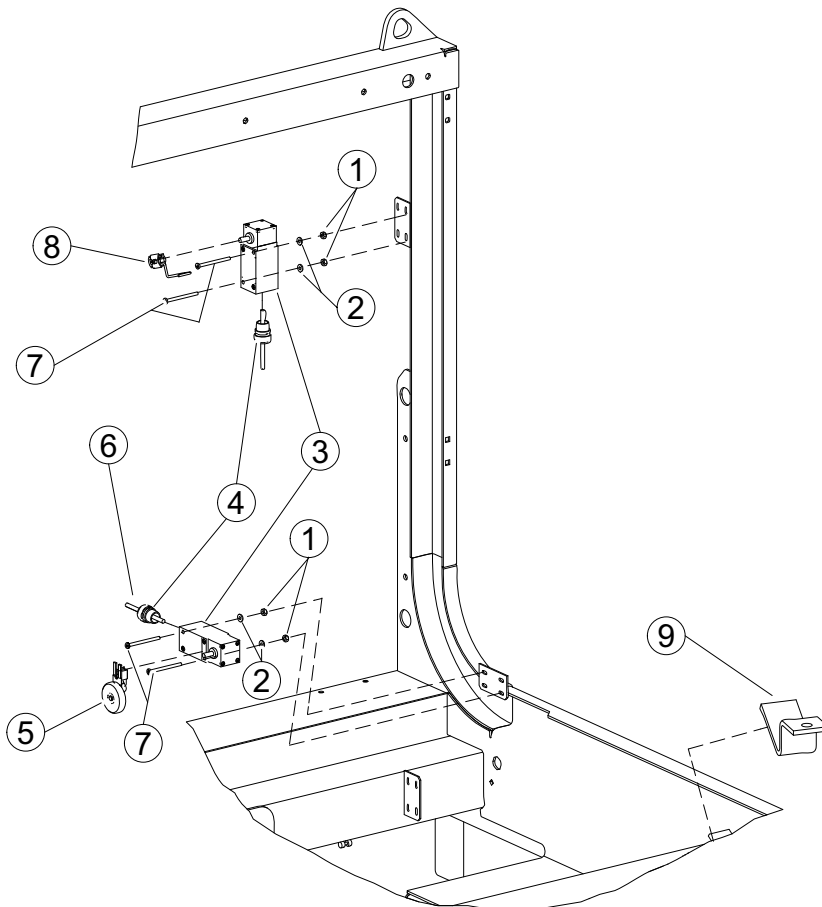
CRUSHER CYLINDER - HYC00198-02



REF. NO.	PART NO.	DESCRIPTION	QTY.
1	HYC00198-02	ASSEMBLY, Cylinder - Complete	1
	HYJ00198-02	KIT, Seal	1

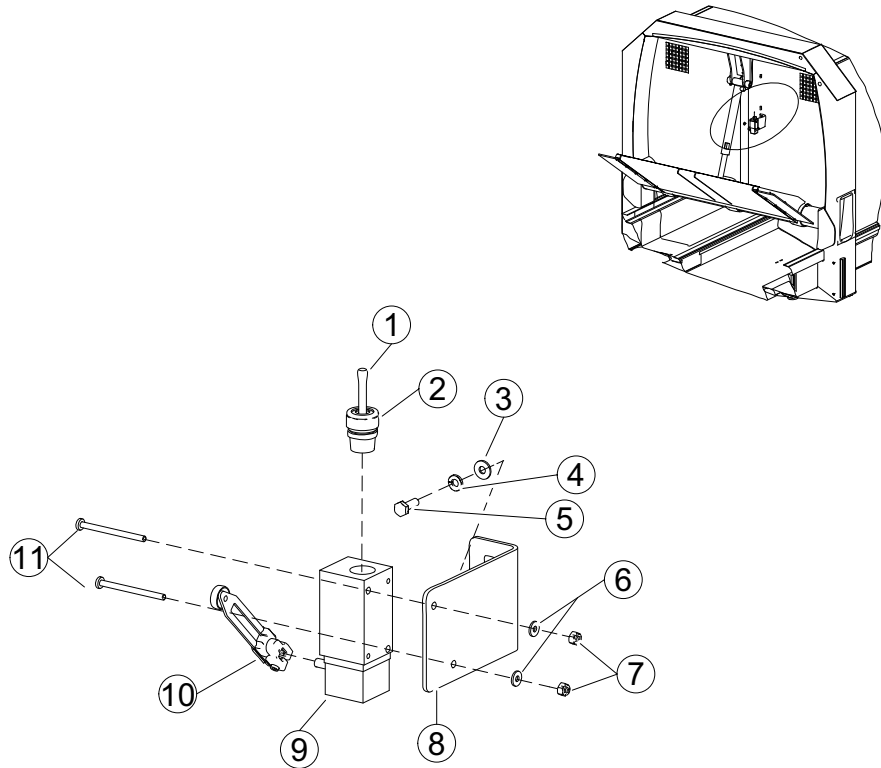
SECTION 6

PACKER EXTEND/RETRACT SWITCHES



REF. NO.	PART NO.	DESCRIPTION	QTY.
1	QUE01070	NUT	4
2	QUR01600	WASHER	4
3	ELI00550-01	SWITCH	2
4	ELC00140	CONNECTOR	2
5	ELI00853	ASSEMBLY Actuator - Roller	1
6	74057	HARNESS	2
7	QUV01925	BOLT	4
8	59175	ACTUATOR - Bent	1
	ELI00850	ACTUATOR - Straight	1
9	156460	TARGET, Packer Switch	1

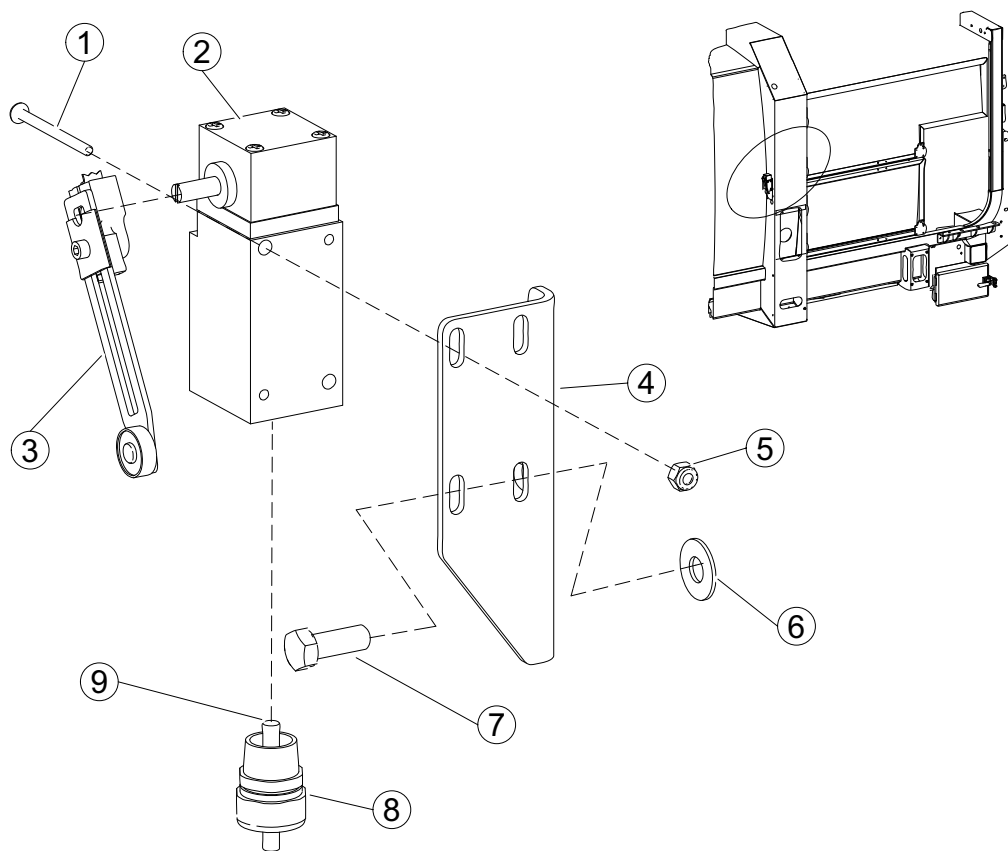
CRUSHER SWITCH



REF. NO.	PART NO.	DESCRIPTION	QTY.
1	74057	HARNESS	1
2	ELC00140	CONNECTOR	1
3	QUR01695	WASHER	2
4	QUR01261	WASHER	2
5	QUB01990	BOLT	2
6	QUR01600	WASHER	2
7	QUE01070	NUT	2
8	156453	BRACKET	1
9	ELI00550-01	SWITCH	1
10	ELI00852	ASSEMBLY, Actuator - Roller	1
11	QUV00768	BOLT	2

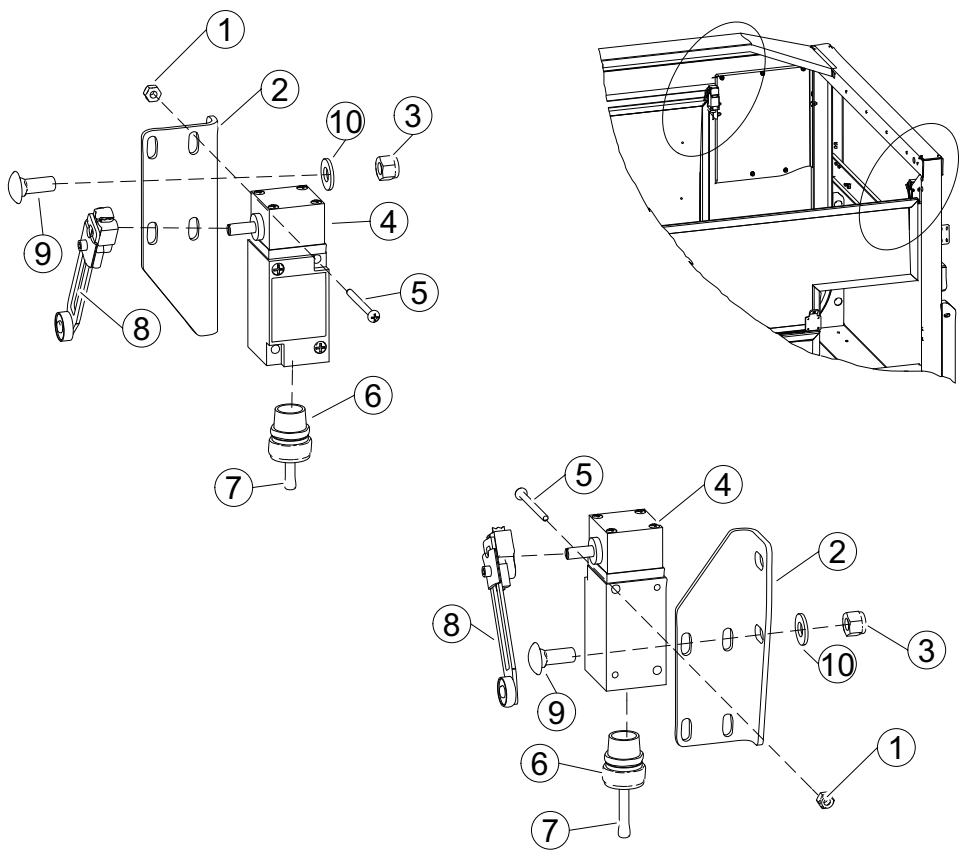
SECTION 6

UPPER SIDE DOOR OPEN SWITCH



REF. NO.	PART NO.	DESCRIPTION	QTY.
1	QUV01925	BOLT	2
2	ELC00550-01	SWITCH	1
3	ELI00852	ACTUATOR	1
4	88315	BRACKET	1
5	QUE01070	NUT	2
6	QUR01900	WASHER	2
7	QUB03401	BOLT	2
8	ELC00140	CONNECTOR	1
9	74057	HARNESS	1

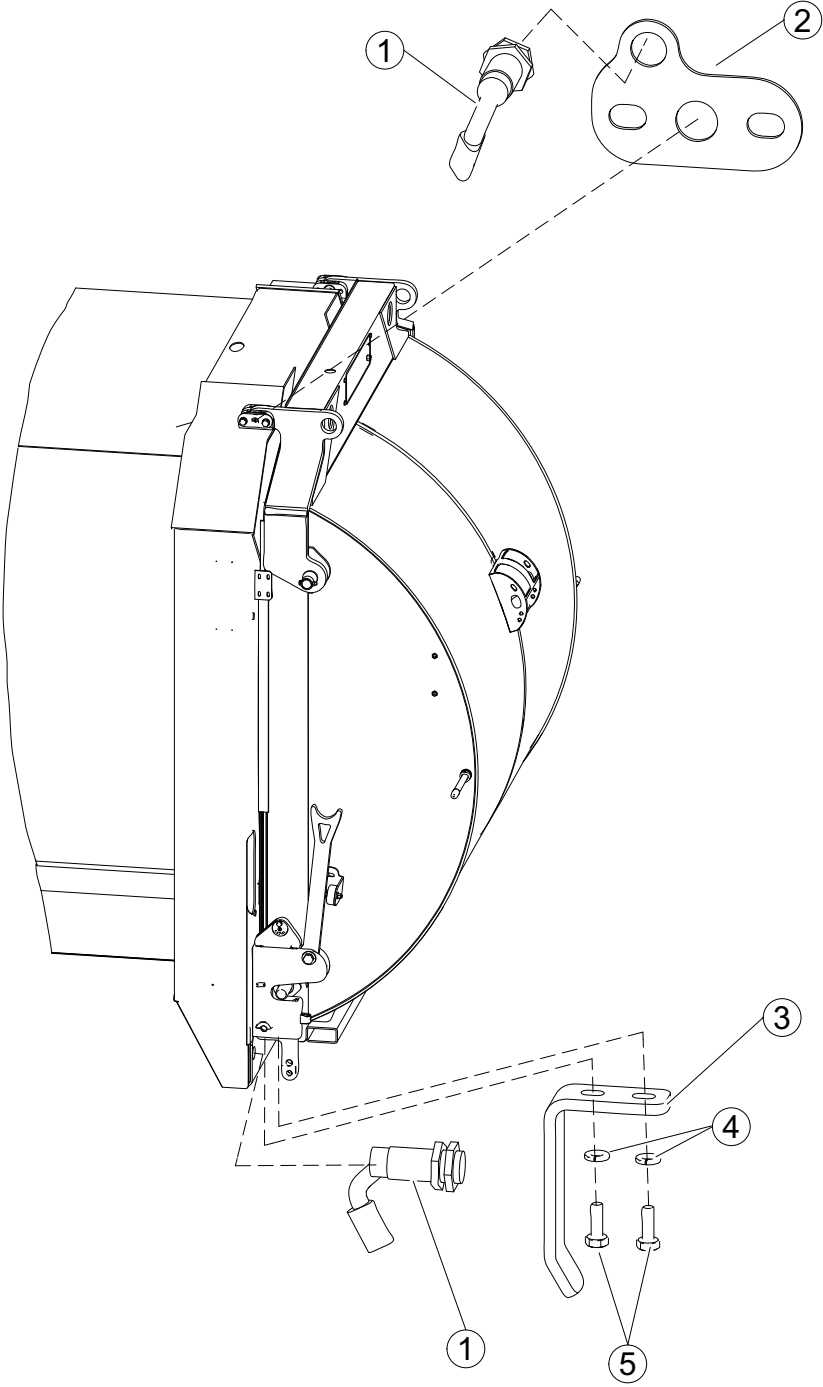
SIDE DOOR CLOSED SWITCHES



REF. NO.	PART NO.	DESCRIPTION	QTY.
1	QUE01070	NUT	4
2	88315	BRACKET	2
3	QUE01302	NUT	4
4	ELC00550-01	SWITCH	2
5	QUV01925	BOLT	4
6	ELC00140	CONNECTOR	2
7	151700	HARNESS	2
8	ELI00852	ACTUATOR	2
9	QUB11935	BOLT	4
10	QUR01902	WASHER	4

SECTION 6

TAILGATE LOCKED AND FULLY OPEN SENSORS

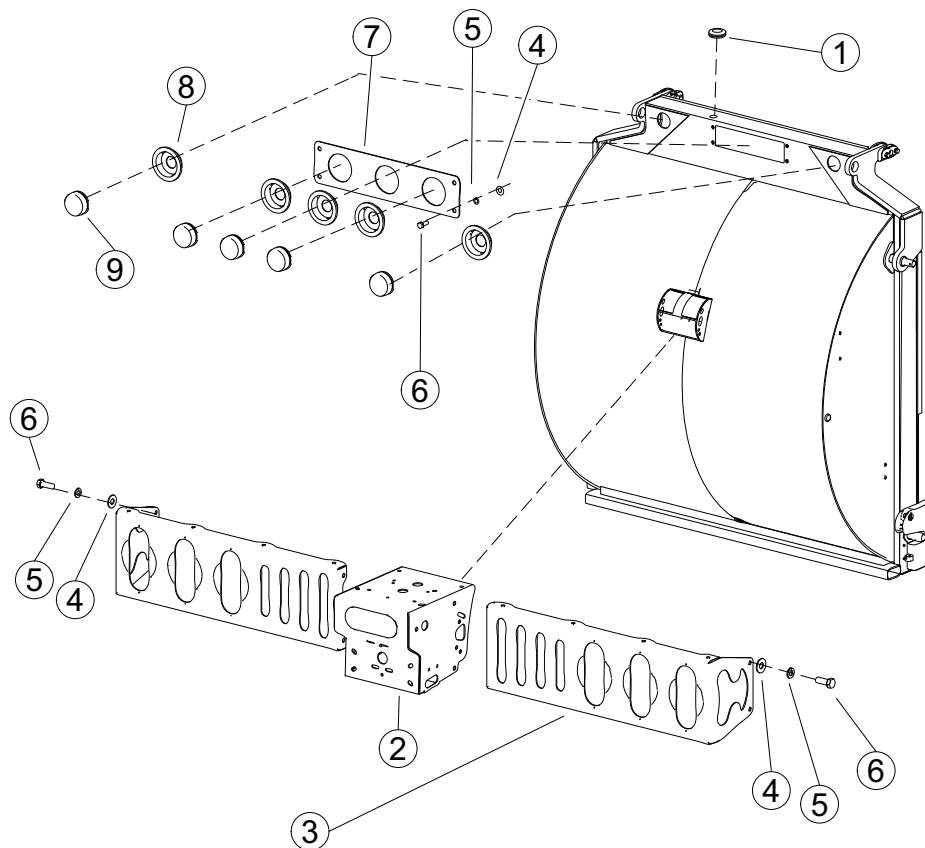


TAILGATE LOCKED AND FULLY OPEN SENSORS

REF. NO.	PART NO.	DESCRIPTION	QTY.
1	45103-03	SENSOR, Proximity	2
2	156454	BRACKET, TG Fully Open	1
3	153358	BRACKET, TG Locked	1
4	QUR01261	WASHER	2
5	QUB01990	BOLT	2

SECTION 6

LIGHT BARS - UPPER and MID



REF. NO.	PART NO.	DESCRIPTION	QTY.
1	QUG02300	GROMMET	1
2	69213	BRACKET	1
3	156450	LIGHT BAR - MID	2
4	QUR01901	WASHER	12
5	QUR01274	WASHER	12
6	QUB03399	BOLT	12
7	156447	LIGHT BAR - UPPER	1
8	QUG02700	GROMMET, Light - 2.5" Dia.	5
9	ELL02570	LIGHT, Red - 2.5" Dia. - Incandescent	5

MISCELLANEOUS ELECTRICAL COMPONENTS

REF. NO.	PART NO.	DESCRIPTION	QTY.
1	ELR01020	ALARM BUZZER	1
2	ELD00280-01	BREAKER, Circuit - 7A - Resettable	A/R
	ELD00305-01	BREAKER, Circuit - 10A - Resettable	A/R
	ELD00405-01	BREAKER, Circuit - 15A - Resettable	A/R
	ELF00301	FUSE - ATO - 35 Amp	A/R
3	ELS00451	BLOCK, Fuse - 6 Space	A/R
4	PNJ01500	JOYSTICK	A/R
5	ELR00825	RELAY - 12V - 85 Amp	A/R
6	157502	RESISTOR, End Line - 120 Ohms	A/R
7	ELR00780	BASE, Mini Relay	A/R
8	ELR00775	RELAY, Mini - 30 Amp	A/R
9	66871	DIODE PACK - 3	A/R
	66870	DIODE PACK - 5 to 1	A/R
	92512	DIODE PACK - 8	A/R
	71825	DIODE PACK - 4 to 1	A/R
	ELC05110	DIODE PACK - 1	A/R
10	ELB02450	BUTTON GUARD	A/R
11	ELB02000	PUSHBUTTON, Yellow - Complete	A/R
12	ELB02300	PUSHBUTTON, Green - Complete	A/R
13	ELB02180	PUSHBUTTON, Red - Complete	A/R

labrie*plus* - USA

1981 W. Snell Road
Oshkosh, WI. 54904

Mailing Address:
P.O. Box 2785
Oshkosh, WI. 54903-2785

Parts, Service and Warranty
(During Business Hours)
7:00 A.M. to 7:00 P.M. Central Standard Time

Technical Support Service (24 Hours)

Toll Free: 1-800-231-2771
Telephone: 1-920-233-2770
General Fax: 1-920-232-2496
Sales Fax: 1-920-232-2498

labrie*plus* - Canada

175 Route du Pont
St-Nicolas, QC G7A 2T3

Mailing Address:
175 Route du Pont
St-Nicolas, QC G7A 2T3

Parts, Service and Warranty
(During Business Hours)
8:00 A.M. to 5:00 P.M. Eastern Standard Time

Technical Support Service (24 Hours)

Toll Free: 1-877-831-8250
Telephone: 1-418-831-8250
Service Fax: 1-418-831-1673
Parts Fax: 1-418-831-7561

