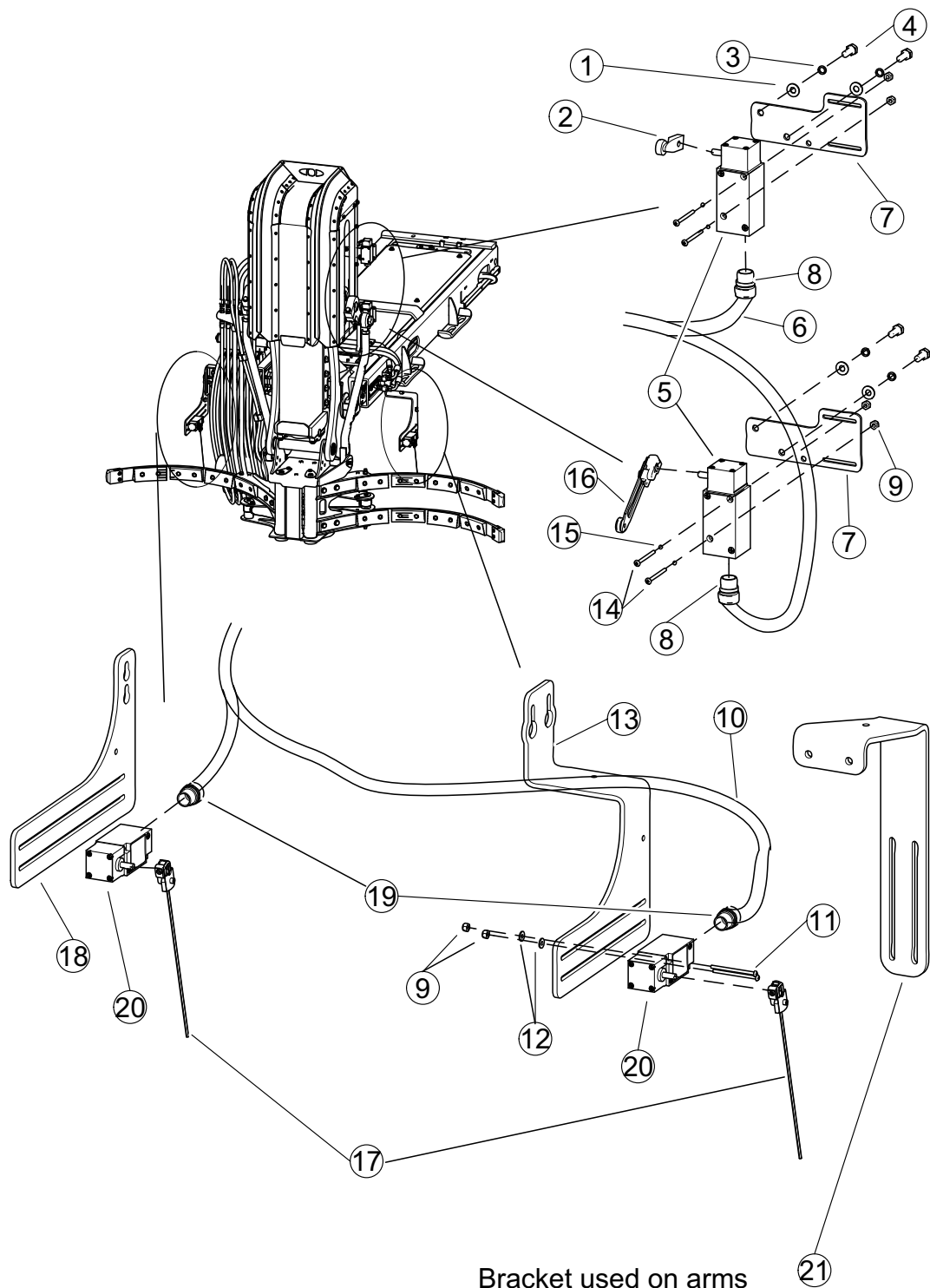


**SECTION 5**

**ARM ELECTRICAL**

**CLICK REF# / PART# / DESC**



Bracket used on arms  
BCB01170-02 and BCB01180-02

**ARM ELECTRICAL****CLICK ON REF# / PART# / DESC**

REF. NO.	PART NO.	DESCRIPTION	QTY.
1	QUR01800	WASHER	4
2	ELI00851	ACTUATOR, ARM - Short W/Roller	1
3	QUR01270	WASHER	4
4	QUB02701	BOLT	4
5	ELI00555-01	SWITCH - Arm Up/Down	2
6	152550	HARNESS - Upper Arm Limit Switches	1
7	140471	BRACKET	2
8	ELC00140	CONNECTOR	2
9	QUE01070	NUT	8
10	151816	HARNESS - Grabber Parked Limit Switches	1
11	QUV01950	BOLT	4
12	QUR01600	WASHER	4
13	84818	BRACKET	1
14	QUV01925	BOLT	4
15	QUR01255	WASHER	4
16	ELI00852	ACTUATOR, ARM - Long W/Roller	1
17	ELI00850-02	ACTUATOR, ARM - Rod Type	2
18	141040	BRACKET	1
19	ELC00200	CONNECTOR	2
20	ELI00550-01	SWITCH - Grabber Open	2
21	166788	BRACKET	1