

SECTION 4

ARM CTRL. VALVE - Valves: HYV04406-01, HYV04407-01, HYV04408-01, HYV04450-01, HYV04455-01 & HYV04459-01

Click on Ref# / Part# / Desc

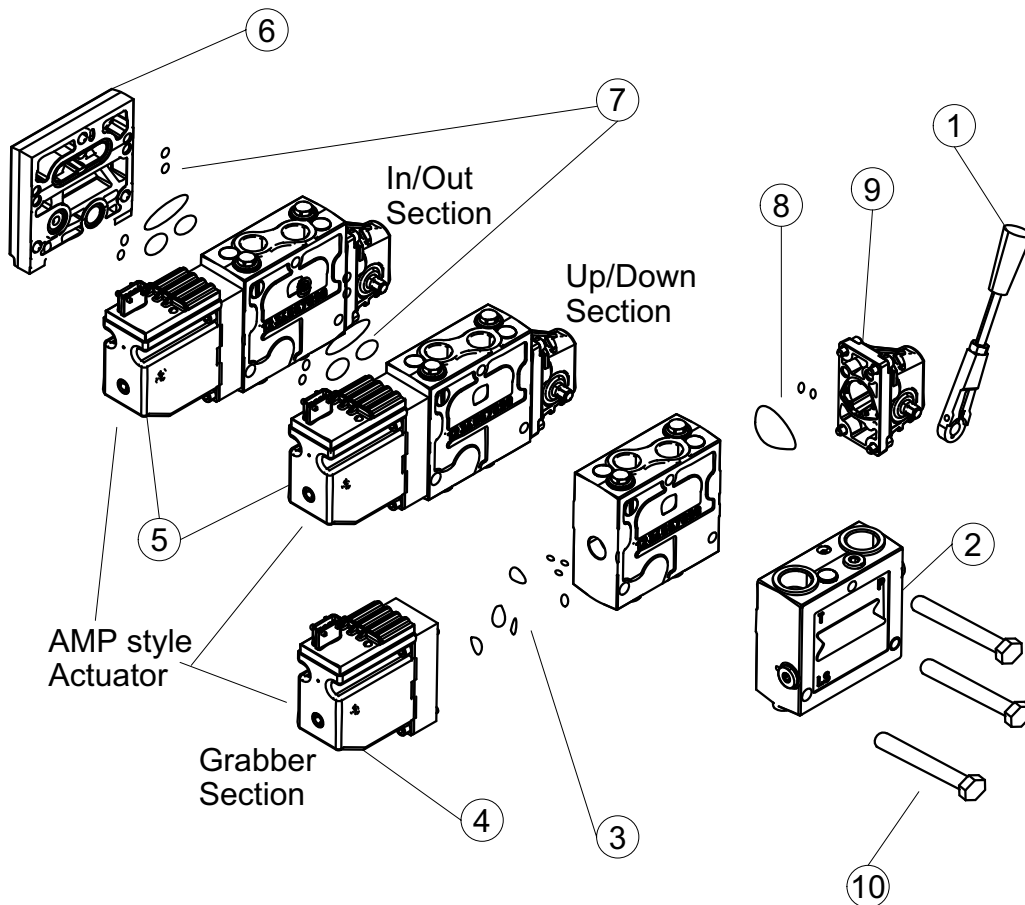
NOTE: New Style valves have a internal drain to reduce arm drifting, the entire valve assy. CAN replace old style valve assy. Individual New style section assy's, spools and inlet sections cannot replace Old style assy's.

New Style Valve Assy. P/N's:

HYC04406-01
HYC04407-01
HYC04408-01
HYC04450-01
HYC04455-01
HYC04459-01

Old Style Valve Assy. P/N's:

HYC04406
HYC04407
HYC04408
HYC04450
HYC04455
HYC04459



ARM CTRL. VALVE - Valves: HYV04406-01, HYV04407-01, HYV04408-01, HYV04450-01, HYV04455-01 & HYV04459-01

Click on Ref# / Part# / Desc

REF. NO.	PART NO.	DESCRIPTION	QTY.
1	HYV04316	HANDLE	A/R
2	HYV04462	SECT., Inlet - Used On valves: HYV04406-01, HYV04407-01, HYV4408-01 & HYV04459-01	1
	HYV04463	SECT., Inlet - Used On valves: HYV04450-01 & HYV04455-01	1
3	HYV04335-01	KIT, Seal - Electric Actuator	A/R
4	HYV04328	ACTUATOR, AMP Style, On/Off - Gripper, Crusher or Tipper Section	A/R
	HYV04320	ACTUATOR, DIN Style, On/Off - Gripper, Crusher or Tipper Section	A/R
	79280	HARNESS, Adapter, AMP to DIN	A/R
5	HYV04327	ACTUATOR, AMP Style, Proportional - In/Out or Up/Down Section	A/R
	HYV04321-01	ACTUATOR, DIN Style, Proportional - In/Out or Up/Down Section	A/R
	79461	HARNESS, Adapter, AMP to DIN - In/Out Section	A/R
	79462	HARNESS, Adapter, AMP to DIN - Up/Down Section	A/R
6	HYV04377	SECTION, End	1
7	HYV04429	KIT, Seal, Between Sections	A/R
8	HYV04330	KIT, Seal, Handle End	A/R
9	HYV04315	ASSEMBLY, Actuator - Handle End (Includes Items 1 & 8)	A/R
10	HYV04325	KIT, Stud (3 Section)	A/R
	HYV04329	KIT, Stud (4 Section)	A/R
	HYV04431	KIT, Stud (5 Section)	A/R
	HYV04464	ASSY, Sect, On/Off -Tipper, Grabber or Crusher. Used on Valves HYV04406-01, 04407-01, 04408-01, 04450-01, 04455-01 & 04459-01, Using Pump HYV01496 or HYV01461	A/R
	HYV04360	SPOOL - Used with section HYV04464 Only	
	HYV04465	ASSY, Sect, Proportional - In/Out or Up/Down, Used on Valves HYV04407-01 & HYV04455-1 , Using Pump HYV01496 or HYV01461	A/R
	HYV04365	SPOOL - Used with section HYV04465 Only	
	HYV04474	ASSY, Sect, Proportional - Up/Down Only, Used on Valve: HYV04459-01 Using Pump HYP01496 (Option: Pressure Limiting Up/Down)	A/R
	HYV04368	SPOOL - Used with section HYV04474 Only	
	HYV04406-01	ASSY, Valve - Complete (4 Sect) Used on Std/HD RH. Arms Using Pump HYV01496	
	HYV04407-01	ASSY, Valve - Complete (3 Sect) Used on Std/HD RH. Arms Using Pump HYV01496	
	HYV04408-01	ASSY, Valve - Complete (5 Sect) Used on Std/HD RH. Arms Using Pump HYV01496	
	HYV04450-01	ASSY, Valve - Complete (4 Sect) Used on Std/HD RH. Arms Using Pump HYV01461	
	HYV04455-01	ASSY, Valve - Complete (3 Sect) Used on Std/HD RH. Arms Using Pump HYV01461	
	HYV04459-01	ASSY, Valve - Complete (3 Sect) Used on Std/HD RH. Arms W/Press. Limiter on Up/Down Section, Using Pump HYV01496	