

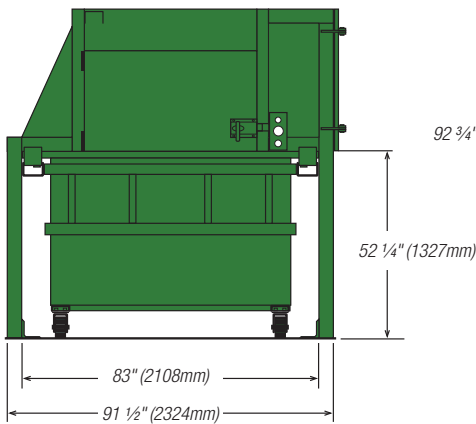
## Vert-I-Pack Triple Lock

✔ The mechanical door interlock prevents the door from being opened at all times except when the unit is in the proper feeding position. A second interlock prevents the unit from cycling (operating) when the door is in the open position. The third interlock prevents the unit from functioning when the container is not in the proper position.

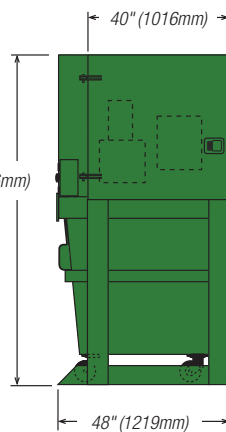


## Dimensions Untouchable VIP

FRONT VIEW



SIDE VIEW

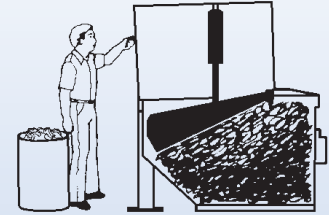


### Untouchable VIP dimensions

Feed height	52.25"	1327mm
Overall height	92.75"	2356mm
Overall width	91.5"	2324mm
Overall depth	48"	1219mm
Container weight	825 lbs.	375 kg
Complete assembly weight	3675 lbs.	1667 kg

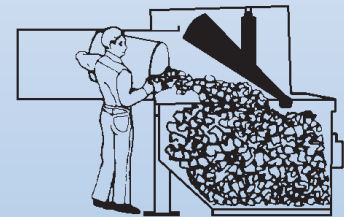
## Simple User Operation

### Step 1



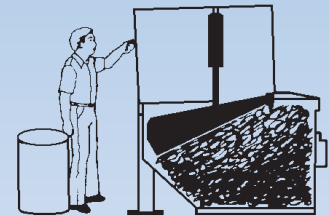
✔ The operator inserts the key and turns it to the "UP" position. When the ram moves to the up position the door can be opened.

### Step 2



✔ The large opening allows even a 30 gallon container to be emptied easily. The new waste material is dumped into the cavity left in the container by the previous ram position.

### Step 3



### ✔ Auto-Cycle is standard!

After feeding, the operator turns the key to the "pack" position and then removes the key. The ram will cycle automatically to the down position to compact and hold the waste material there until the next loading cycle.

More than 13 tons (11,793 kg) of crushing power forces the ram 18-inches (457mm) into the container.

*Note: Control sequence not applicable to VIP FL/3, which has load/pack controls.*

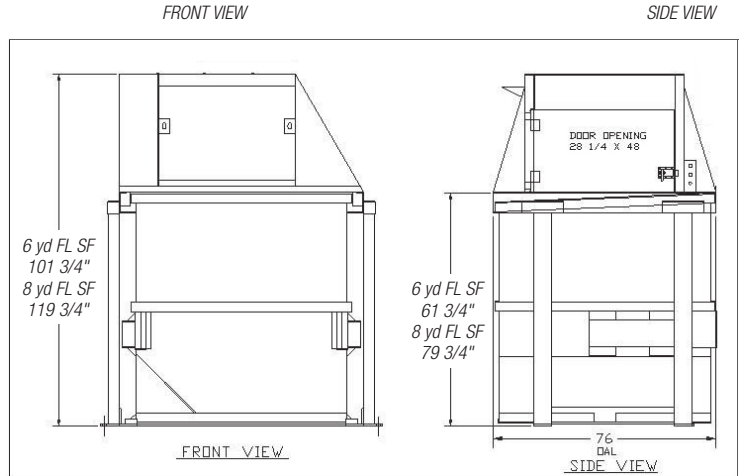
# Untouchable VIP™ and VIP FL/3 Self-Contained Compactors

## Dimensions and Specifications

Specifications		
<b>Charge Box Capacity</b>		
[Mfr. Rating]	0.72 cu yd	0.55 m <sup>3</sup>
[WASTEC Rating]	0.54 cu yd	0.41 m <sup>3</sup>
Clear Top Opening	23.5"L x 46"W	597mm x 1168mm
<b>Performance Characteristics:</b>		
Cycle Time	30 sec.	30 sec.
Total Normal Force	26,400 lbs.	11,975 kg
Total Maximum Force	30,200 lbs.	13,699 kg
<b>Electrical Equipment:</b>		
Electric Motor 3/60/230-460	3 hp	2.2 kW
Electric Control Voltage	120 VAC	120VAC
<b>Panel Box Assembly</b>		
UL® and CUL® Listed	Key Operated	120 VAC
All Circuits Fused	2-Button Station Start/Stop	
<b>Hydraulic Equipment:</b>		
Hydraulic Pump	3 gpm	11.4 L/min
Normal Pressure	15.3 psi	1.0 bar
Maximum Pressure	17.5 psi	1.2 bar
Hydraulic Cylinders (2) - Bore	4"	102mm
- Rod	2"	51mm

## Dimensions

### VIP FL/3



VIP FL/3 dimensions		
Feed height	46.375"	1178mm
Overall height	86.375"	2194mm
Overall width	96"	2438mm
Overall depth	60"	1524mm
Container weight	675 lbs.	306 kg
Complete assembly weight	3375 lbs.	1531 kg



Also available as Green Built®, featuring Solar and other environmentally friendly components.

Marathon's solar option is not UL and CUL Listed.

### Compactor Rental and Leasing Programs Available

For detailed specifications, recommendations, or free economic studies comparing various systems, contact Marathon Customer Care at **1-800-633-8974**.



Stationary and self-contained compactors.

### Authorized Dealer:

**MARATHON**  
A DOVER COMPANY

**Marathon Equipment Company**  
P.O. Box 1798  
Vernon, AL 35592-1798  
800.633.8974  
[www.marathonequipment.com](http://www.marathonequipment.com)  
NJPA Contract #060612-ESG



Pictures in this literature are illustrative only. Specifications are subject to change without notice in order to accommodate improvements to the equipment. Certified in compliance with ANSI standard Z245.2, all applicable OSHA Regulations, and certified under WASTEC's Stationary Compactor Certification Program. Products must be used with safe practice and in accordance with said regulations and standards.