

**Sanitary  
Equipment  
Co., Inc.**

# SALES PARTS SERVICE

**DO IT RIGHT THE FIRST TIME**

Committed to delivering equipment that meets immediate needs and exceeds expectations for years to come.

## INDUSTRY LEADING EQUIPMENT



**SHOP OEM PARTS AT [SANITARYEQUIPMENT.COM](http://SANITARYEQUIPMENT.COM)**

25 Industry Dr  
West Haven, CT 06516  
(203) 933-9599

1140 Turnpike St., Unit 3&4  
Stoughton, MA 02072  
(855) 373-7324

# RAMBO NOZZLE

High traction power, drill point and forward jet features provide maximum clog removal



The Difference Is Performance!

The Rambo Nozzle shares its name with a very "dangerous" warrior of the big screen. However, even the famous movie hero would be hard-pressed to emulate the success this nozzle has in removing its "enemies." The Rambo Nozzle combines the best characteristics of all penetrating nozzles into a maximum performance, maximum clog busting nozzle with its wedge-shaped design, drill point, and excellent thrust.

The Rambo Nozzle is sure to get you out of a jam at 2 am when flow needs to be restored, and clogs need to be eliminated. The Rambo Nozzle's unique benefit is that the drill point feature has three rear spraying jets allowing the nozzle to dissolve blockages from within. The Rambo can be configured with steel or titanium ceramic inserts. Drill point can be removed, and a standard M8 can be inserted in its place for .5" and up only.

## ADVANTAGES

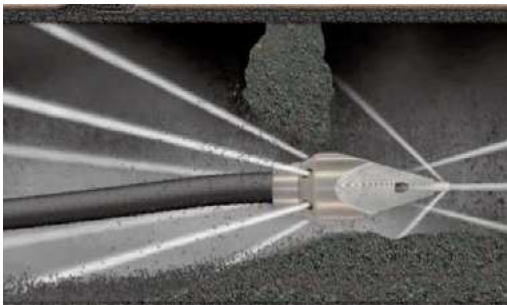
- Three Nozzles in One
- Maximum Penetration
- Replaceable Drill Point
- Replaceable Inserts
- Tier Two Nozzle (.75"+)

## APPLICATIONS

- **SANITARY, STORM**
- Total Blockages
- Roots, Grease, Ice, Stone, Sand, and Rags
- Small to Large Pipes



1" Rambo Nozzle



## KEG RAMBO NOZZLE

Product Shown Above	Part Number	Hose Size	Number of Inserts	Insert Size	Weight (pounds)	Dimensions	Pipe Size
A	100067-S	.25"	Factory	Drill	.1	1.8" x .9"	From 2"
B	100067A-S	.38"	Factory	Drill	.1	1.8" x .9"	From 2"
C	100066-S	.5"	Factory	Drill	.35	3.25" x 1.2"	From 3"
D	100065	.75"	5/3/1	M8	1.55	4.8" x 2.1"	From 3"
E	100063	1"	5/4/1	M8	4.75	6.7" x 3"	From 4"
F (not shown)	100064	1.25"	6/4/1	M8	5.35	7.8" x 3"	From 6"
G (not shown)	10068-C	1.5"	8/4/1	M8	5.35	7.8" x 3"	From 8"

Please indicate "-C" for titanium ceramic inserts or "-S" for steel inserts after each part number.

**Sanitary  
Equipment  
Co., Inc.**

# SALES PARTS SERVICE

**DO IT RIGHT THE FIRST TIME**

Committed to delivering equipment  
that meets immediate needs  
and exceeds expectations  
for years to come.

## INDUSTRY LEADING EQUIPMENT



**SHOP OEM PARTS AT [SANITARYEQUIPMENT.COM](http://SANITARYEQUIPMENT.COM)**

25 Industry Dr  
West Haven, CT 06516  
(203) 933-9599

1140 Turnpike St., Unit 3&4  
Stoughton, MA 02072  
(855) 373-7324